

Early Childhood Education and Care Department

Equitable Access to Cradle-to-Career Education

Elizabeth Groginsky, Cabinet Secretary



Early Childhood

Education & Care Department

Investing for tomorrow, **delivering today**



Agenda

- Early Childhood Landscape
- Agency Overview
- Fiscal Year (FY) 2022
Budget Request
- Supporting Children and
Families During COVID





EARLY CHILDHOOD LANDSCAPE IN NEW MEXICO

Early Childhood Professionals

Program Type	Approximate Numbers
Child Care	8,958
NM PreK (<i>public and private</i>)	1,362
Home Visitors	270
Head Start and Early Head Start	2,210
Early Intervention Professionals	808
Consultants and Coaches	54
Total Early Childhood Professionals	13,662



NEW MEXICO

Early Childhood

Education & Care Department

Investing for tomorrow, delivering today

This data is captured from internal and external data sources

Families and Children

Total Families in New Mexico	162,623
Families Living at or Below 200 percent of Federal Poverty Level (FPL)	53,665 (33%)

Children Birth to Age 5	Living at or Below 100 Percent of FPL
Hispanic: 72,793	31.3%
Native American: 13,048	40.3%
Black/African-American: 1,063	37.1%
Asian: 1,310	Not available
Caucasian: 28,640	17.2%
Two or More Races: 9,211	32.3%
Other: 6,575	27.4%
TOTAL: 116,978	28.9%



NEW MEXICO

Early Childhood

Education & Care Department

Sources: US Census ACS, 1 year data from 2017-2019, Tables B01001 (B-I) and B17001 (B)
Sources: US Census ACS, 1 year data from 2019, Table S1702; and PRB analysis of ACS data

Annual Births

Race and Ethnicity	Percent
Hispanic: 12,914	56.2%
Native American: 2,766	12.0%
Black/African-American: 477	2.0%
Asian: 525	2.3%
Caucasian: 6,232	27.1%
Other: 52	0.2%
TOTAL: 22,966	

Medicaid-Funded Births per Year:	72%*
---	-------------

Source: [NM-IBIS - Query Result - New Mexico Birth Data - Count \(state.nm.us\)](https://state.nm.us/nm-ibis/)

*2015 Data



NEW MEXICO

Early Childhood

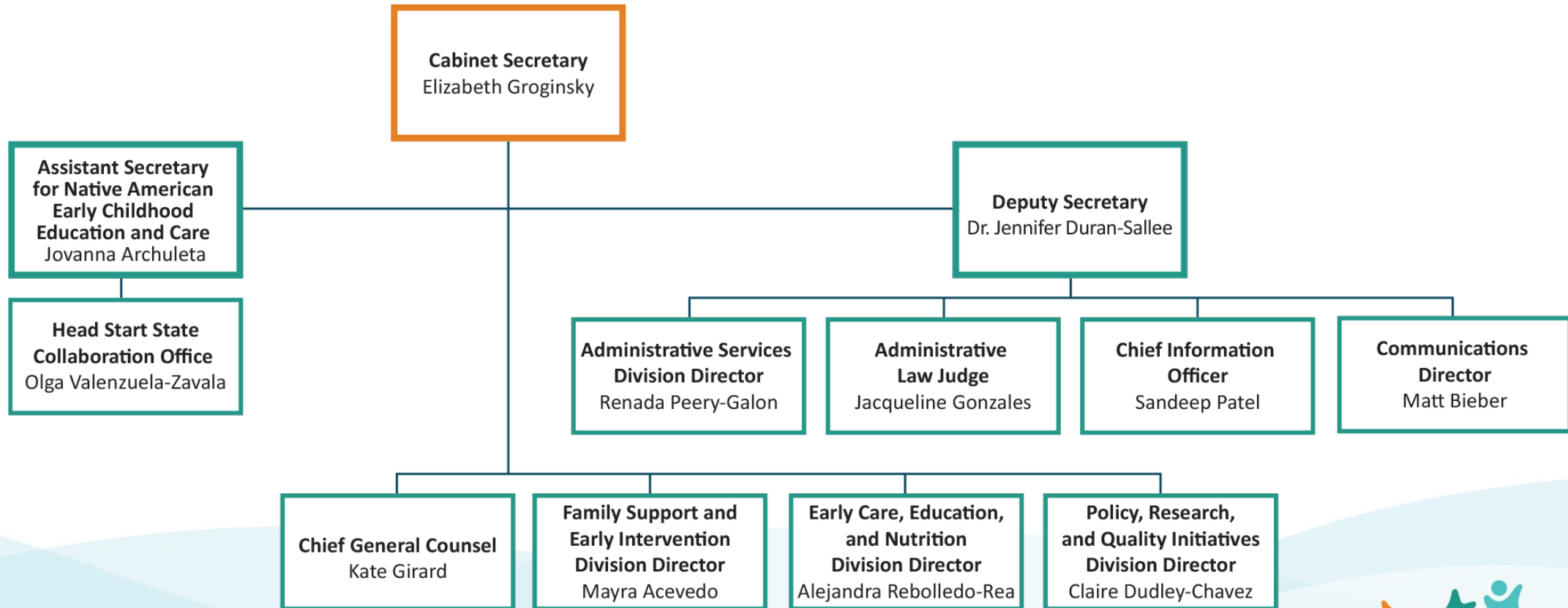
Education & Care Department

Investing for tomorrow, delivering today



AGENCY OVERVIEW AND PRIORITIES

Organizational Chart – Top Level



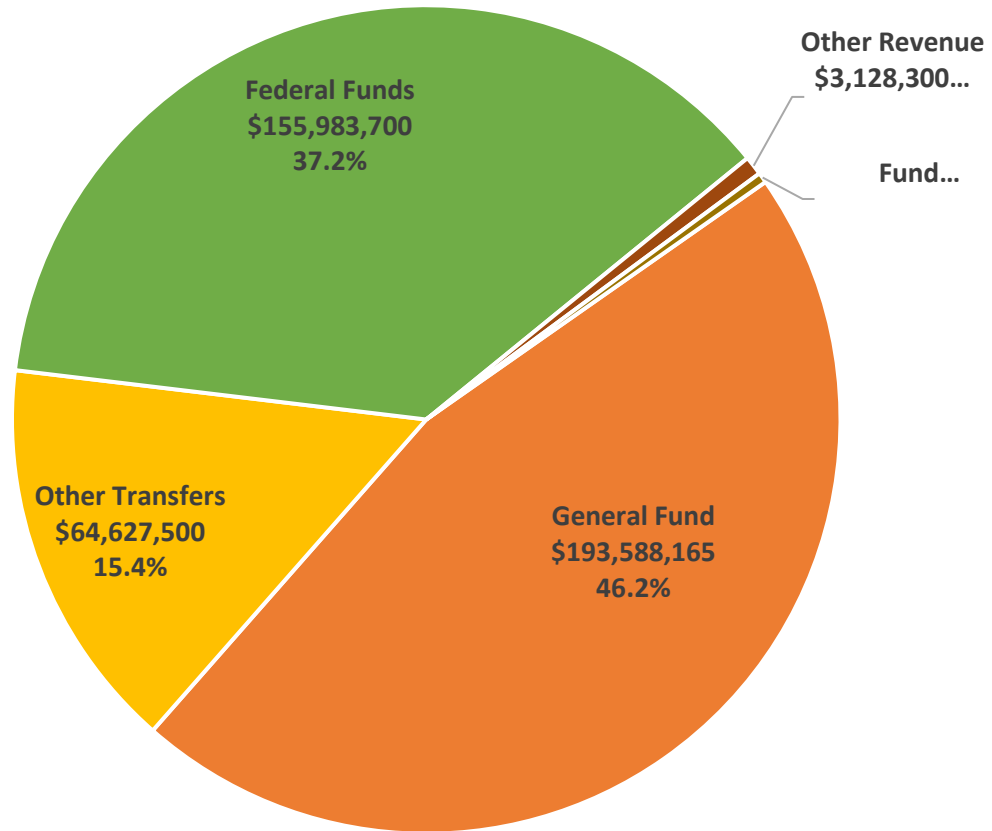
NEW MEXICO

Early Childhood

Education & Care Department

Investing for tomorrow, delivering today

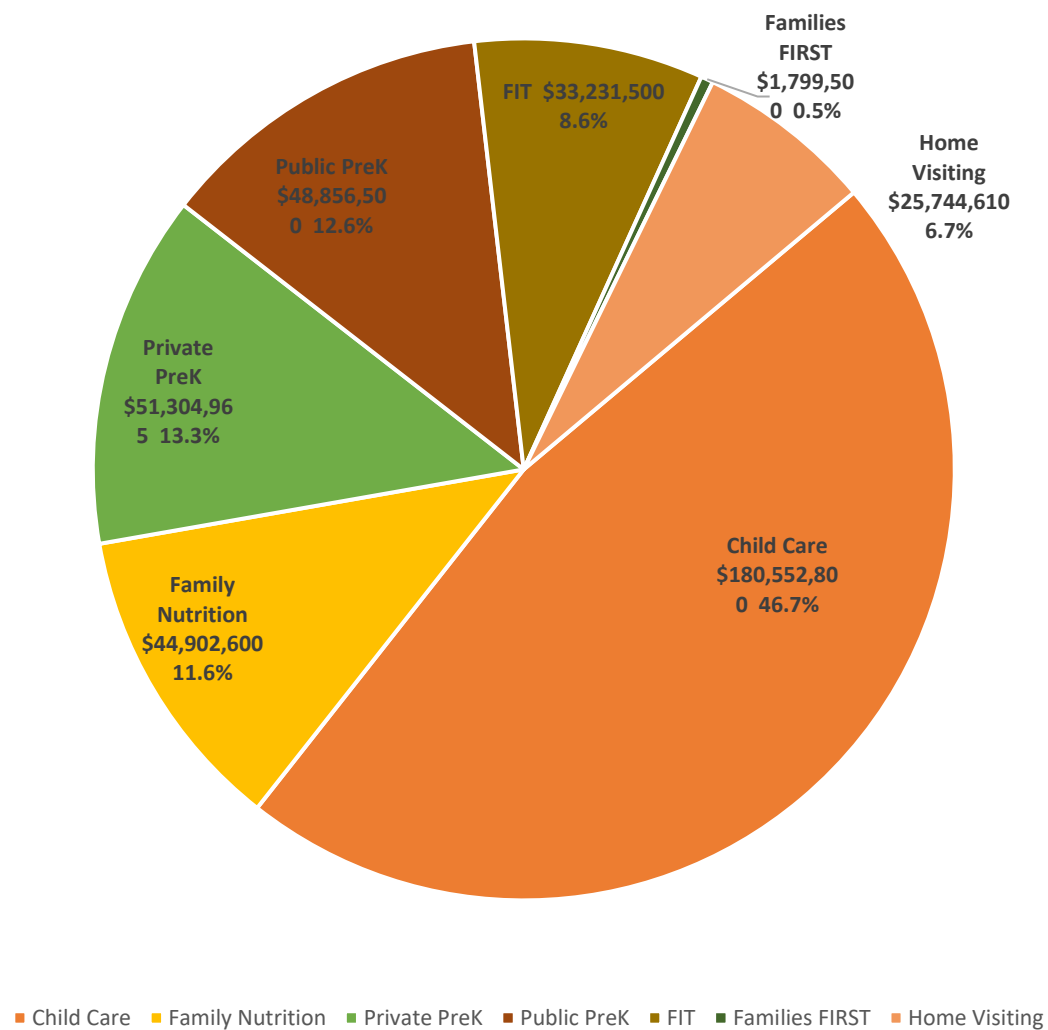
FY21 Operating Budget by Source



General Fund Other Transfers Federal Funds Other Revenue Fund Balance

ECECD Funding by Source

FY21 Operating Budget by ECECD Division/Program



ECECD Budget for FY 2021 = \$419+ million

Over 50 percent of the Department's budget is federally funded, including TANF and Medicaid

81 percent of ECECD's FY21 budget supports direct services



Strategic Priorities

Grow	Grow Investments
Advance	Advance a Diverse, Well-Compensated, and Credentialed Workforce
Increase	Increase Quality and Access
Achieve	Achieve Equity
Enhance	Enhance Authentic Collaboration



NEW MEXICO

Early Childhood

Education & Care Department

Investing for tomorrow, **delivering today**



Tribal Collaboration

- Assistant Secretary Archuleta is leading a Department-wide effort to build and strengthen relationships with all of New Mexico's tribal communities.
 - ◆ Established team of ECECD tribal liaisons from each division
 - ◆ Hosts bi-monthly engagements with tribal leaders
 - ◆ Enhanced partnership between Head Start Collaboration Office and tribal communities
 - ◆ Distributed food and infant wellness packages during pandemic
 - ◆ Supported recent Government-to-Government meeting
 - ◆ Invested in culturally responsive curricula development workshop



NEW MEXICO

Early Childhood

Education & Care Department

Investing for tomorrow, **delivering today**



Equity Council

- Internal effort - convening in Dec. 2020
- Define our approach to equity and equitable community engagement
- Develop process to create equity councils statewide through an Equity Agenda Action Plan



NEW MEXICO

Early Childhood

Education & Care Department

Investing for tomorrow, **delivering today**



FY22 AGENCY BUDGET REQUEST

FY22 Budget Priorities

- Maintain and expand access to NM PreK to advance the Administration's universal PreK goal
- Advance pay equity in NM PreK
- Increase access to home visiting
- Connect families to outcome-focused interventions
- Invest in infrastructure and data integration





Community-Based Home Visiting

	FY 2020	FY 2021	FY 2022
Budget	\$22,771,070	\$25,482,500	\$26,005,437
Families Served	6,154	6,709 (projected)	7,280 (projected)

Highlights

- Established a public-private working group to plan expansion of Centennial Home Visiting (plan will be completed in April)
- Evidence-based models currently offered in nine of the state's home visiting organizations



NEW MEXICO

Early Childhood

Education & Care Department

Investing for tomorrow, delivering today



Family, Infant and Toddler (FIT) Program

	FY 2020	FY 2021	FY 2022
Budget	\$27,853,281	\$33,231,500	\$34,050,100
Children Served	14,994	15,542 (projected)	16,319 (projected)

Highlights

- All FIT families can access tele-health and in-person services
- In the first quarter of FY21, 53 percent of the 1,549 children referred were under age one



NEW MEXICO

Early Childhood

Education & Care Department

Investing for tomorrow, delivering today



Families FIRST

	FY 2020	FY 2021	FY 2022
Budget	\$2,100,000	\$1,799,500	\$3,284,275
Families Served	1,727	1,627 (projected)	2,127 (projected)

Highlights

- Families FIRST Nurses have provided nearly 900 hours of COVID-19 testing support across public health offices since July 1
- Initiated the process for nurses to provide the Nurse Family Partnership home visiting model



NEW MEXICO

Early Childhood

Education & Care Department

Investing for tomorrow, delivering today

Child Care Services

	FY 2020	FY 2021	FY 2022
Budget	\$148,519,700	\$180,552,800	\$180,552,800
Children Served	22,173 (actual)	26,649 (projected)	26,649 (projected)

Highlights

- Emergency regulations: expanded eligibility and reduced provider, client, and administrative burden
- Maintained services to support vulnerable families, children and essential workers during health emergency
- Developed comprehensive COVID-19 Safe Practices, protocols and supports
- Waived parent copayments and distributed differential payments to providers to alleviate some financial constraints



NEW MEXICO

Early Childhood

Education & Care Department

Investing for tomorrow, delivering today

New Mexico PreK

Public Schools PreK	FY 2020	FY 2021	FY 2022
Budget	\$46,299,000	\$48,856,500	\$47,021,800
Children Served	7,072	7,247	7,247

Community-Based PreK	FY 2020	FY 2021	FY 2022
Budget	\$45,994,800	\$51,304,965	\$53,282,675
Children Served	5,411	6,171	6,486

Highlights

- Launched Joint Application for community-based and public schools PreK services
- Enhanced collaboration with the Head Start community
- Implemented UPSTART in NM PreK, tribal and Head Start programs



NEW MEXICO

Early Childhood

Education & Care Department

Investing for tomorrow, delivering today

Workforce Development

	FY 2020	FY 2021	FY 2022
Budget	\$4,028,900	\$6,502,900	\$9,502,900
Wage Supplement	230 Participants	750 Participants	1,000 Participants
Scholarships	1,191 scholars	1,911 scholars	2,000 scholars

Highlights

- Scholarships now available to all early childhood professionals
- Provided wage incentives to more than 3,000 child care professionals through federal CARES Act funding
- Launched Quorum, an online professional development platform 24/7 with 120 hours of Spanish courses; 1,587 professionals participating
- Funded 30 professionals to participate in CLASS Train-the-Trainer



NEW MEXICO


Early Childhood

Education & Care Department

Investing for tomorrow, delivering today

A photograph of a man with a beard and dark hair, wearing a maroon button-down shirt, holding a young girl with dark hair and bangs. The girl is wearing a yellow and white floral dress. They are standing outdoors in front of a background of green and yellow trees, possibly in a park or natural area. The lighting is warm, suggesting late afternoon or early morning. The text "SUPPORTING CHILDREN AND FAMILIES DURING COVID" is overlaid in white, bold, sans-serif font across the middle of the image. Below the text is a solid orange horizontal bar.

SUPPORTING CHILDREN AND FAMILIES DURING COVID



Supporting New Mexico's Early Childhood Community During the Pandemic

- ◆ Health insurance for early childhood professionals who contract COVID-19
- ◆ Wage incentive program for early childhood professionals
- ◆ Stabilization and recovery grants for businesses
- ◆ Telehealth
- ◆ Differential payments for every child served
- ◆ Personal protective equipment (PPE)
- ◆ Food deliveries and infant wellness packages for tribal communities
- ◆ Detailed health and safety guidance
- ◆ Partnership with Public Education Department
- ◆ Weekly conference call with early childhood community

Supporting New Mexico Families During the Pandemic

- ◆ Offered free child care for essential workers
- ◆ Waived parent copayments
- ◆ Launched a summer PreK Jumpstart program
- ◆ Expanded eligibility for child care assistance to include job search, telework, online coursework, and graduate/postgraduate education
- ◆ Created online resources to support home learning
- ◆ Created, implemented and responded to a statewide family survey on needs during remote and hybrid learning
- ◆ Initiated a Family, Friend and Neighbor program

For more information, please contact
Cabinet Secretary Elizabeth Groginsky

505-231-2997

Elizabeth.Groginsky@state.nm.us

nmeccd.org



NEW MEXICO

Early Childhood

Education & Care Department

Investing for tomorrow, **delivering today**

