



Preschool Development Grant Birth – 5 (PDG B-5)

7th Annual KIDS COUNT Conference

June 26, 2019





Objectives for today:

1. Learn about the activities being conducted under the Preschool Development Grant Birth–5 (PDGB–5) to build a quality early learning system in New Mexico.
2. Learn how data and information will be collected through the Early Childhood Integrated Data System (ECIDS); community and stakeholder engagement; a statewide survey; as well as national research and research conducted with other states.
3. Learn how to contribute to statewide needs assessment and 3-year early learning strategic plan.
4. Learn about the statewide early learning media campaign and expansion on the resource and referral system

Defining NM's Early Learning System

Early Learning NM System					
Ages					
Prenatal	Birth to One	One	Two	Three	Four to Kindergarten Entry
Home Visiting					
	IDEA Part C Early Intervention – NM FIT Program			IDEA Part B EC Special Education	
	Child Care				
Early Head Start				Head Start	
				Early PreK	NM PreK



NM's PDG B-5 Vision: *Each and every child, prenatal to age five, and their families in New Mexico will have equitable access to quality early learning opportunities to support their development, health and well-being ensuring they are ready to succeed in kindergarten and beyond.*

Goals

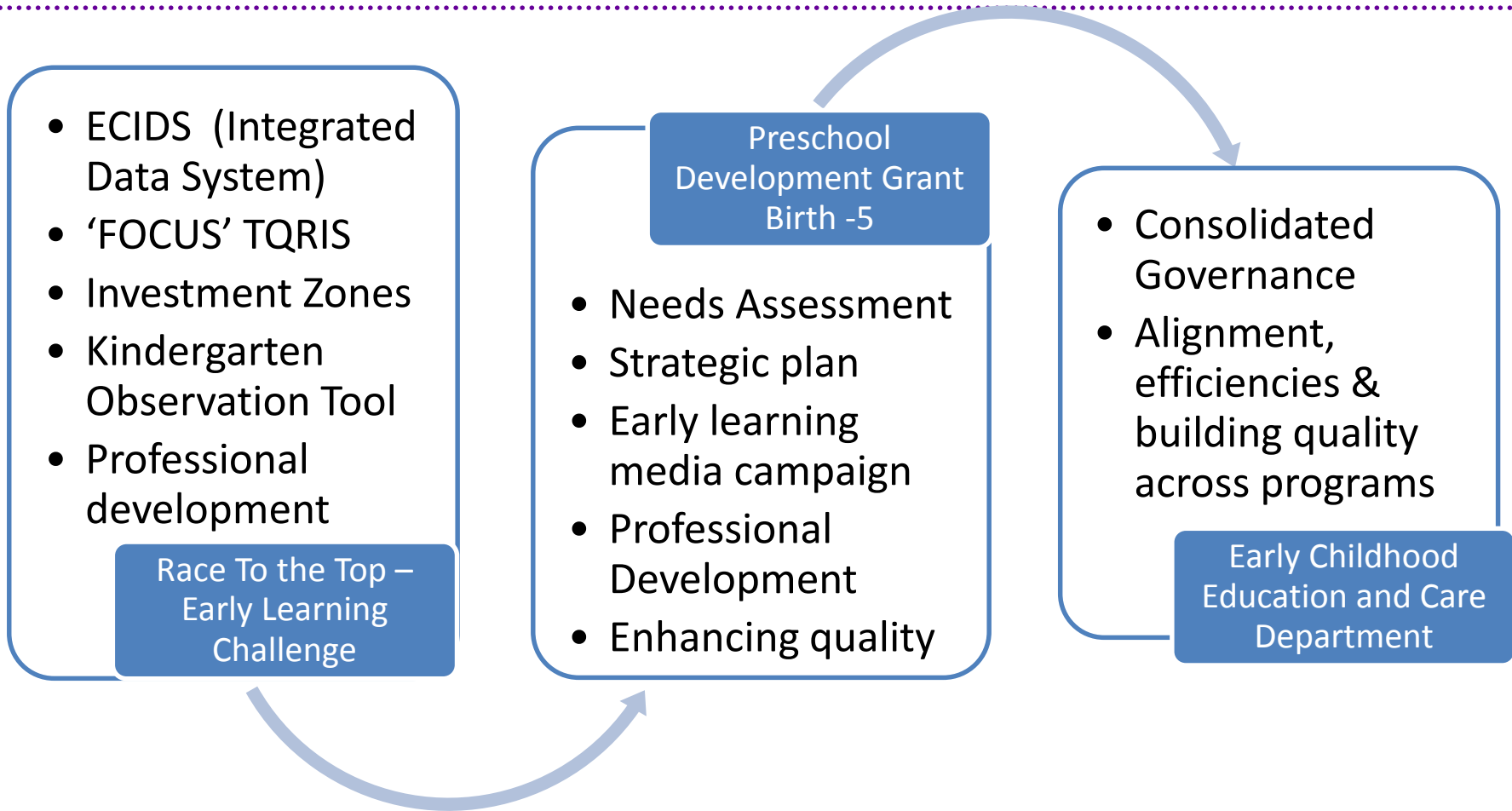
- 1. Collaboration and Coordination.** Early learning stakeholders partner at all levels to achieve a coordinated, aligned, efficient, & accountable statewide early learning system
- 2. Equitable Access.** Parents have knowledge and access to community resources and comprehensive early learning services
- 3. Quality.** Children are ready to succeed in kindergarten and beyond



Background (*stars are aligning*)

- **\$37.5 Million Race To Top – Early Childhood Challenge Grant** (Jan 2013 - Dec 2017)
- Shared governance under **Early Learning New Mexico** www.earlylearningnm.org between CYFD, PED and DOH
- Awarded \$5.4 Million **Preschool Development Grant Birth - 5** (final award 03/08/19)
- **SB22** signed in law by Governor Lujan Grisham on 03/14/19 creating the **Early Childhood Education & Care Department**

earlylearning NEW MEXICO



PDG B-5 Alignment and opportunities:

- **Early Childhood Education and Care Department**
 - PDG B-5 Needs Assessment research and data will inform the transition planning for the ECECD
 - PDG B-5 3-Year Strategic Plan will provide a strategic direction for the ECECD



Alignment and Opportunities:

- **Pritzker Children's Initiative** \$100K grant award
 - 9 month grant to develop an infant-toddler policy agenda
 - Will work with PDG B-5 team to ensure alignment and avoid duplication
- **Title V Maternal Child Health - Needs Assessment**
 - Working collaboratively w/ Public Health – Family Health Bureau
- **Maternal Infant Early Childhood Home Visiting (MIECHV) Needs Assessment** – due Oct. 2020



PDG B-5 Activity Areas:

1. Conduct a statewide early learning '**Needs Assessment**'
2. Develop a 3-year early learning '**strategic plan**'
3. Maximizing Parent Knowledge & Choice - Develop a **multimedia early learning campaign** and expanded **Resource and Referral system**
4. Sharing Best Practices - Develop and provide a variety of **professional development** and **video exemplars**
5. Improving overall **quality of early learning services**

earlylearning

NEW MEXICO

NM Preschool Development Grant Birth – 5 Timeline

Initial Planning

- Budget
- Procurement
- Staffing
- Kickoff – Stakeholder input

1. Needs Assessment:

- Vendor award & Contract
- Community Forums
- Targeted Stakeholder Forums
- Statewide survey

2. Strategic Plan:

- ELAC & Stakeholder input
- Publish & distribute plan

- National Research + Other States
- Early Childhood Integrated Data System (ECIDS)

3. Parent Knowledge and Choice - Media Campaign / Expand Resource & Referral

4. Sharing Best Practices - Professional Development

5. Improving quality

Mar

Apr

May

Jun

Jul

Aug

Sep

Oct

Nov

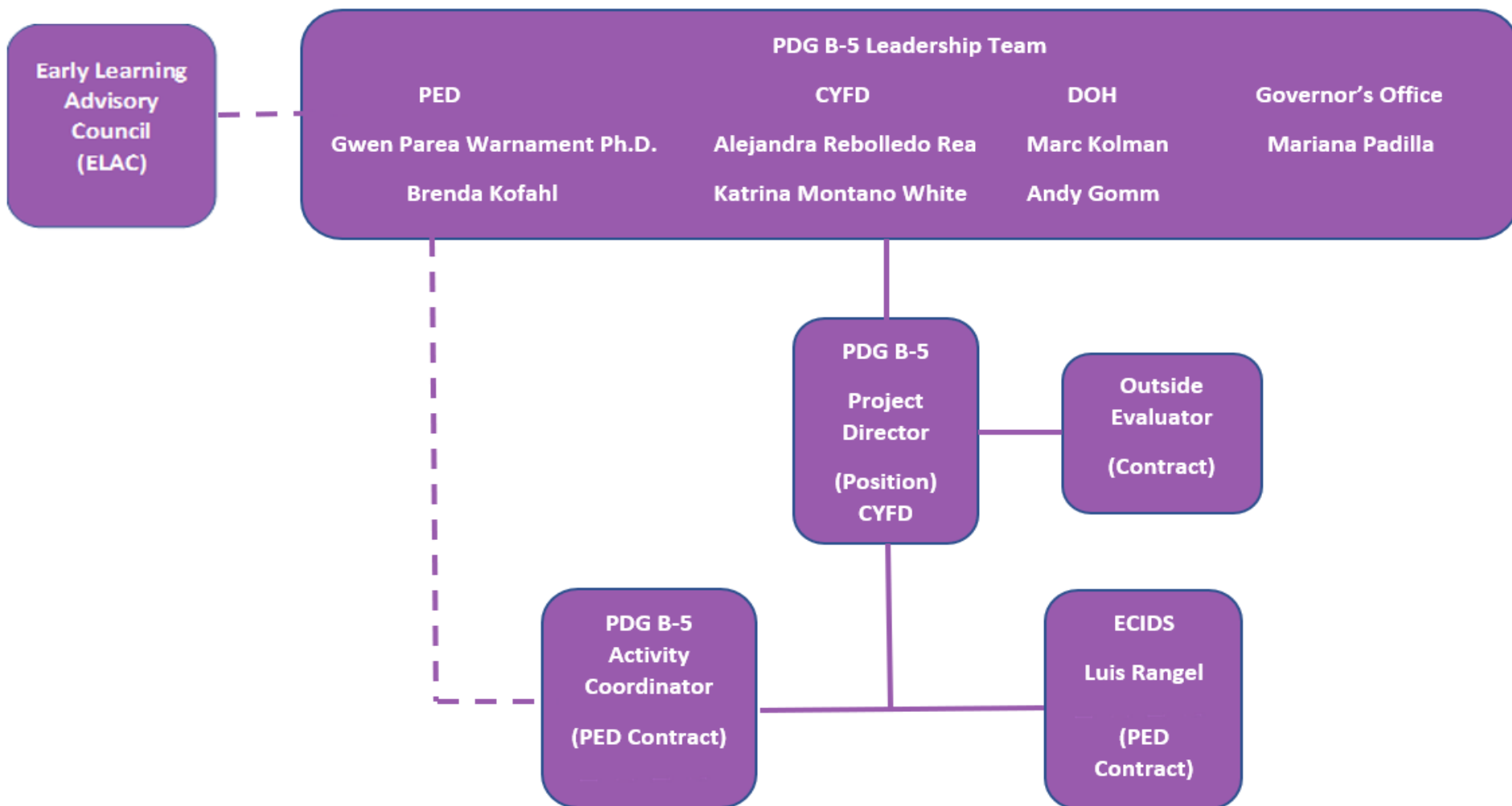
Dec

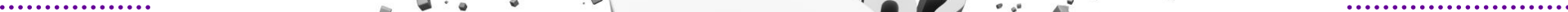
Jan

Feb

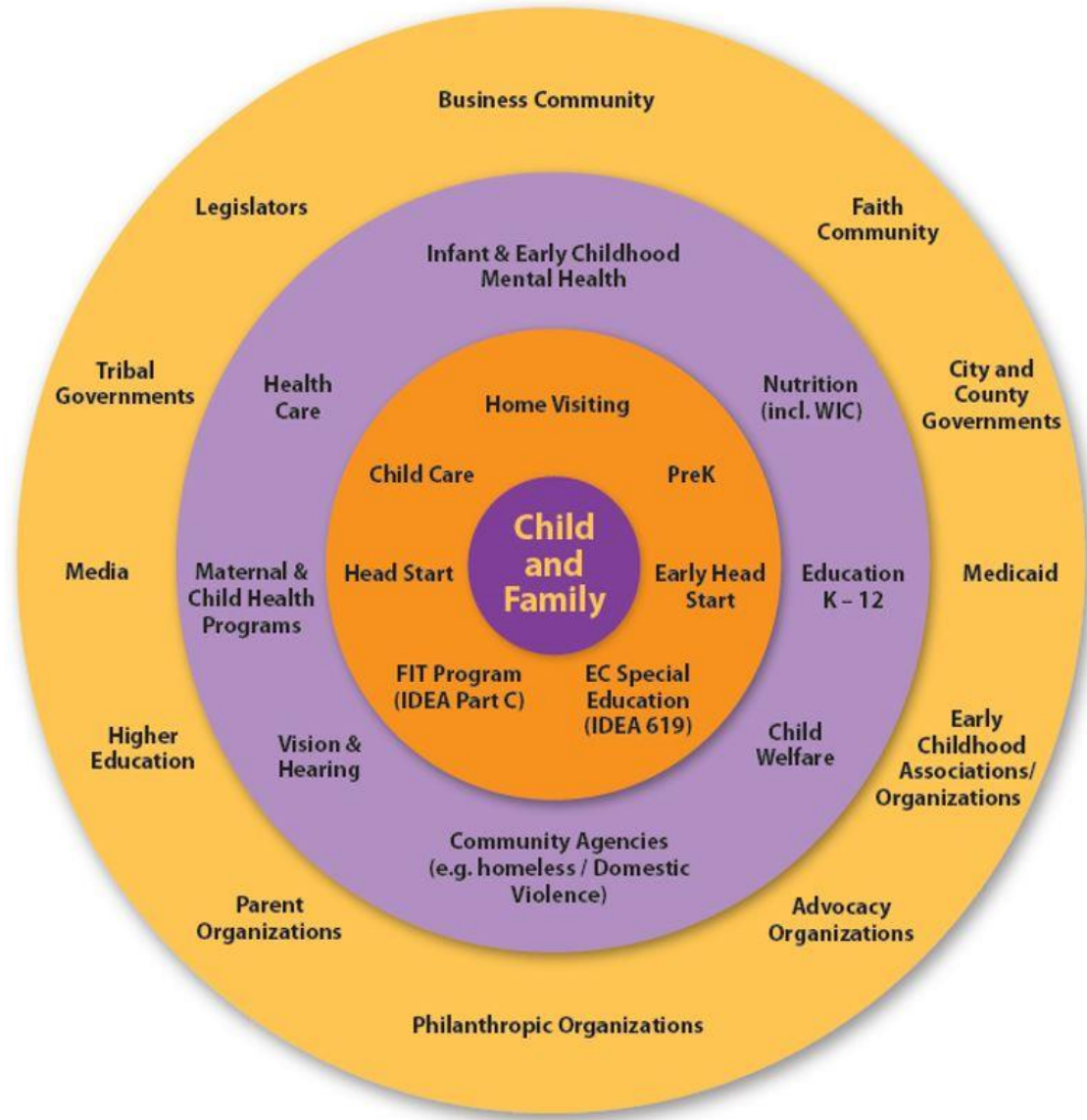
earlylearning

NEW MEXICO





Engaging with stakeholders is key



Early Learning Needs Assessment:

- 12+ Community Forums / conversations statewide
- Focus groups with vulnerable and underserved populations and around focus areas (workforce, funding, etc.). Particular engagement with tribal communities.
- Statewide Early Learning survey.
- Early Childhood Integrated Data System (ECIDS)
- National research and research with other states.

ECIDS update:

- ECIDS includes extract from Child Care, FIT Program, home visiting; PreK; Preschool Special Ed; KOT
- Assigns a Unique Id based on matching algorithm
- Deidentified data resides in ECIDS data warehouse
- 7 years of data with regular additional data extracts.
- Data is currently being validated
- Proposed outreach & expansion to Head Start and Tribes
- Data dashboard and governance for requesting data is being developed

Underserved populations:	Vulnerable populations
<ul style="list-style-type: none"> • Rural communities; • Frontier Communities; • Native American children. 	<ul style="list-style-type: none"> • Low income/poverty; • Teen Parents; • Dual Language Learners; • Child Welfare; • Homeless children / families; • Developmental Delays and Disabilities; • Children with Special Health Care Needs (CSHCN); • Infant & Early Childhood Mental Health; • NICU; • Immigrant Families; • Prenatal/Current Drug Use by Parents; Grandparents Raising Children/Kinship Care.

- *What input do you have regarding strategies for early learning community forums?*
- *What input do you have regarding strategies for the early learning statewide survey?*
- *What input do you have about strategies to engage vulnerable or underserved populations?*
- *How do you see you / your agency engaging in the early learning needs assessment and strategic plan?*

- Statewide Media campaign:
 - Positive campaign focused on brain development / brain building and the idea that families support their child's learning every interactions – reading, play, talking (serve and return) and quality early learning opportunities make a lifetime of difference. Maybe in the child's voice...
 - Multi-media to include: video, web, social media, radio, TV, etc.
- Expansion of the resource and referral system to allow families to search online (and toll-free) for any early learning program in their community by zip code / address

For more information or to get involved:

- www.earlylearningnm.org/pdg-b-5
- Andy Gomm andrew.gomm@state.nm.us
505.476.8975
- Alejandra Rebolledo Rea
alejandra.rebolledo@state.nm.us
505.827.7499

¡Vámonos!

