

# Community Schools

A Collective Response to Trauma in  
Our Schools and Communities



# What do schools have to do with ACES?



**1. Trauma impacts schools**

**2. Schools can impact trauma**





**What is a way that schools can mitigate ACEs?**



**What is a way that schools can exacerbate ACEs?**

# Community Schools

A comprehensive approach  
to trauma and ACEs







**Physical & Behavioral  
Health Programs**



**Tutoring & Mentoring  
Programs**



**Academic  
Support  
Programs**



**Nutrition  
Programs**



**Family Engagement**



**On-site  
Food Bank and  
Food Programs**



**Enrichment  
Programs**



**Highly Qualified  
Teachers**



**Strategic  
Attendance  
Programs**



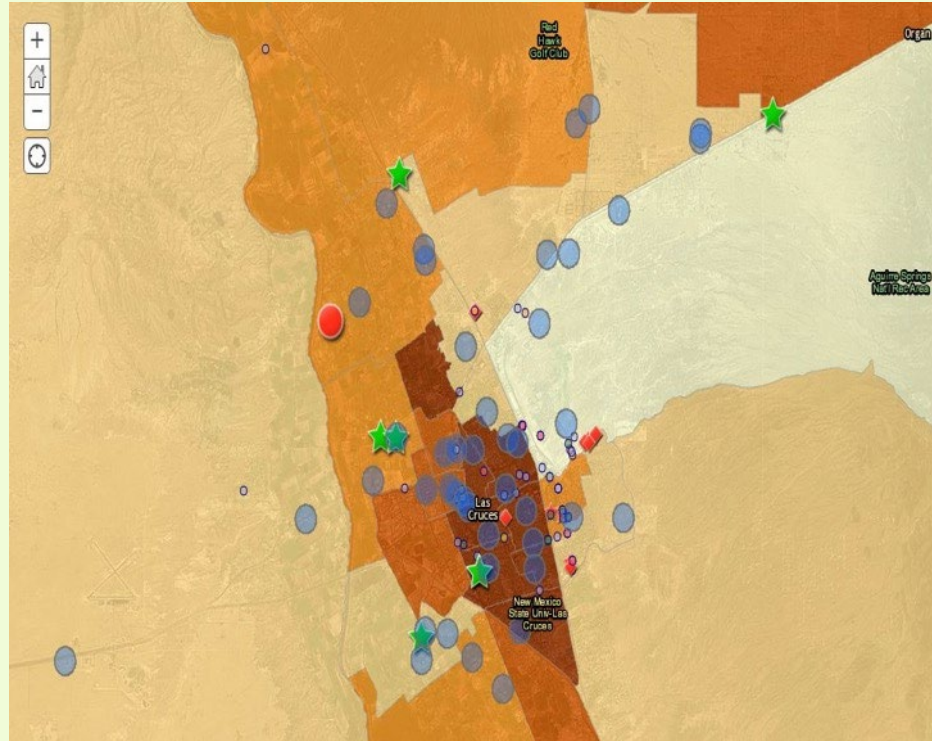
## 6 Essential Strategies for Community Schools



## 4 Mechanisms to Implement Community School Strategies



# Selecting a Model In Las Cruces Lynn Community Middle School





# Launching Community School Process Ribbon Cutting at Lynn Middle School





Student Survey

Staff Survey

Family  
Survey

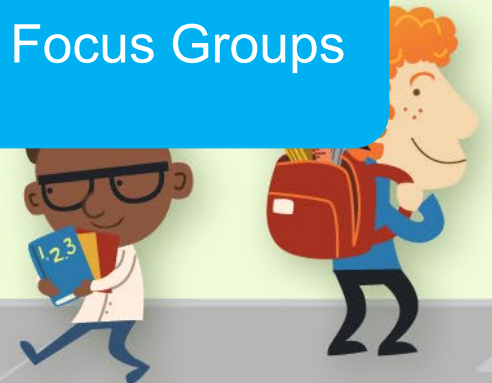
Community Canvassing

Family “Cookie  
Chats” and Phone  
Calls

Staff Focus Groups  
and Interviews

Student Focus Groups

**Community  
Priorities**



document (if you need help accessing this google doc, please call 410-236-7978)

<https://docs.google.com/.../1jLySvNOZgEa7Ud87lekMv5-tnfr.../edit>



## LYNN COMMUNITY MIDDLE SCHOOL

Inspiring Cougars Today to Create a Better Tomorrow

### DRAFT COMMUNITY SCHOOL STRATEGIC PLAN

#### BACKGROUND

In January 2017, Lynn initiated the community school strategy. The first step of the community school process is a deep community assessment.

Lynn surveyed over 450 students, over 300 parents, and all staff. The surveys addressed school governance, community assets, needs of students and families, curriculum and instruction, school discipline, family engagement, and more.

In addition to surveys, over 800 stakeholders were involved in subsequent focus groups and interviews. Over 50 Lynn stakeholders spent over 350 hours developing and implementing



DOCS.GOOGLE.COM

### Lynn Strategic Plan

DRAFT COMMUNITY SCHOOL STRATEGIC PLAN BACKGROUND In...

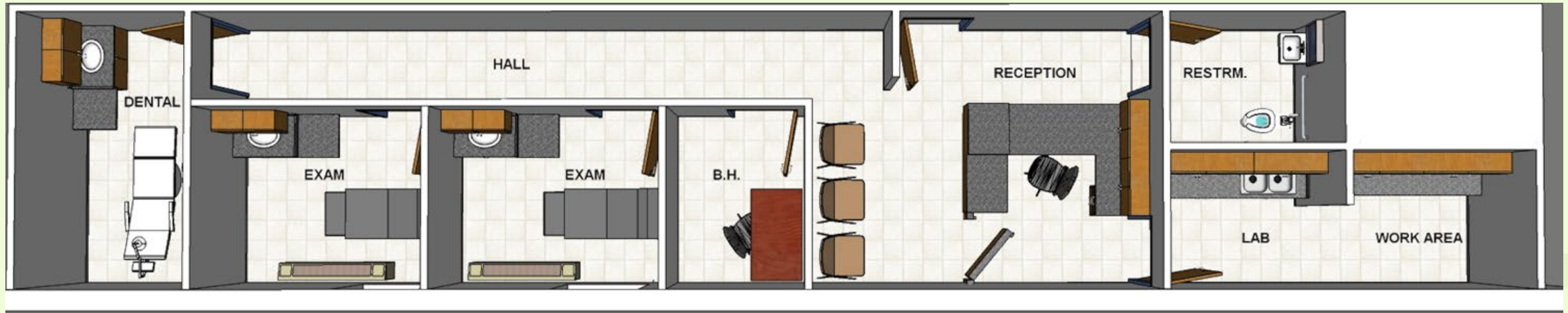


# Community Schools Respond to Trauma in 3 Ways

- 1. Promote wrap-around services and a variety of partnerships that connect students and communities to resources and provide case management to navigate fractured systems of support
- 2. Promote a restorative and trauma-informed approach to school climate
- 3. Mobilize school and community resources to remove the conditions that create and perpetuate trauma



# Wrap-around services and Community Partnerships



Mental, Physical, Dental  
Health





# After-School Programming





# Food Bank/Resource Fair



# Family Center





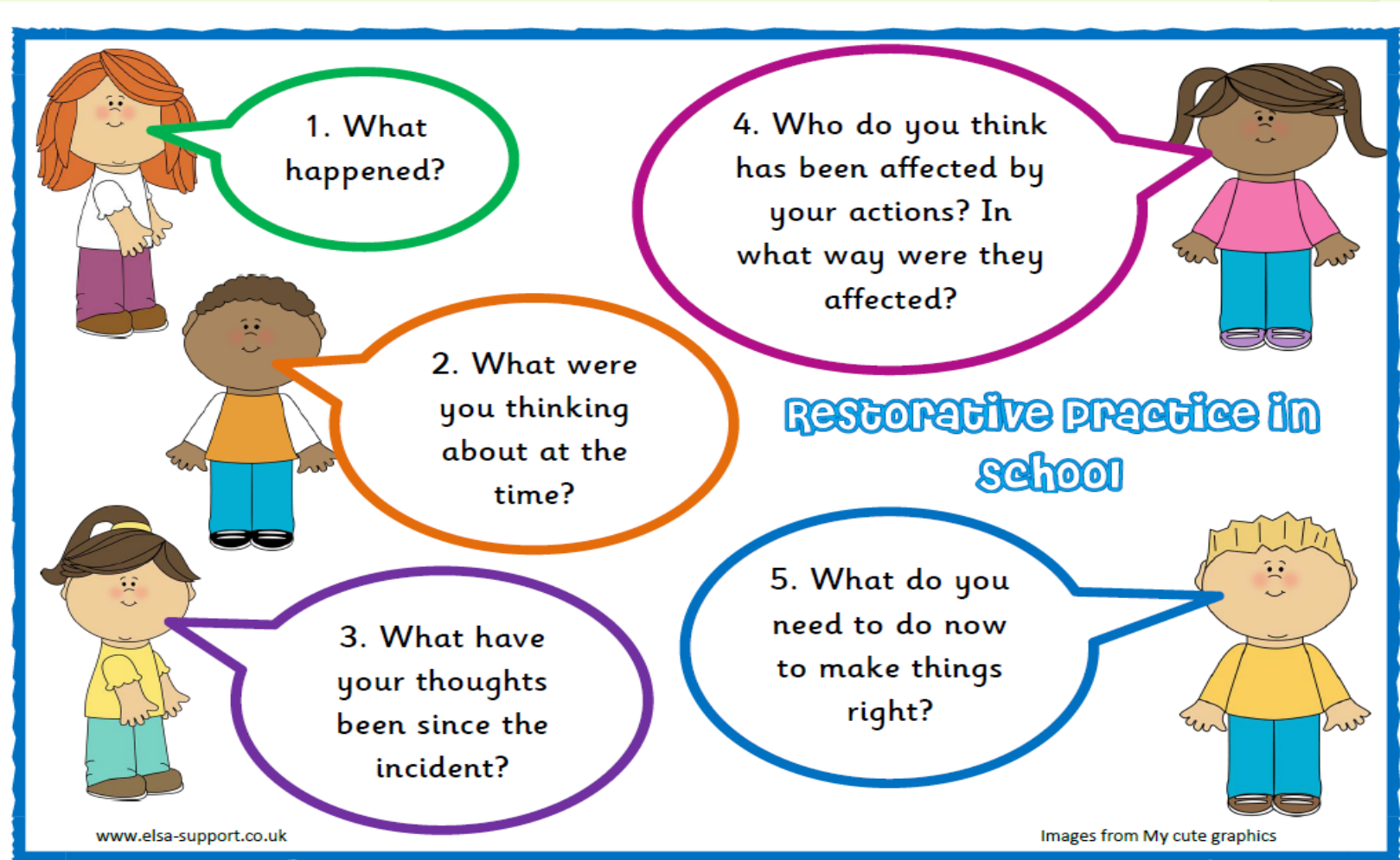
# OTHER PARTNERSHIPS

- JARC Case Management
- Mentorships: STARS; HAZLO; MARIPOSA
- Memorial Medical Center Residency





# Restorative and Trauma-Informed Climate



"Restorative  
Practices **in**  
keep students **in** school,  
**learning**, rather than  
removing them for  
suspension or expulsion..."

Serious Infractions  
at Lynn down from  
73 to 29 from  
August-Nov 2017 to  
August-November  
2018



## **The 12 Tools**

Breathing Tool  
Quiet/Safe Place Tool  
Listening Tool  
Empathy Tool  
Personal Space Tool  
Using Our Words Tool  
Garbage Can Tool  
Taking Time Tool  
Please & Thank You Tool  
Apology & Forgiveness Tool  
Patience Tool  
Courage Tool



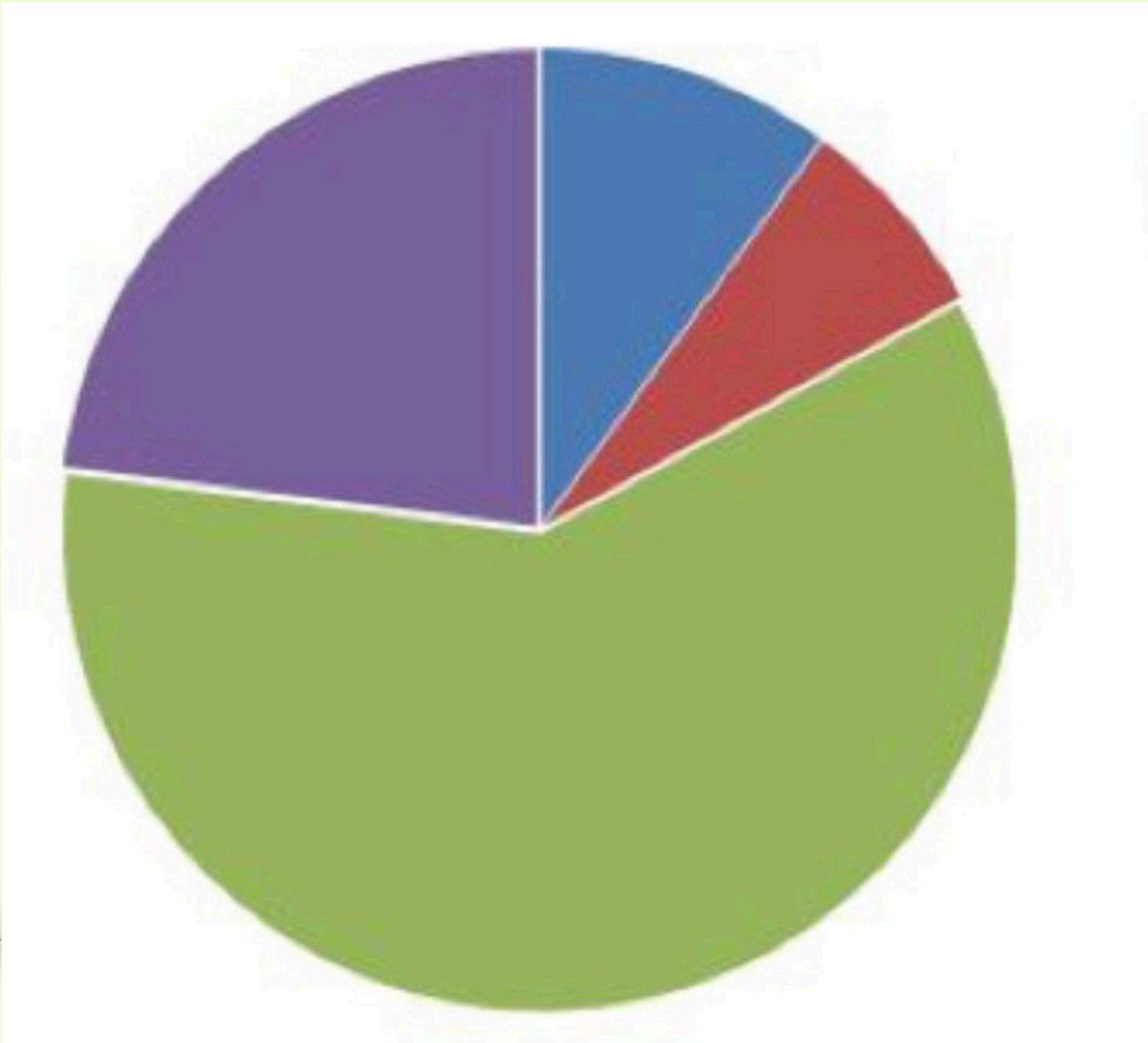
# Community Mobilization

- What are the systemic social issues that cause/perpetuate trauma? How can schools take on these issues?
- Benjamin Franklin High School
- ENLACE/CFSNM/Emp. Congress









Teacher

Other In-School  
Factors (class-  
size, curriculum)

Out of School  
Factors  
(demographics)

Unexplained  
Variance



# Proven results of community schools

National studies have found that strong community schools have:

- **higher** student attendance
- **higher** graduation rates and lower dropout rates
- **higher** reading and math scores
- **improved** school climate, including teacher morale and student behavior
- **greater** parent engagement
- **lower rates** of neighborhood crime and violence.



# Organizing Community Schools

- What's stopping every school from becoming a community school?





# Organizing Community Schools

- **1. Elevator Pitch for you school**
- **2. Designing Needs and Asset Assessment**
- **3. Potential Programs and Services**



# Community Schools in the Face of Yazzie

- Las Cruces Partnership for Community Schools
- Kentucky's FRYSCs

