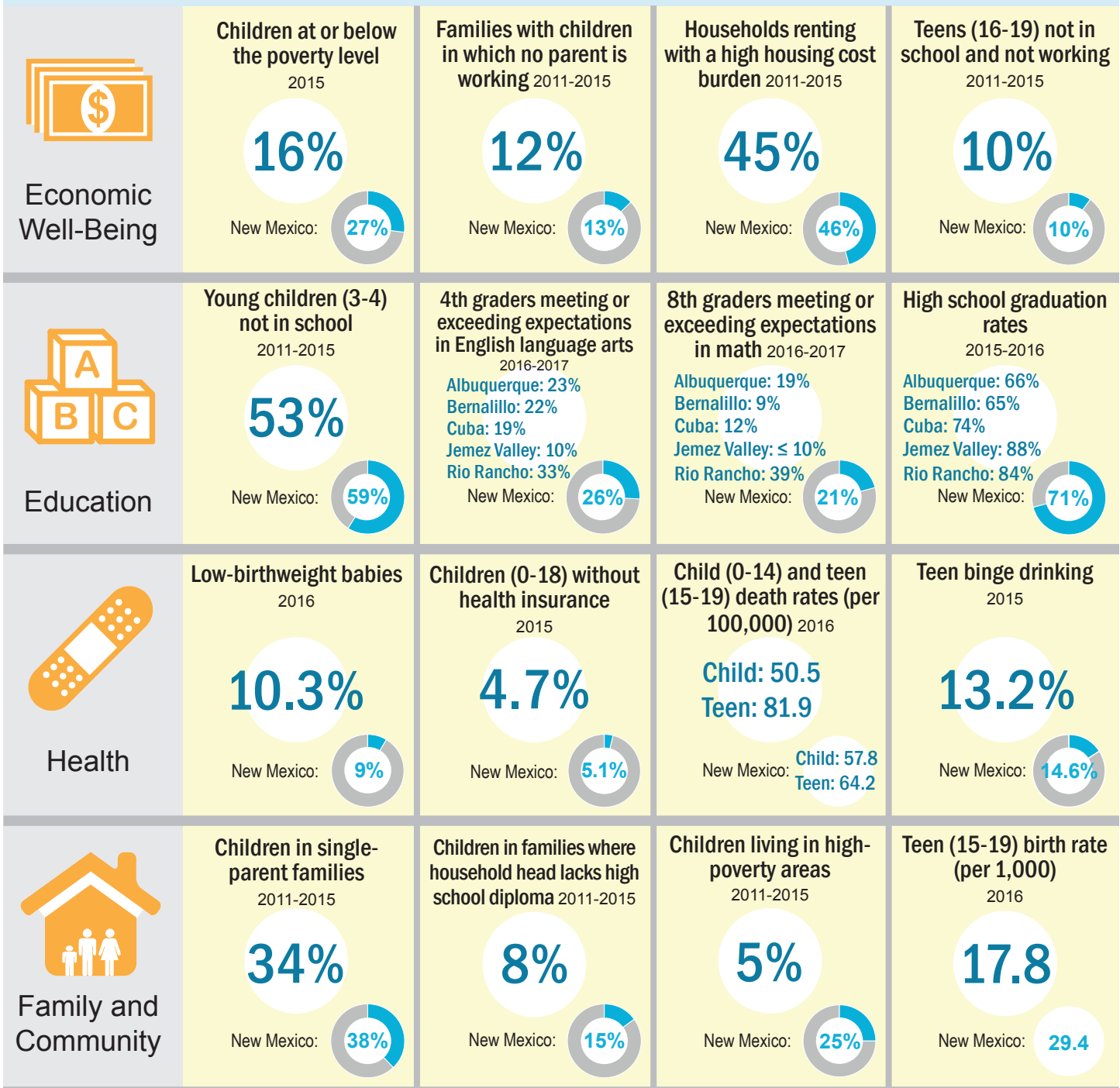


# Sandoval County KIDS COUNT Profile

## Domains

## KIDS COUNT Indicators of child well-being



The above data are identical to data presented in the 2017 New Mexico Kids Count Data Book  
Note: Unless otherwise noted, "children" refers to ages 0-17

Sources: Children in poverty: U.S. Census, Small Area Income and Poverty Estimates; Families with no working parent: American Community Survey (ACS), Table B23007; Households with high housing cost burden: ACS Table B25070; Teens not in school/working: ACS Table B14005; Young children not in school: ACS Table B14003; English Language Arts and Math proficiencies: NM Public Education Department (PED), "PARCC Proficiencies 2017"; High school graduation rates: NM PED, "Webfiles cohort of 2016 4-Year Graduation Rates"; Low-birthweight babies: NM Department of Health (DOH), Indicator-Based Information System for Public Health (IBIS); Children without health insurance: U.S. Census Bureau, Small Area Health Insurance Estimates; Child and teen death rates: NM DOH IBIS; Teen binge drinking: NM Youth Risk and Resiliency Survey; Children in single-parent families: ACS Table B09002; Children in families where household head lacks HS diploma: ACS Table B17018; Children living in high-poverty areas: Population Reference Bureau analysis of ACS data; Teen birth rate: NM DOH IBIS

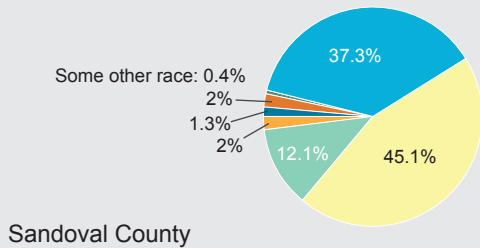


Get more KIDS COUNT data at  
[datacenter.kidscount.org/data#NM](http://datacenter.kidscount.org/data#NM)

# Sandoval County KIDS COUNT Profile

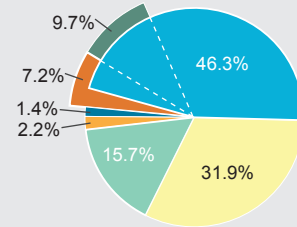
## Population demographics

Total population (all ages) by race and ethnicity\* 2016

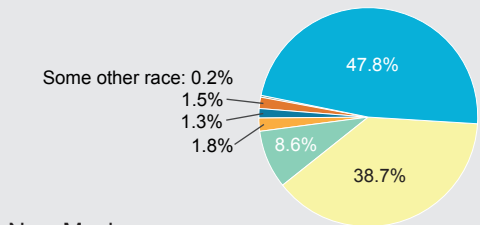


Sandoval County

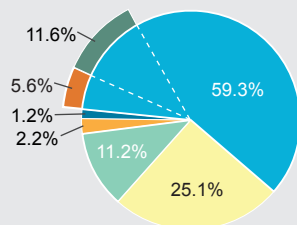
Child population (ages 0-19) by race and ethnicity\* 2016



Sandoval County



New Mexico



New Mexico

■ Hispanic  
■ White  
■ Native American  
■ Black  
■ Asian/Pacific Islander  
■ Two or more races  
■ Some other race

The U.S. Census considers Hispanic an ethnicity rather than a race. Since people who identify as Hispanic may also identify as a race, the sum of all numbers may be greater than 100% due to overlap. Where that overlap is significant, the "two or more races" and/or the "some other race" categories are shown separately.

Families with children where no parent is in workforce\*\* 2016

|                 | Number | Percent |
|-----------------|--------|---------|
| Sandoval County | 1,577  | 11%     |
| New Mexico      | 25,906 | 12.5%   |

Total population (all ages) 2016

|                 | Number    | Percentage of state population |
|-----------------|-----------|--------------------------------|
| Sandoval County | 138,117   | 6.6%                           |
| New Mexico      | 2,082,669 | 100%                           |

Households receiving SNAP benefits 2016

|                 | Number  | Percent |
|-----------------|---------|---------|
| Sandoval County | 5,789   | 11.9%   |
| New Mexico      | 126,654 | 16.6%   |

Child population (ages 0-19) 2016

|                 | Number  | Percentage of state population |
|-----------------|---------|--------------------------------|
| Sandoval County | 37,585  | 6.7%                           |
| New Mexico      | 559,130 | 100%                           |

Rate of substantiated child abuse 2017

|                 | Rate (per 1,000 children) |
|-----------------|---------------------------|
| Sandoval County | 11                        |
| New Mexico      | 25                        |

Median household income 2016

|                 | Number   | Percent of state median income |
|-----------------|----------|--------------------------------|
| Sandoval County | \$60,158 | 132%                           |
| New Mexico      | \$45,674 | 100%                           |

\*All data shown for Whites, Native Americans, Blacks, and Asian/Pacific Islanders are for people who did not also identify as Hispanic.

\*\*The workforce includes those who are either working or unemployed but actively seeking work.

Sources: U.S. Census American Community Survey, 5-year estimates, 2012-2016: Total population by race & ethnicity: Table DP05; Child population by race & ethnicity: Tables B01001B, B01001C, B01001D, B01001E, B01001F, B01001G, B01001H, B01001I; Families with children where no parent is in workforce: B23007; Households receiving SNAP benefits: DP03; Rate of substantiated child abuse: NM Children, Youth and Families Protected Services Division, Information request received Nov. 2017; Total and child population: B01001; Median household income: B19013

Updated 3.7.18



Get more KIDS COUNT data at  
[datacenter.kidscount.org/data#NM](http://datacenter.kidscount.org/data#NM)