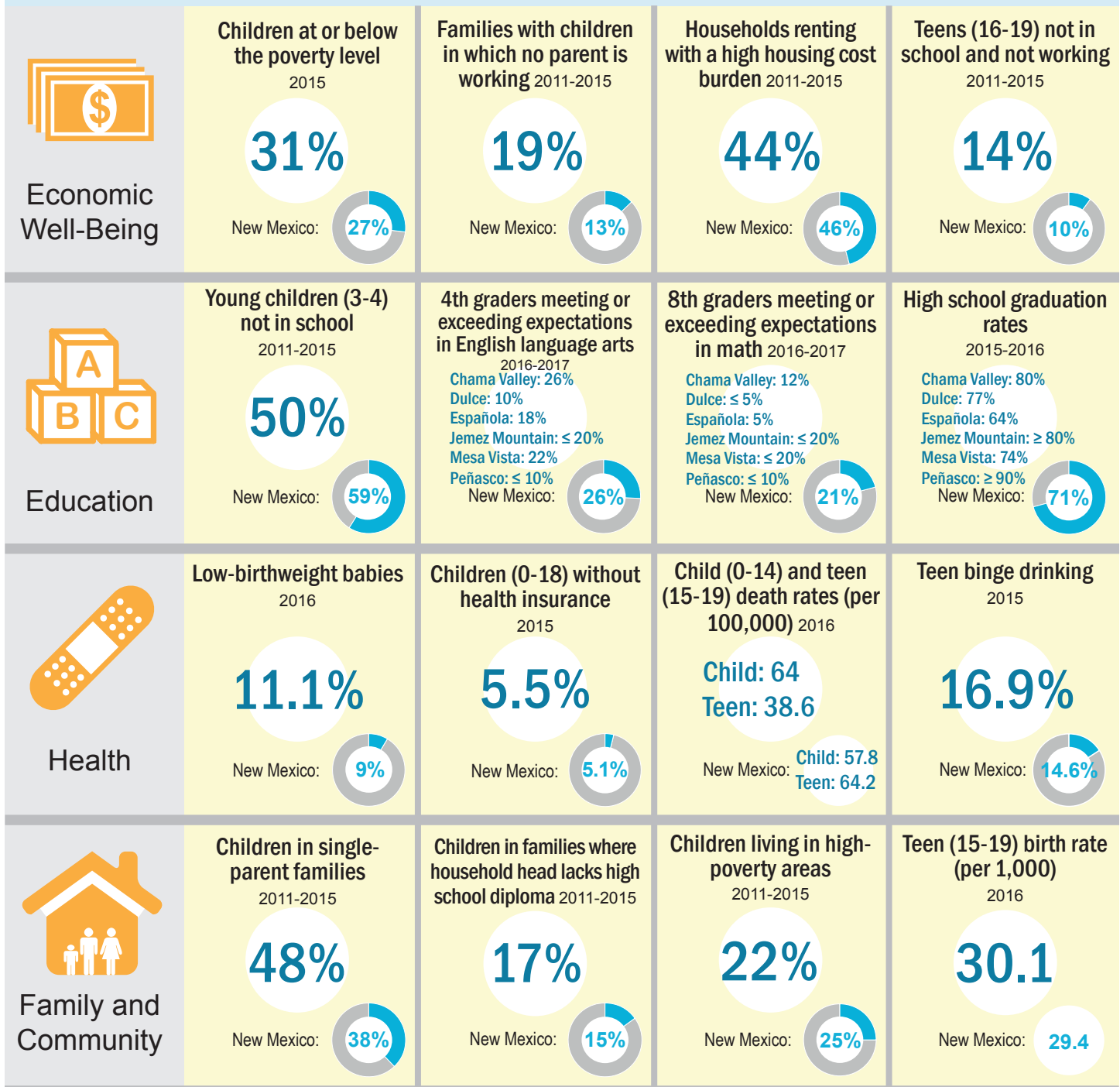


Rio Arriba County KIDS COUNT Profile

Domains

KIDS COUNT Indicators of child well-being



The above data are identical to data presented in the 2017 New Mexico Kids Count Data Book
Note: Unless otherwise noted, "children" refers to ages 0-17

Sources: Children in poverty: U.S. Census, Small Area Income and Poverty Estimates; Families with no working parent: American Community Survey (ACS), Table B23007; Households with high housing cost burden: ACS Table B25070; Teens not in school/working: ACS Table B14005; Young children not in school: ACS Table B14003; English Language Arts and Math proficiencies: NM Public Education Department (PED), "PARCC Proficiencies 2017"; High school graduation rates: NM PED, "Webfiles cohort of 2016 4-Year Graduation Rates"; Low-birthweight babies: NM Department of Health (DOH), Indicator-Based Information System for Public Health (IBIS); Children without health insurance: U.S. Census Bureau, Small Area Health Insurance Estimates; Child and teen death rates: NM DOH IBIS; Teen binge drinking: NM Youth Risk and Resiliency Survey; Children in single-parent families: ACS Table B09002; Children in families where household head lacks HS diploma: ACS Table B17018; Children living in high-poverty areas: Population Reference Bureau analysis of ACS data; Teen birth rate: NM DOH IBIS

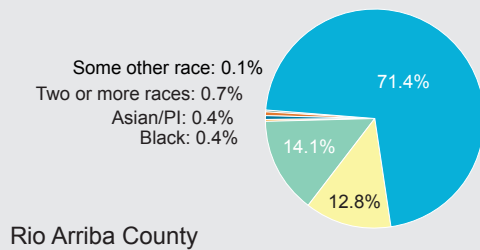


Get more KIDS COUNT data at
datacenter.kidscount.org/data#NM

Rio Arriba County KIDS COUNT Profile

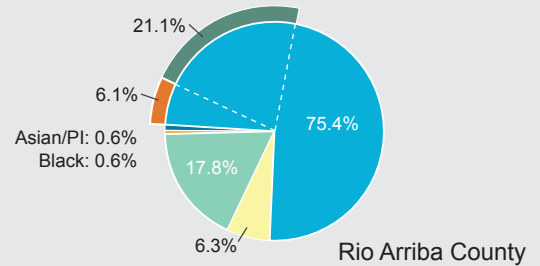
Population demographics

Total population (all ages) by race and ethnicity* 2016



Rio Arriba County

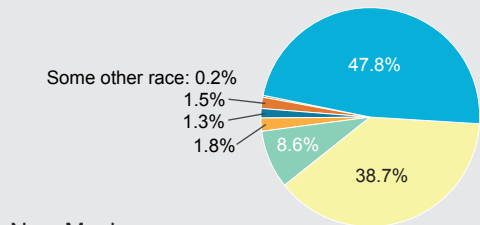
Child population (ages 0-19) by race and ethnicity* 2016



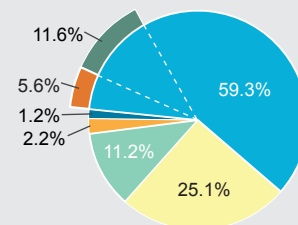
Rio Arriba County

■ Hispanic
■ White
■ Native American
■ Black
■ Asian/Pacific Islander
■ Two or more races
■ Some other race

The U.S. Census considers Hispanic an ethnicity rather than a race. Since people who identify as Hispanic may also identify as a race, the sum of all numbers may be greater than 100% due to overlap. Where that overlap is significant, the "two or more races" and/or the "some other race" categories are shown separately.



New Mexico



New Mexico

Families with children where no parent is in workforce** 2016

	Number	Percent
Rio Arriba County	557	19.7%
New Mexico	25,906	12.5%

Total population (all ages) 2016

	Number	Percentage of state population
Rio Arriba County	39,924	1.9%
New Mexico	2,082,669	100%

Households receiving SNAP benefits 2016

	Number	Percent
Rio Arriba County	2,205	16.5%
New Mexico	126,654	16.6%

Child population (ages 0-19) 2016

	Number	Percentage of state population
Rio Arriba County	10,685	1.9%
New Mexico	559,130	100%

Rate of substantiated child abuse 2017

	Rate (per 1,000 children)
Rio Arriba County	58
New Mexico	25

Median household income 2016

	Number	Percent of state median income
Rio Arriba County	\$33,972	74%
New Mexico	\$45,674	100%

*All data shown for Whites, Native Americans, Blacks, and Asian/Pacific Islanders are for people who did not also identify as Hispanic.

**The workforce includes those who are either working or unemployed but actively seeking work.

Sources: U.S. Census American Community Survey, 5-year estimates, 2012-2016: Total population by race & ethnicity: Table DP05; Child population by race & ethnicity: Tables B01001B, B01001C, B01001D, B01001E, B01001F, B01001G, B01001H, B01001I; Families with children where no parent is in workforce: B23007; Households receiving SNAP benefits: DP03; Rate of substantiated child abuse: NM Children, Youth and Families Protected Services Division, Information request received Nov. 2017; Total and child population: B01001; Median household income: B19013

Updated 3.7.18



Get more KIDS COUNT data at
datacenter.kidscount.org/data#NM