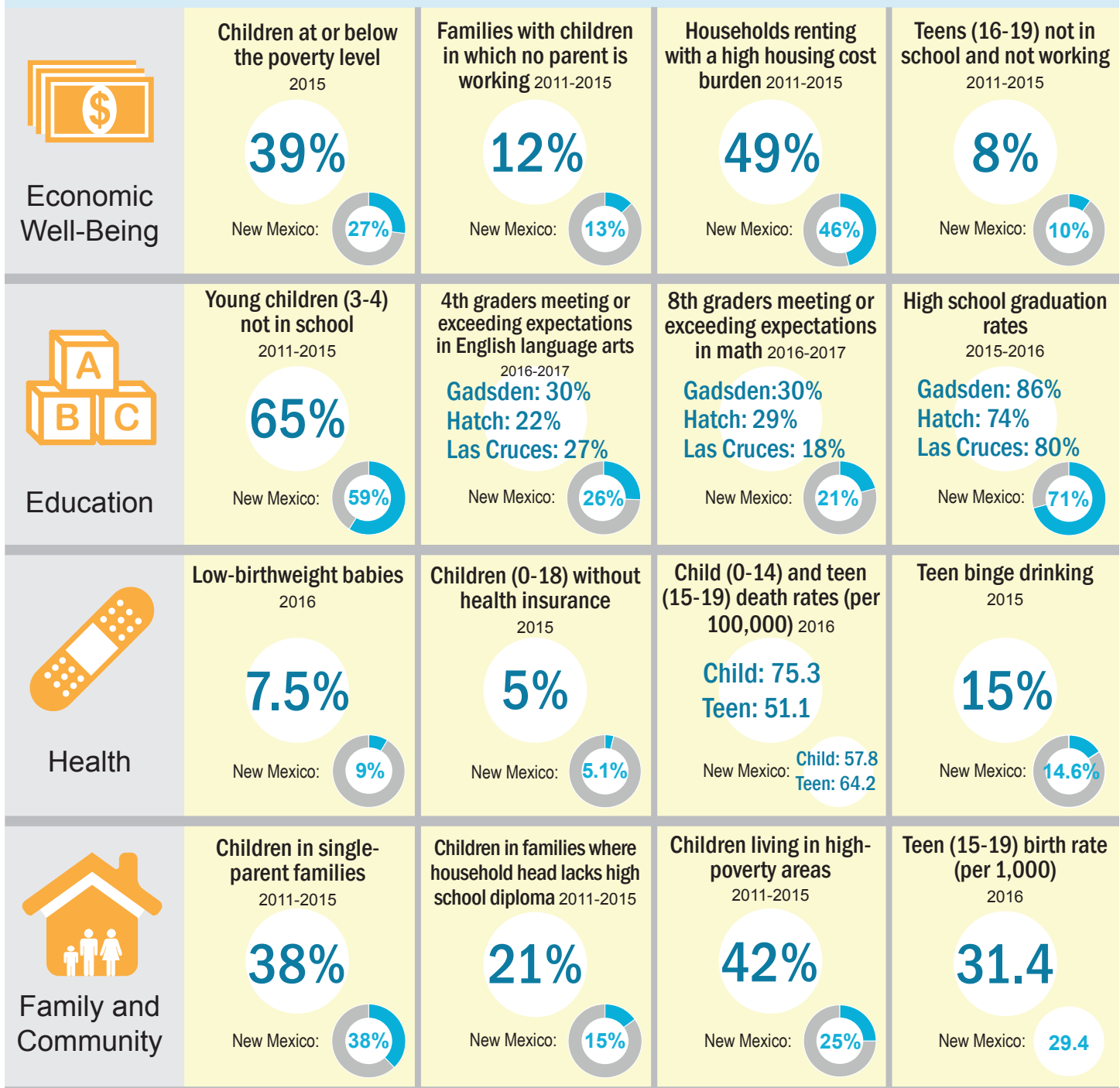


# Doña Ana County KIDS COUNT Profile

## Domains

## KIDS COUNT Indicators of child well-being



The above data are identical to data presented in the 2017 New Mexico Kids Count Data Book  
Note: Unless otherwise noted, "children" refers to ages 0-17

Sources: Children in poverty: U.S. Census, Small Area Income and Poverty Estimates; Families with no working parent: American Community Survey (ACS), Table B23007; Households with high housing cost burden: ACS Table B25070; Teens not in school/working: ACS Table B14005; Young children not in school: ACS Table B14003; English Language Arts and Math proficiencies: NM Public Education Department (PED), "PARCC Proficiencies 2017"; High school graduation rates: NM PED, "Webfiles cohort of 2016 4-Year Graduation Rates"; Low-birthweight babies: NM Department of Health (DOH), Indicator-Based Information System for Public Health (IBIS); Children without health insurance: U.S. Census Bureau, Small Area Health Insurance Estimates; Child and teen death rates: NM DOH IBIS; Teen binge drinking: NM Youth Risk and Resiliency Survey; Children in single-parent families: ACS Table B09002; Children in families where household head lacks HS diploma: ACS Table B17018; Children living in high-poverty areas: Population Reference Bureau analysis of ACS data; Teen birth rate: NM DOH IBIS



Get more KIDS COUNT data at  
[datacenter.kidscount.org/data#NM](http://datacenter.kidscount.org/data#NM)

# Doña Ana County KIDS COUNT Profile

## Population demographics

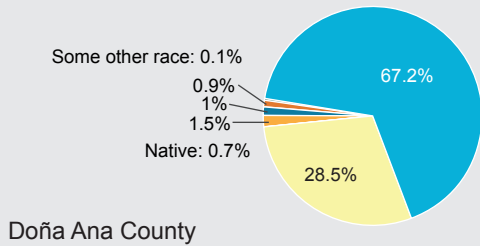
**Total population (all ages) 2016**

	Number	Percentage of state total population
Doña Ana County	213,825	10.3%
New Mexico	2,082,669	100%

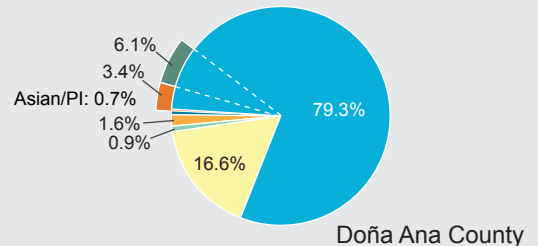
**Child population (ages 0-19) 2016**

	Number	Percentage of state child population
Doña Ana County	63,318	11.3%
New Mexico	559,130	100%

**Total population (all ages) by race and ethnicity\* 2016**



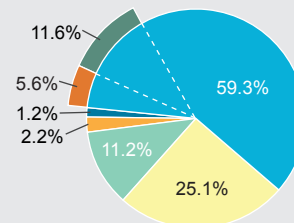
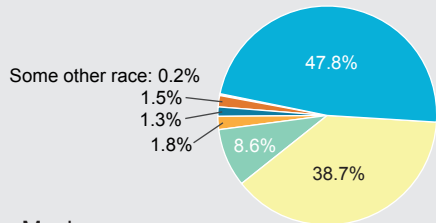
**Child population (ages 0-19) by race and ethnicity\* 2016**



Doña Ana County

Doña Ana County

The U.S. Census considers Hispanic an ethnicity rather than a race. Since people who identify as Hispanic may also identify as a race, the sum of all numbers may be greater than 100% due to overlap. Where that overlap is significant, the "two or more races" and/or the "some other race" categories are shown separately.



New Mexico

New Mexico

**Households receiving SNAP benefits 2016**

	Number	Percent
Doña Ana County	15,837	21.1%
New Mexico	126,654	16.6%

**Families with children where no parent is in workforce\*\* 2016**

	Number	Percent
Doña Ana County	2,500	10.8%
New Mexico	25,906	12.5%

**Rate of substantiated child abuse 2017**

	Rate (per 1,000 children)
Doña Ana County	24
New Mexico	25

**Median household income 2016**

	Number	Percent of state median income
Doña Ana County	\$38,636	85%
New Mexico	\$45,674	100%

\*All data shown for Whites, Native Americans, Blacks, and Asian/Pacific Islanders are for people who did not also identify as Hispanic.

\*\*The workforce includes those who are either working or unemployed but actively seeking work.

Sources: U.S. Census American Community Survey, 5-year estimates, 2012-2016: Total population by race & ethnicity: Table DP05; Child population by race & ethnicity: Tables B01001B, B01001C, B01001D, B01001E, B01001F, B01001G, B01001H, B01001I; Families with children where no parent is in workforce: B23007; Households receiving SNAP benefits: DP03; Rate of substantiated child abuse: NM Children, Youth and Families Protected Services Division, Information request received Nov. 2017; Total and child population: B01001; Median household income: B19013  
Updated 4.7.18



Get more KIDS COUNT data at [datacenter.kidscount.org/data#NM](http://datacenter.kidscount.org/data#NM)