

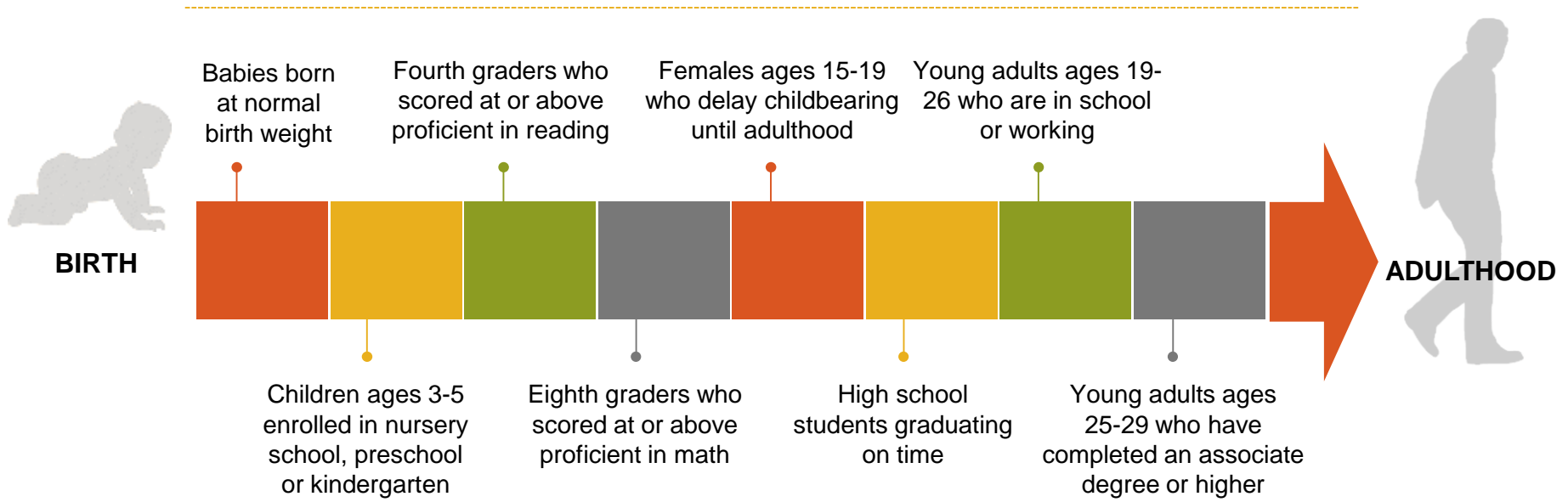
Equity Matters

Patrick T. McCarthy

June 27, 2016



Path to a Bright Future



Children who live with a householder who has at least a high school diploma



Children who live in two-parent families



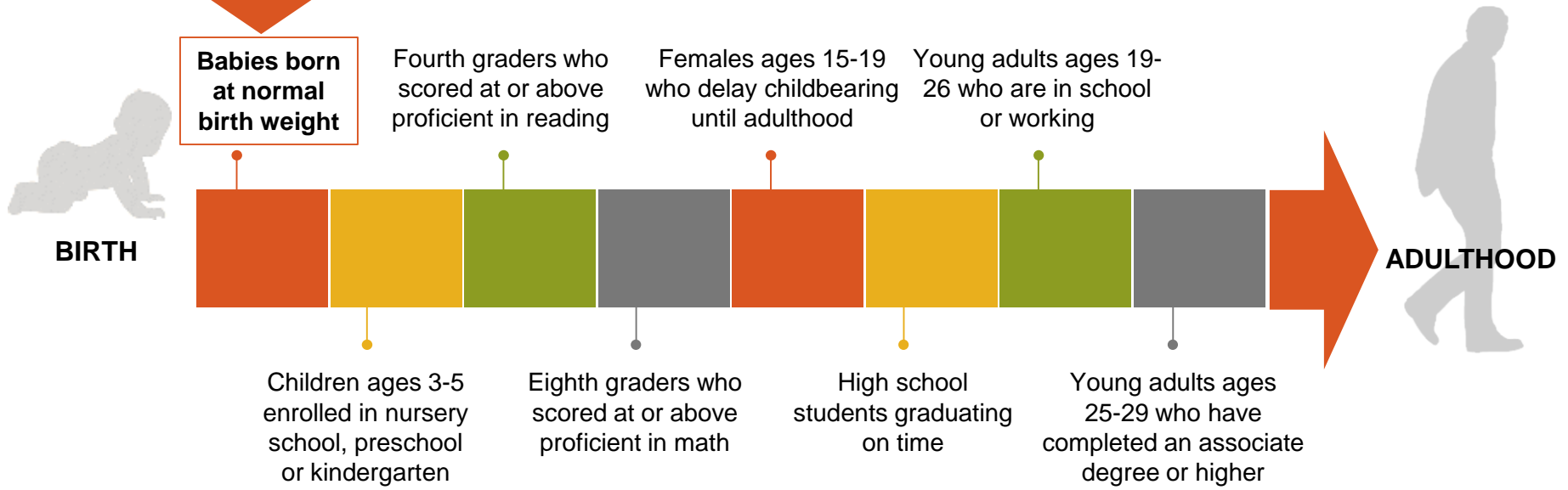
Children who live in families with incomes at or above 200 percent of poverty



Children who live in low-poverty areas (less than 20 percent in poverty)

Path to a Bright Future

91%



Children who live with a householder who has at least a high school diploma



Children who live in two-parent families

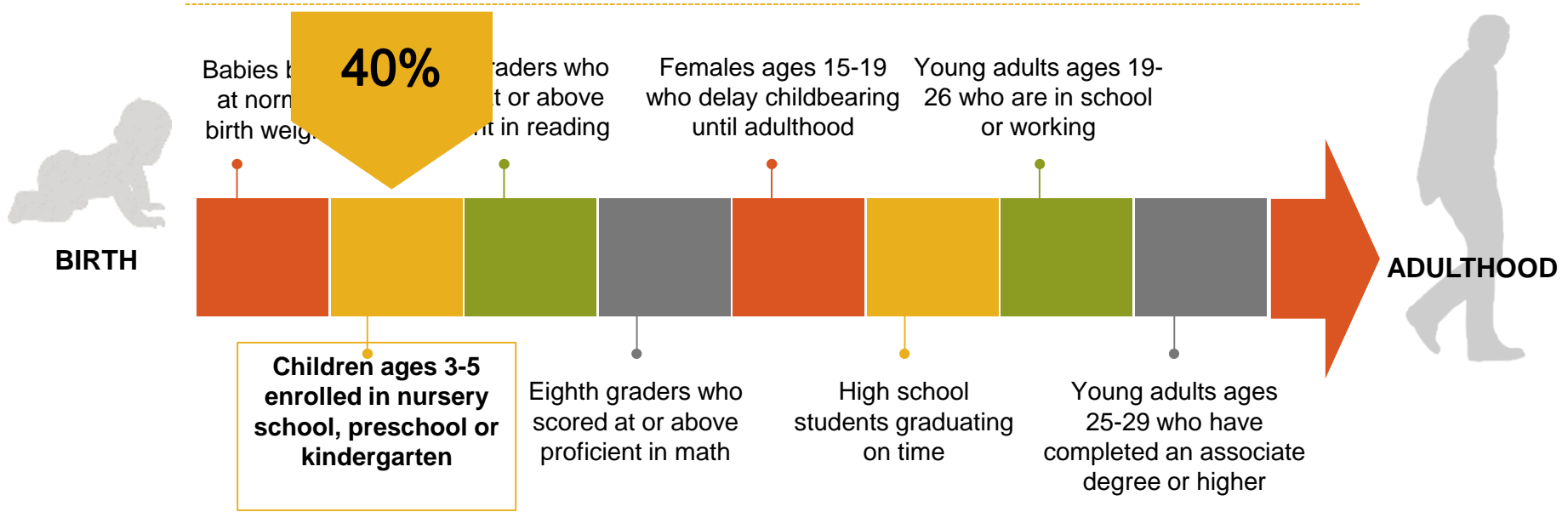


Children who live in families with incomes at or above 200 percent of poverty



Children who live in low-poverty areas (less than 20 percent in poverty)

Path to a Bright Future



Children who live with a householder who has at least a high school diploma



Children who live in families with incomes at or above 200 percent of poverty

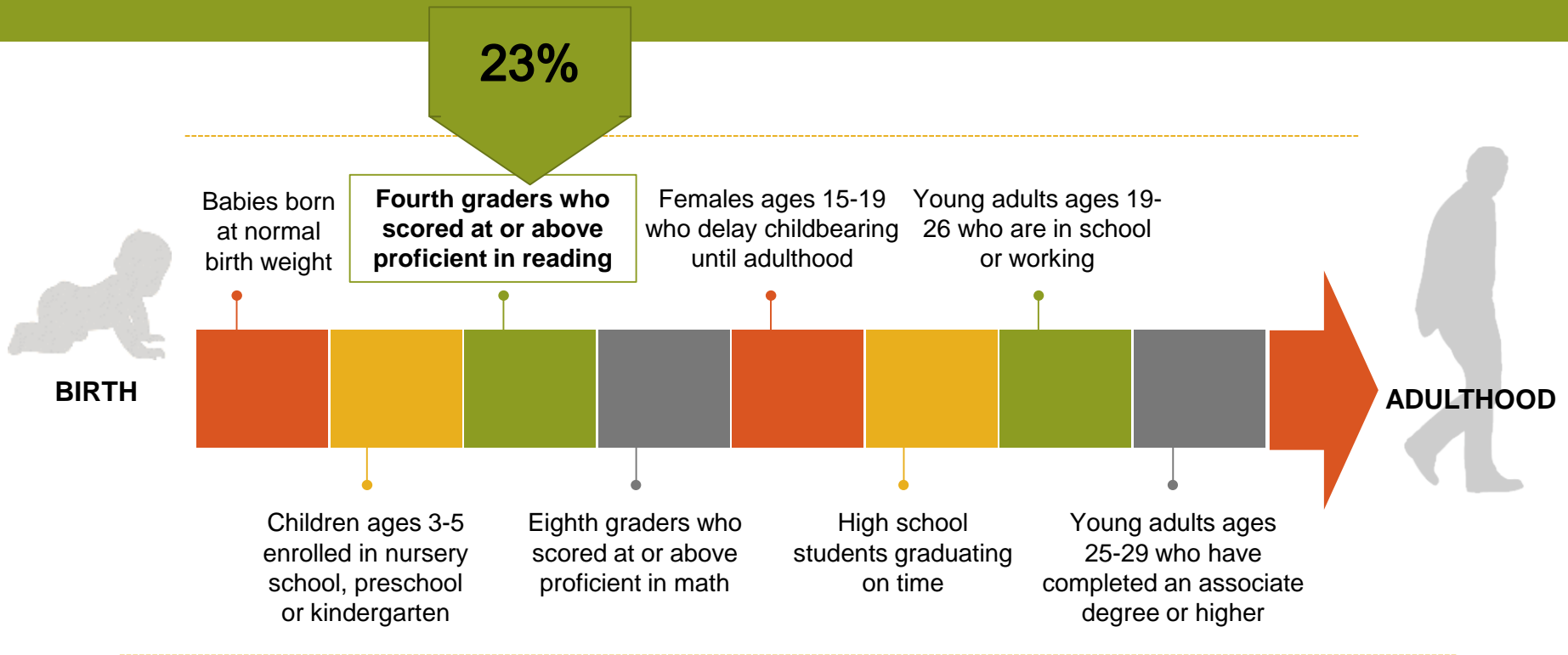


Children who live in two-parent families



Children who live in low-poverty areas (less than 20 percent in poverty)

Path to a Bright Future



Children who live with a householder who has at least a high school diploma



Children who live in two-parent families

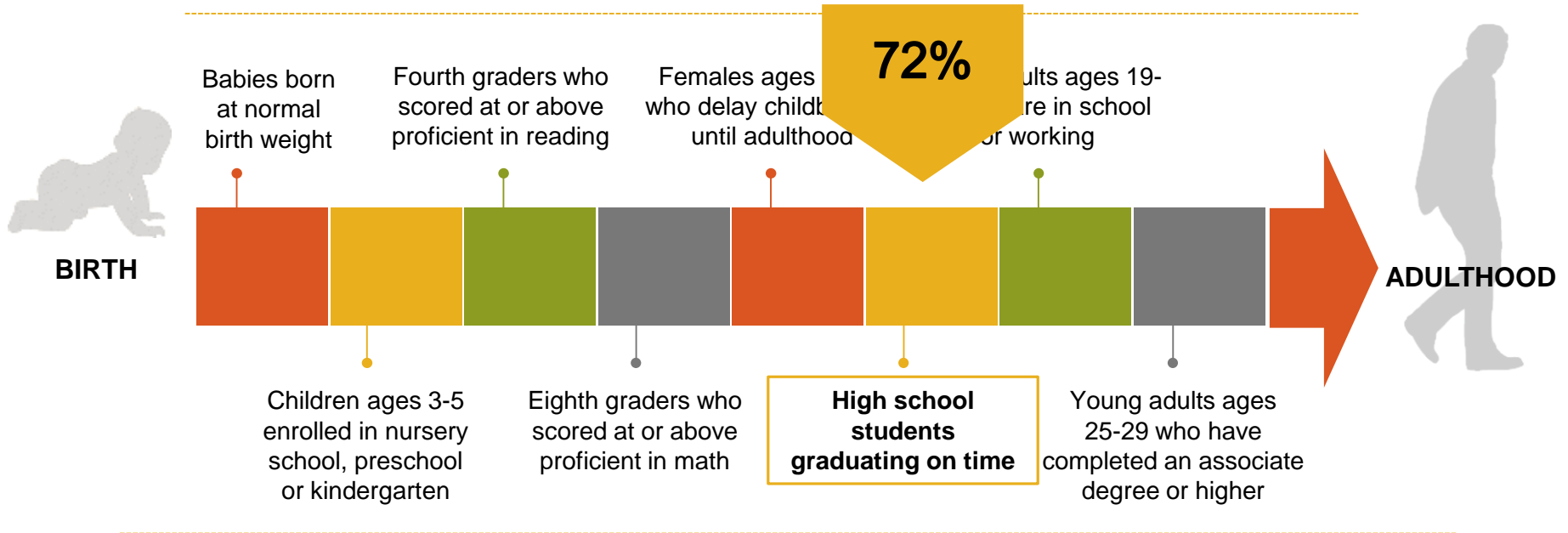


Children who live in families with incomes at or above 200 percent of poverty



Children who live in low-poverty areas (less than 20 percent in poverty)

Path to a Bright Future



Children who live with a householder who has at least a high school diploma



Children who live in families with incomes at or above 200 percent of poverty

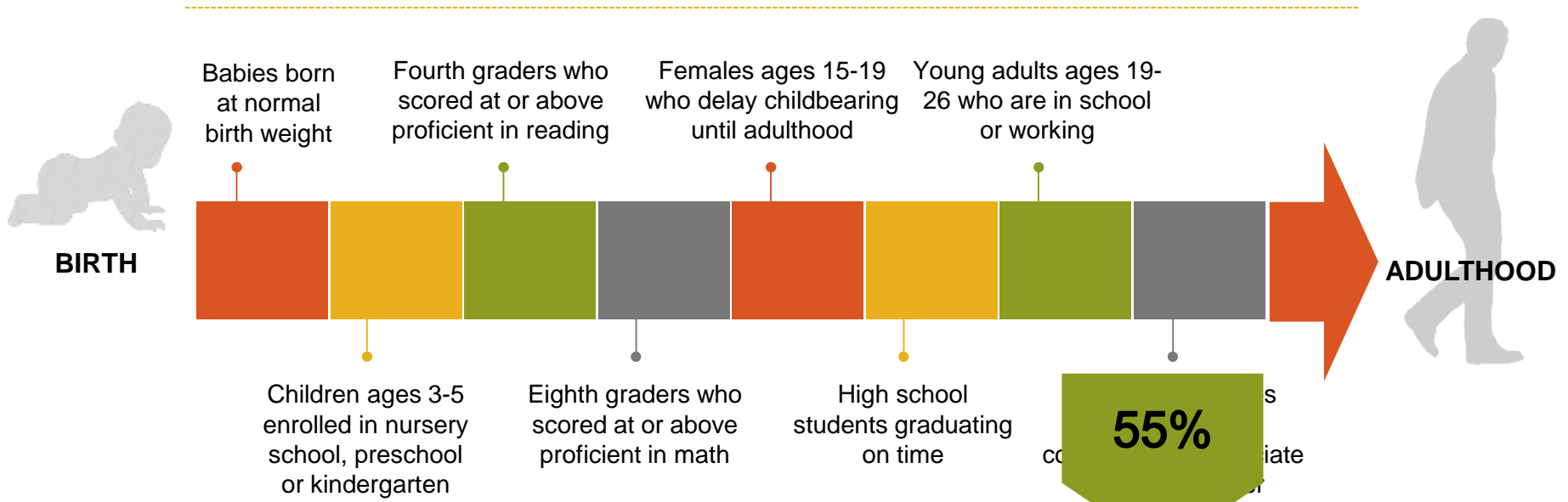


Children who live in two-parent families



Children who live in low-poverty areas (less than 20 percent in poverty)

Path to a Bright Future



Children who live with a householder who has at least a high school diploma



Children who live in two-parent families



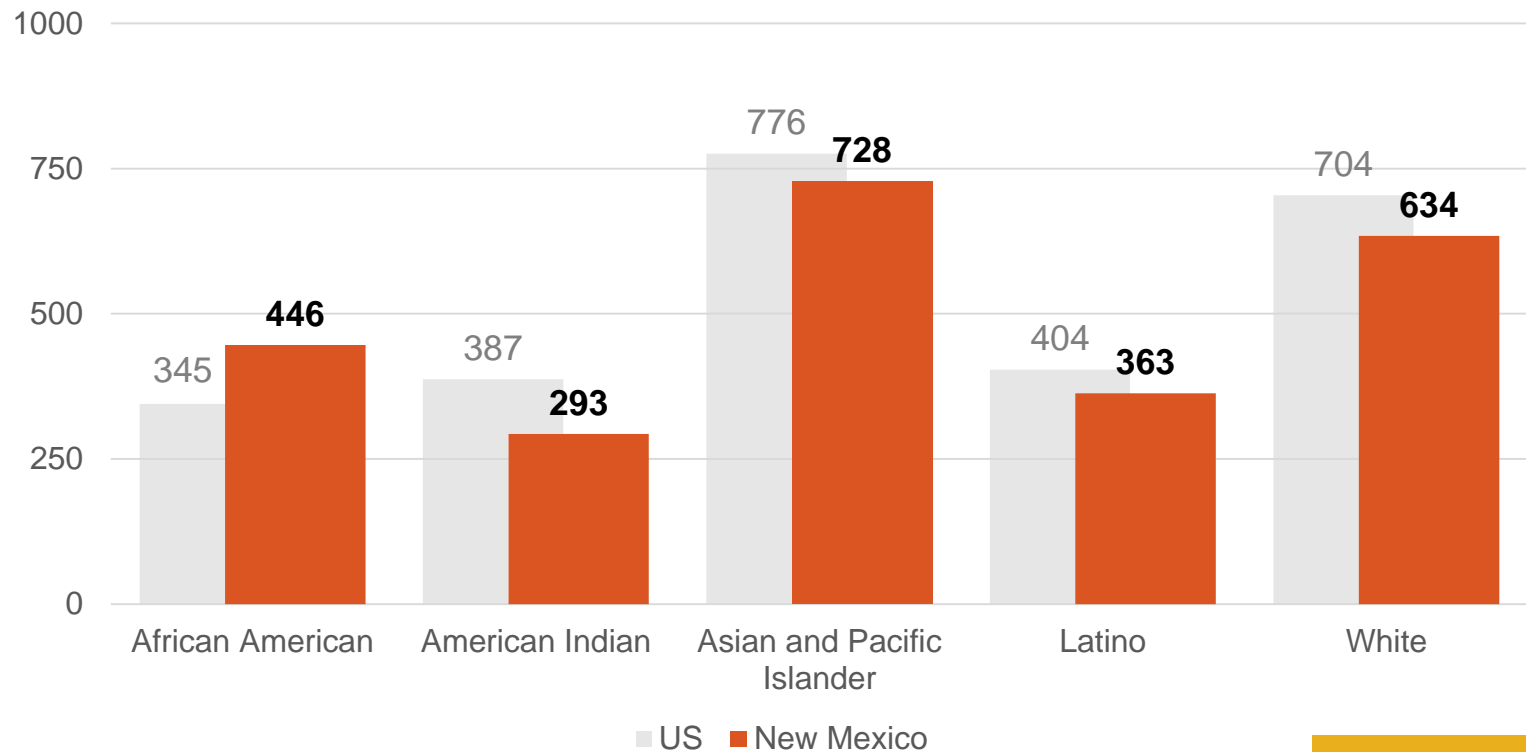
Children who live in families with incomes at or above 200 percent of poverty



Children who live in low-poverty areas (less than 20 percent in poverty)

Measuring the Milestones

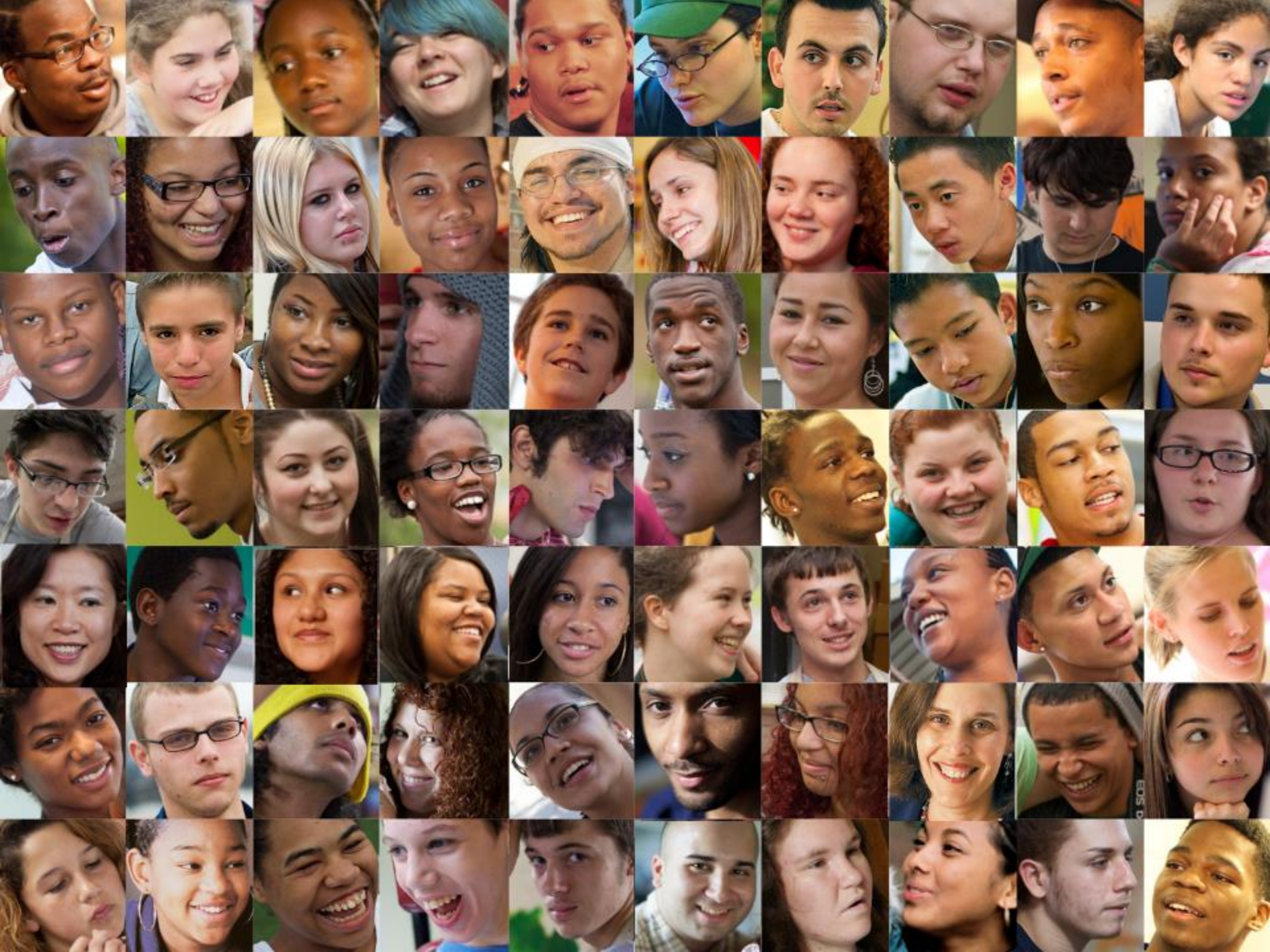
Composite Index



**Scores out
of a possible
1000**

Source: [Race for Results](#), Annie E. Casey Foundation, 2014







THE ANNIE E. CASEY FOUNDATION

Patrick T. McCarthy, President & CEO

www.aecf.org