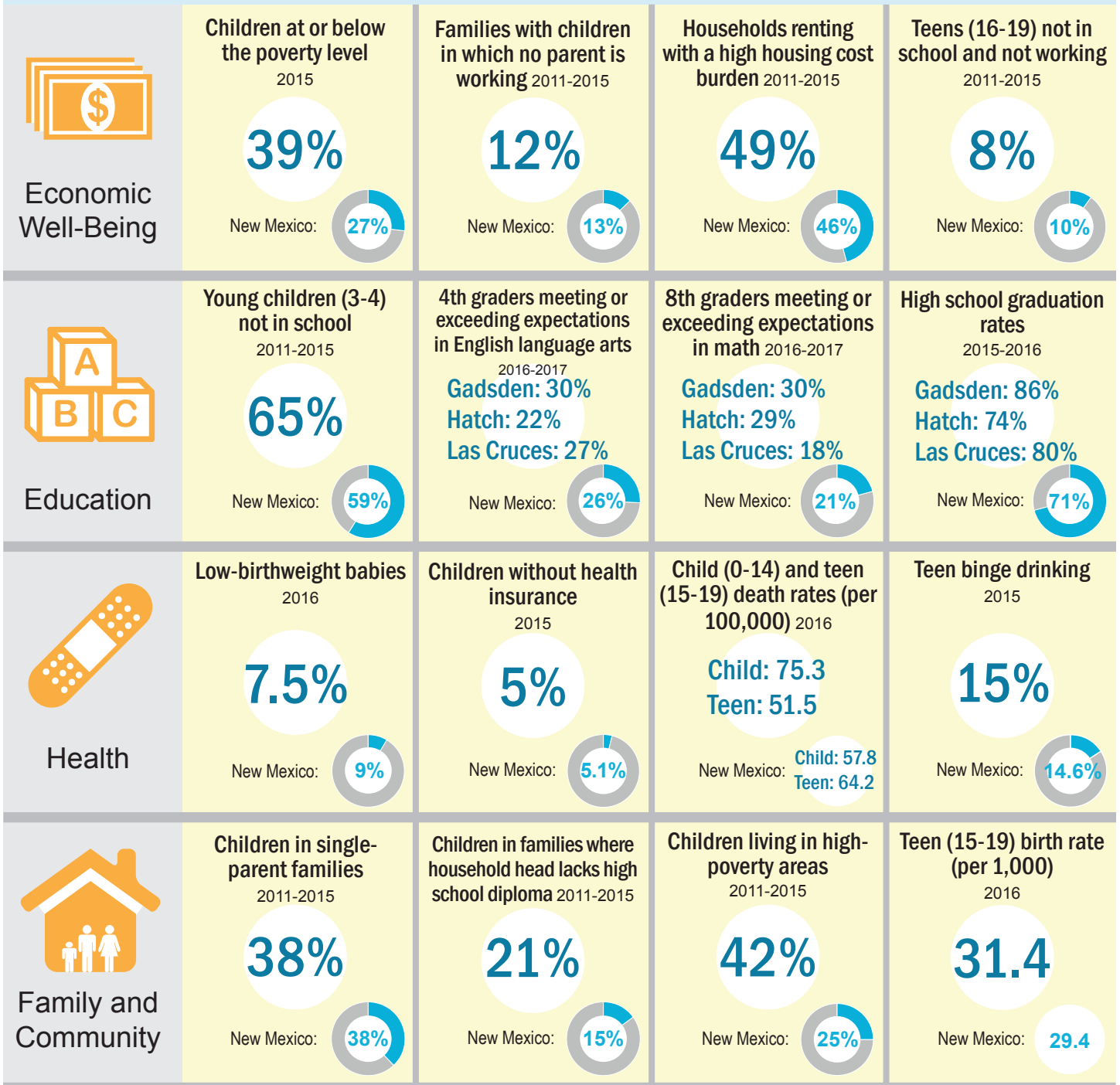


Doña Ana County KIDS COUNT Profile

Domains

KIDS COUNT Indicators of child well-being



Sources: U.S. Census, Small Area Income and Poverty Estimates (children in poverty); American Community Survey (ACS), Table B23007 (families with no parent working); ACS Table B25070 (households with high housing cost burden); ACS Table B14005 (teens not in school/working); ACS Table B14003 (young children not in school); NM Public Education Department (PED), "PARCC Proficiencies 2017" (English Language Arts and Math); NM PED, "Webfiles cohort of 2016 4-Year Graduation Rates" (high school graduation rates); NM Department of Health, Indicator-Based Information System for Public Health (IBIS) (low-birthweight babies); U.S. Census Bureau, Small Area Health Insurance Estimates (children without health insurance); NM DOH IBIS (child and teen death rates); NM Youth Risk and Resiliency Survey (teen binge drinking); ACS Table B09002 (children in single-parent families); ACS Table B17018 (children in families where household head lacks HS diploma); Population Reference Bureau analysis of ACS data (children living in high-poverty areas); NM DOH IBIS (teen birth rate)



Celebrating 30 Years

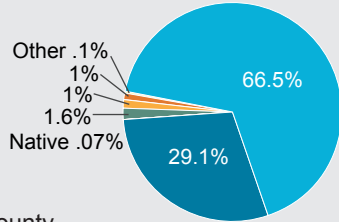


Get more KIDS COUNT data at datacenter.kidscount.org/data#NM

Doña Ana County KIDS COUNT Profile

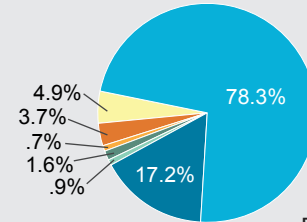
Population demographics

Total population (all ages) by race and ethnicity 2015

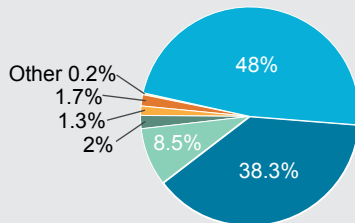


Doña Ana County

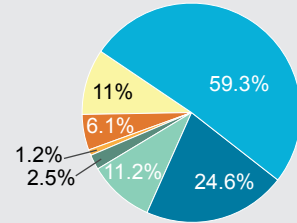
Child population (ages 0-19) by race and ethnicity 2015



Doña Ana County



New Mexico



New Mexico

Families with children where no parent is in workforce* 2015

	Number	Percent
Doña Ana County	2,717	11.6%
New Mexico	22,659	11.4%

Households receiving SNAP benefits 2015

	Number	Percent
Doña Ana County	15,310	20.5%
New Mexico	133,347	17.5%

Rate of substantiated child abuse 2016

	Rate (per 1,000 children)
Doña Ana County	15
New Mexico	17

Total population (all ages) 2015

	Number	Percentage of state population
Doña Ana County	213,963	10.3%
New Mexico	2,085,109	100%

Child population (ages 0-19) 2015

	Number	Percentage of state population
Doña Ana County	64,047	11.5%
New Mexico	556,872	100%

Median household income 2015

	Number	Percent of state median income
Doña Ana County	\$38,853	86%
New Mexico	\$45,382	100%

*The workforce includes those who are either working or unemployed but actively seeking work.

Sources: U.S. Census American Community Survey (note: ACS data for New Mexico are 1-year estimates; data for NM counties are 5-year estimates); Table DP05 (total population by race/ethnicity); Tables B01001B, B01001C, B01001D, B01001E, B01001F, B01001G, B01001H, B01001I (child population by race/ethnicity); Table B23007 (children in families where no parent is in workforce); Table DP03 (households receiving SNAP); NM Children, Youth and Families Department "360 Yearly" Reports (child abuse rate); Table B01001 (total and child population); Table B19013 (median household income)

11.6.2017



Celebrating 30 Years



Get more KIDS COUNT data at datacenter.kidscount.org/data#NM