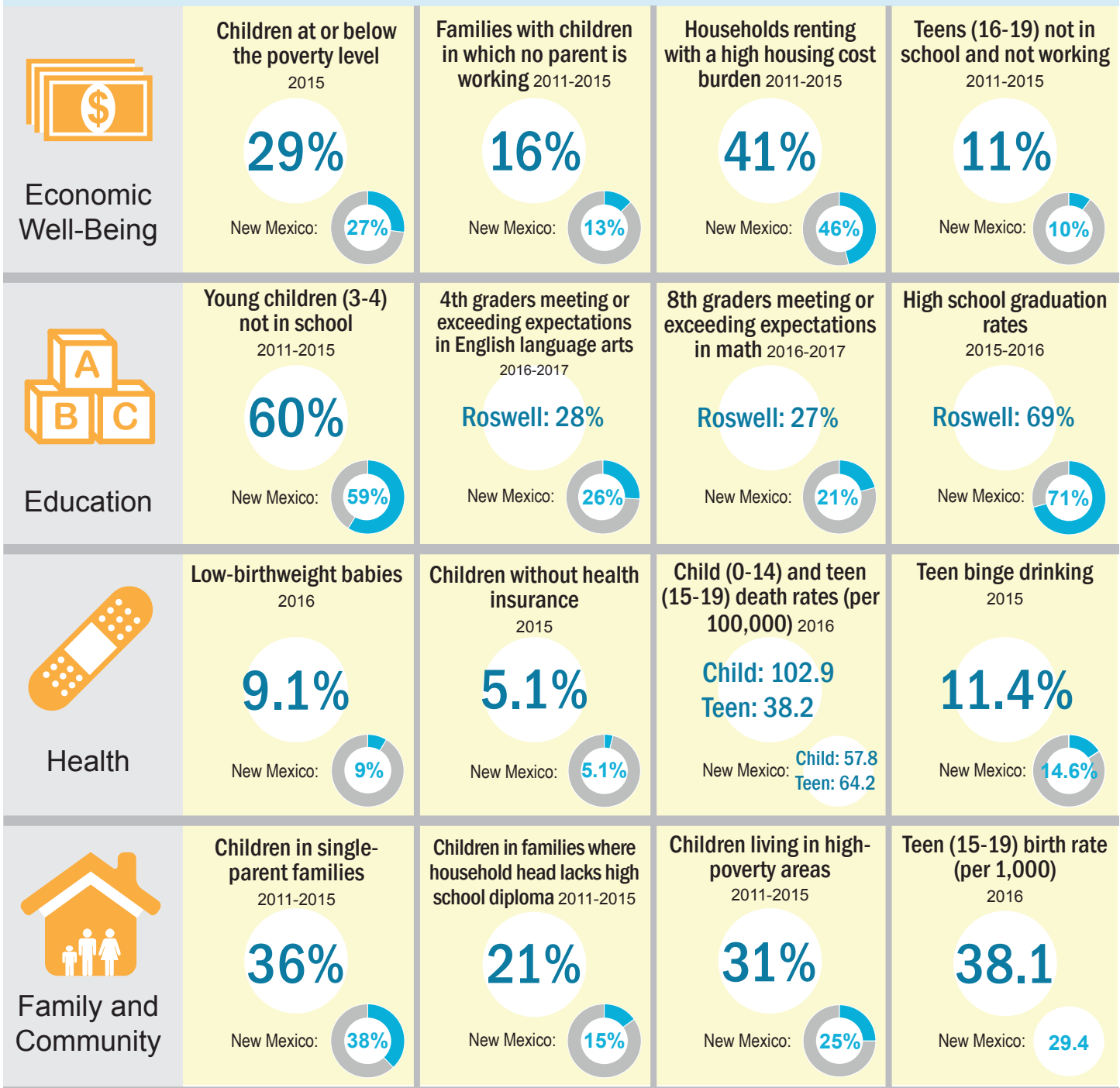


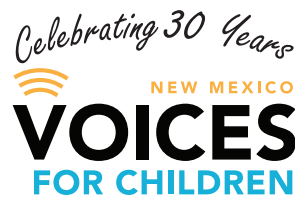
Chavez County KIDS COUNT Profile

Domains

KIDS COUNT Indicators of child well-being



Sources: U.S. Census, Small Area Income and Poverty Estimates (children in poverty); American Community Survey (ACS), Table B23007 (families with no parent working); ACS Table B25070 (households with high housing cost burden); ACS Table B14005 (teens not in school/working); ACS Table B14003 (young children not in school); NM Public Education Department (PED), "PARCC Proficiencies 2017" (English Language Arts and Math); NM PED, "Webfiles cohort of 2016 4-Year Graduation Rates" (high school graduation rates); NM Department of Health, Indicator-Based Information System for Public Health (IBIS) (low-birthweight babies); U.S. Census Bureau, Small Area Health Insurance Estimates (children without health insurance); NM DOH IBIS (child and teen death rates); NM Youth Risk and Resiliency Survey (teen binge drinking); ACS Table B09002 (children in single-parent families); ACS Table B17018 (children in families where household head lacks HS diploma); Population Reference Bureau analysis of ACS data (children living in high-poverty areas); NM DOH IBIS (teen birth rate)

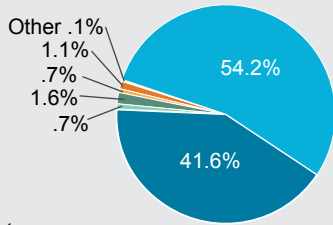


Get more KIDS COUNT data at datacenter.kidscount.org/data#NM

Chavez County KIDS COUNT Profile

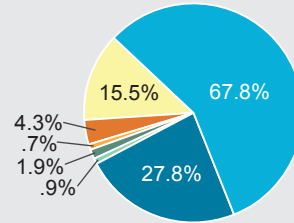
Population demographics

Total population (all ages) by race and ethnicity 2015

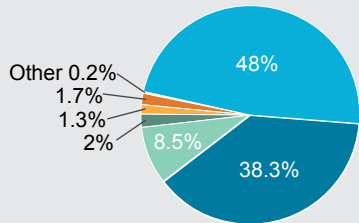


Chavez County

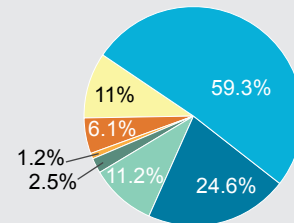
Child population (ages 0-19) by race and ethnicity 2015



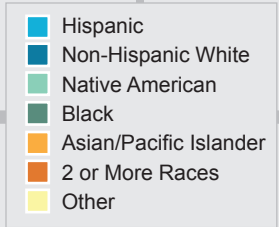
Chavez County



New Mexico



New Mexico



Families with children where no parent is in workforce* 2015

	Number	Percent
Chavez County	1,192	15.7%
New Mexico	22,659	11.4%

Households receiving SNAP benefits 2015

	Number	Percent
Chavez County	4,549	19.4%
New Mexico	133,347	17.5%

Rate of substantiated child abuse 2016

	Rate (per 1,000 children)
Chavez County	15
New Mexico	17

Total population (all ages) 2015

	Number	Percentage of state population
Chavez County	65,811	3.2%
New Mexico	2,085,109	100%

Child population (ages 0-19) 2015

	Number	Percentage of state population
Chavez County	20,139	3.6%
New Mexico	556,872	100%

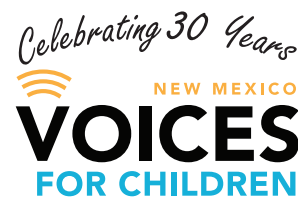
Median household income 2015

	Number	Percent of state median income
Chavez County	\$40,630	90%
New Mexico	\$45,382	100%

*The workforce includes those who are either working or unemployed but actively seeking work.

Sources: U.S. Census American Community Survey (note: ACS data for New Mexico are 1-year estimates; data for NM counties are 5-year estimates); Table DP05 (total population by race/ethnicity); Tables B01001B, B01001C, B01001D, B01001E, B01001F, B01001G, B01001H, B01001I (child population by race/ethnicity); Table B23007 (children in families where no parent is in workforce); Table DP03 (households receiving SNAP); NM Children, Youth and Families Department "360 Yearly" Reports (child abuse rate); Table B01001 (total and child population); Table B19013 (median household income)

11.6.2017



Get more KIDS COUNT data at datacenter.kidscount.org/data#NM