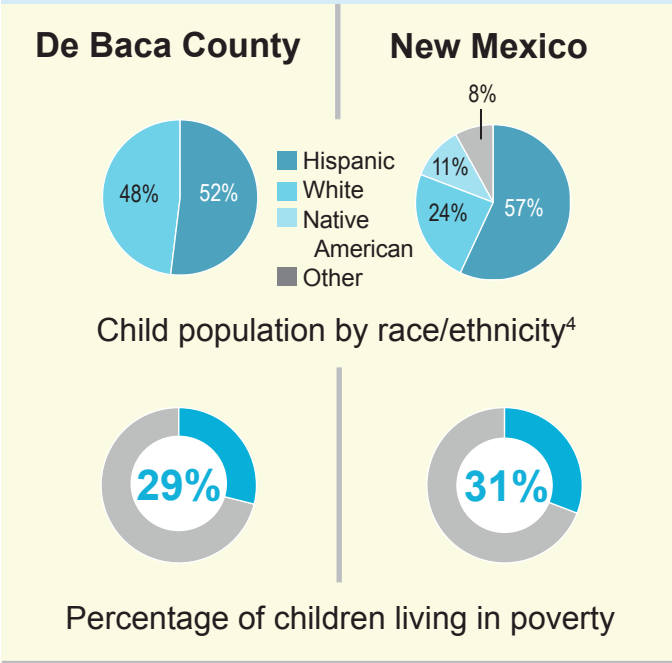


De Baca County

Investments in Early Childhood Care and Education are Still Needed


About this county¹
 Senate Districts: 27
 House Districts: 63

Population served² & estimated annual investment³




Prevention

Home Visiting



3 Babies served

For families with babies zero to three



\$11,403 invested

Child Care Assistance



13 Children served

0 are in high-quality centers


For children under age 12 in families up to 150% FPL



\$53,820 invested


| De Baca County | | NM |
|--|----------|----------|
| Total child population | 477 | 513,903 |
| Children under 5 | 62 | 141,533 |
| Children under 10 | 199 | 285,278 |
| Children living in low-income families | 260 | 262,601 |
| Median household income | \$37,660 | \$43,872 |

NM Pre-K



14 4-year-olds served

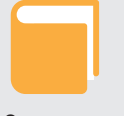
Half-day program for 4-year-olds



\$48,272 invested


Remediation

K-3 Plus



0 K-3rd graders served

Summer reading program for K-3rd graders



\$0 invested

| | | |
|---|---|-----|
| Number of T.E.A.C.H. scholarships awarded last year | 1 | 652 |
|---|---|-----|

T.E.A.C.H. scholarships allow early education providers to increase their educational and training levels, and lead to higher-quality programs.

¹ About this county data from: Census ACS (demographics); and the New Mexico Association for the Education of Young Children (T.E.A.C.H. scholarships)

² Population served data from: CYFD and PED, 2014

³ Estimated investment is based on LFC's average per child investment in FY14

⁴ Race/ethnicity numbers may not total 100% due to rounding and/or categories that are not included in the data

*For detailed sources and notes, please go to www.nmvoices.org

Investments in Early Childhood Care and Education are Still Needed

| Funding history ¹ (in millions) | | Need ² & policy recommendations | Related indicators ³ |
|---|---|--|--|
| Prevention | | | |
| Home Visiting | <p>For families with babies zero to three</p> | <p>Total estimated need \$85 m</p> <p>Recommendation: Increase funding to expand high-quality home visiting services to cover more families and children.</p> | <p>82%</p> <p>The percentage of births that are covered by Medicaid</p> |
| | <p>Child Care Assistance </p> <p>For children under age 12 in families up to 150% FPL</p> | <p>Total estimated need \$143 m</p> <p>Recommendation: End the waiting list for child care assistance and restore services to families up to 200% of the poverty level.</p> | <p>43%</p> <p>The percentage of working families that are low-income</p> |
| NM Pre-K | <p>Half-day program for 4-year-olds</p> | <p>Total estimated need \$121 m (for full-day)</p> <p>Recommendation: Expand NM Pre-K to a full-day program and fully fund it so high-quality pre-K is available to all 4-year-olds.</p> | <p>44%</p> <p>The percentage of 4-year-olds enrolled in NM Pre-K or Head Start</p> |
| | <p>K-3 Plus </p> <p>Summer reading program for K-3rd graders</p> | <p>Total estimated need ... \$86 m</p> <p>Recommendation: Expand K-3 Plus to serve more students in low-income areas.</p> | <p>21%</p> <p>The percentage of 4th graders who are proficient and above in reading</p> |

¹ **Funding history** amounts include: General Fund, other state funds, federal funds and TANF; Funding history sources: LFC Post-Session Reviews and CYFD
² **Estimated need** is based on: LFC estimates; Catherine Kinney's assumptions and analysis in *Land Grant Permanent Fund: Opportunity for Early Childhood Investment, A Summary of the Evidence and an Example of Possible Fund Uses*, prepared for St. Joseph Community Health in 2012; and NM Voices for Children analysis
³ **Related indicators** data from: LFC (Medicaid births); U.S. Census ACS (low-income working families); CYFD and LFC (NM Pre-K and Head Start); and National Assessment of Educational Progress (4th grade reading proficiency)
 For detailed sources and notes, please go to www.nmvoices.org