

Hispanic Children in New Mexico

2007



A KIDS COUNT SPECIAL REPORT



This research was funded by the Annie E. Casey Foundation. We thank them for their support but acknowledge that the findings and conclusions presented in this report are those of the author(s) alone, and do not necessarily reflect the opinions of the Foundation.

Table of Contents

Introduction	1
The 2000 Census	2
Public Policy Concerns	3
All New Mexico	4
Counties	
Bernalillo	6
Catron	8
Chaves	10
Cibola	12
Colfax	14
Curry	16
De Baca	18
Doña Ana	20
Eddy	22
Grant	24
Guadalupe	26
Harding	28
Hidalgo	30
Lea	32
Lincoln	34
Los Alamos	36
Luna	38
McKinley	40
Mora	42
Otero	44
Quay	46
Rio Arriba	48
Roosevelt	50
Sandoval	52
San Juan	54
San Miguel	56
Santa Fe	58
Sierra	60
Socorro	62
Taos	64
Torrance	66
Union	68
Valencia	70

Introduction

New Mexico has the highest proportion of Hispanics of any state in the country at 42 percent¹ and Hispanic children make up 50 percent of the state's child population. Not surprisingly, New Mexico celebrates a very rich Hispanic cultural heritage. Yet despite their historical contributions, many Hispanics still suffer disadvantages in many important areas when compared with the general population. The goal of this report is to highlight areas in which New Mexico's Hispanic children and their families shoulder a heavy burden, especially regarding economic security and educational attainment.

¹ Betsy Guzman, U.S. Census Bureau, U.S. Dept. of Commerce, The Hispanic Population 2000, 3 (2001), <http://www.census.gov/prod/2001pubs/c2kbr01-3.pdf>.

The 2000 Census

The statistics used in this report were obtained from 2000 census figures, so it is important to understand how the US Census Bureau defines Hispanic ethnicity. A "Hispanic" or "Latino" is defined by the federal government as "a person of Mexican, Puerto Rican, Cuban, South or Central American, or other Spanish culture or origin regardless of race."² "Race," on the other hand, as used by the Bureau, "reflects self-identification by people according to the race or races with which they most closely identify. ... Furthermore, the race categories include both racial and national-origin groups."³ The Bureau's race categories are White, Black/African-American, American Indian/Alaska Native, Asian, and Native Hawaiian or Other Pacific Islander.⁴ The Bureau considers "Hispanic" an ethnic category because Hispanics can be of any race.

While Hispanic data were not available for all indicators (e.g., the percentage of 5- to 15-year-old disabled children living in poverty), the data available for the general population will provide insight into the kinds of situations under which Hispanic children live. Because the census is the most extensive source of data used by state, local, and federal governments in administering various public programs,⁵ there is much to be gleaned from the information regarding the condition of Hispanic children in New Mexico for public policy purposes. For example:

- the percentage of Hispanic children living in poverty is higher than for children in New Mexico generally, especially in the counties of Curry (35%), De Baca (35%), Hidalgo (51%), Lea (38%), and Otero (41%);
- the percentage of Hispanic children with no parents in the labor force is higher (16%) than for children in New Mexico generally;
- the percentage of 18- to 24-year-old Hispanics with at least a high school diploma is lower (64%) than that of the general population (79%); and
- the percentage of 16- to 19-year-old Hispanics who are idle (i.e., not working, enlisted in the military, or enrolled in school) (14%) is slightly higher than for the general 16- to 19-year-old population.

² Roberto R. Ramirez, U.S. Census Bureau, U.S. Dept. of Commerce, *We the People: Hispanics in the United States*, 1 (2004), <http://www.census.gov/prod/2004pubs/censr-18.pdf>.

³ U.S. Census Bureau, U.S. Dept. of Commerce, *Special Appendixes: 2000*, B-38 (2003), <http://www.census.gov/population/cen2000/phc-2-a-B.pdf>.

⁴ *Id.* at B-38 - B-40.

⁵ The Council of Economic Advisors, *The Uses of Census Data: An Analytical Review*, 1-2 (2000), <http://clinton4.nara.gov/media/pdf/censusreview.pdf>. These programs include housing subsidies, public health, public transportation, and education.

Public Policy Concerns

Questions are inevitably raised when child advocates are confronted with statistics such as these. For instance, is there a correlation between children living in poverty, or whose parents are not in the labor force, and levels of educational attainment? If so, how strong is that association? Furthermore, if a 16-year-old is neither working, enlisted in the military, nor enrolled in school, how is that individual spending his or her time? Although the answers to these and other questions are beyond the scope of this report, it is the expectation that the data provided here will give policymakers and public-interest groups a starting point in evaluating how the needs of New Mexico's Hispanic children and families can be met with greater success.

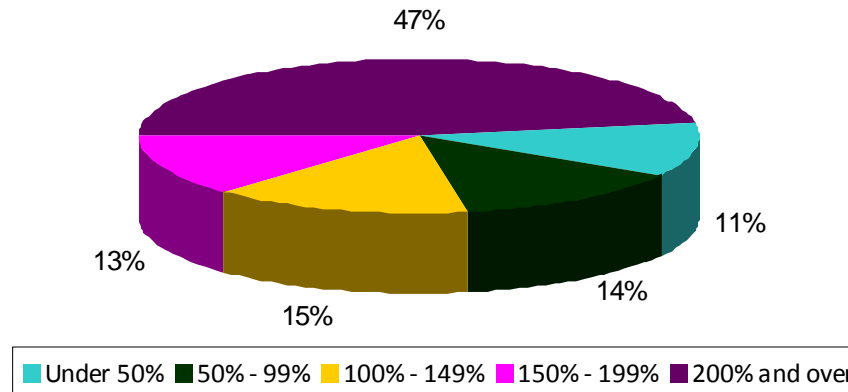
All New Mexico

	All	Hispanic	Percent Hispanic
Total population	1,819,046	765,610	42%
Adult population	1,311,478	507,187	39%
Population under 18 years	507,568	258,423	51%
Percent under 18 years	28%	34%	N/A
Population under 5 years	129,135	69,913	54%
Population 5 to 9 years	141,953	72,548	51%
Population 10 to 14 years	149,462	73,706	49%
Population 15 to 17 years	87,018	42,256	49%

Percent of All Children Living in Families That Are Poor

	All children combined	Children below the poverty level	Percent below the poverty level
Children living with their own families	260,898	54,184	21%
living with a married couple	173,081	21,122	12%
living with a single father	24,053	6,515	27%
living with a single mother	63,764	26,547	42%

Income Level for All Children (Hispanic and Non-Hispanic) by Federal Poverty Level



All New Mexico

	Hispanic Children	All Children
Economic Security		
Percent of children in poverty	30%	25%
Percent of children with parents out of the labor force	16%	14%
Education		
Percent of 3- 4-year olds in preschool	N/A	40%
Percent of 18- 24-year olds enrolled in school	N/A	42%
Percent of 18- 24-year olds with a HS diploma or more	64%	79%
Teens		
Percent of 16- 19-year olds not in school, military, or working	14%	12%
Percent of 16- 19-year olds not in school or HS graduate	16%	12%
Disability		
Percent of 5- 15-year olds with a disability	N/A	6%
Percent of disabled 5- 15-year olds living in poverty	N/A	32%
Language		
Percent of 5- 17-year olds speaking a language other than English	47%	31%
Percent of 5- 17-year olds speaking English "very well"	31%	21%
Percent of linguistically isolated households*	N/A	6%
Housing		
Percent of children living in owner occupied homes	N/A	36%
Percent of households with telephone access	94%	94%

*Census definition: family members 14 years and older who do not speak English well

Source: 2000 Census, U.S. Census Bureau (factfinder.census.gov)

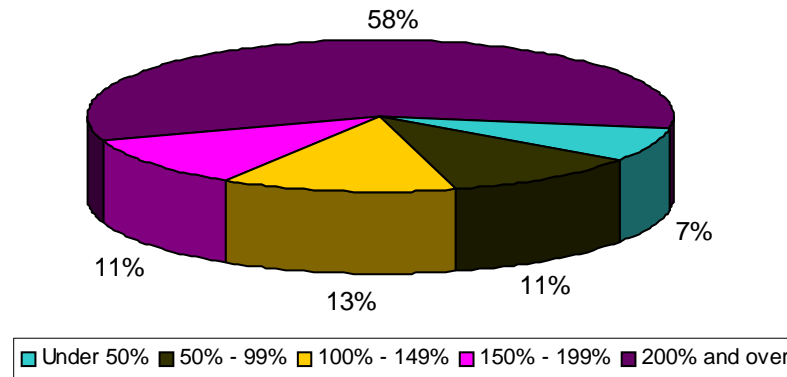
Bernalillo

	All	Hispanic	Percent Hispanic
Total population	556,678	233,527	42%
Adult population	416,058	159,152	38%
Population under 18 years	140,620	74,375	53%
Percent under 18 years	25%	32%	N/A
Population under 5 years	38,297	21,772	57%
Population 5 to 9 years	38,834	20,564	53%
Population 10 to 14 years	40,342	20,498	51%
Population 15 to 17 years	23,147	11,541	50%

Percent of All Children Living in Families That Are Poor

	All children combined	Children below the poverty level	Percent below the poverty level
Children living with their own families	76,965	11,844	15%
living with a married couple	49,858	3,637	7%
living with a single father	7,421	1,540	21%
living with a single mother	19,686	6,667	34%

Income Level for All Children (Hispanic and Non-Hispanic) by Federal Poverty Level



	Hispanic Children	All Children
Economic Security		
Percent of children in poverty	24%	18%
Percent of children with parents out of the labor force	15%	11%
Education		
Percent of 3- to 4-year olds in preschool	N/A	44%
Percent of 18- to 24-year olds enrolled in school	N/A	44%
Percent of 18- to 24-year olds with a HS diploma or more	70%	84%
Teens		
Percent of 16- to 19-year olds not in school, military, or working	14%	11%
Percent of 16- to 19-year olds not in school or HS graduate	17%	12%
Disability		
Percent of 5- to 15-year olds with a disability	N/A	6%
Percent of disabled 5- to 15-year olds living in poverty	N/A	27%
Language		
Percent of 5- to 17-year olds speaking a language other than English	37%	24%
Percent of 5- to 17-year olds speaking English "very well"	24%	16%
Percent of linguistically isolated households*	N/A	5%
Housing		
Percent of children living in owner-occupied homes	N/A	32%
Percent of households with telephone access	96%	97%

*Census definition: family members 14 years and older who do not speak English well

Source: 2000 Census, U.S. Census Bureau (factfinder.census.gov)

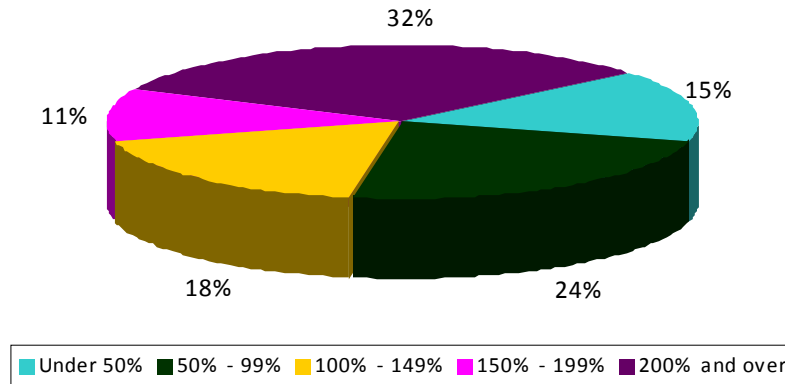
Catron

	All	Hispanic	Percent Hispanic
Total population	3543	668	19%
Adult population	2804	502	18%
Population under 18 years	739	166	22%
Percent under 18 years	21%	25%	N/A
Population under 5 years	149	37	25%
Population 5 to 9 years	199	42	21%
Population 10 to 14 years	228	54	24%
Population 15 to 17 years	163	33	20%

Percent of All Children Living in Families That Are Poor

	All children combined	Children below the poverty level	Percent below the poverty level
All children living with their own families	394	129	33%
living with a married couple	293	69	24%
living with a single father	18	2	11%
living with a single mother	83	58	70%

Income Level for All Children (Hispanic and Non-Hispanic) by Federal Poverty Level



	Hispanic Children	All Children
Economic Security		
Percent of children in poverty	20%	39%
Percent of children with parents out of the labor force	5%	11%
Education		
Percent of 3- to 4-year olds in preschool	N/A	46%
Percent of 18- to 24-year olds enrolled in school	N/A	28%
Percent of 18- to 24-year olds with a HS diploma or more	59%	78%
Teens		
Percent of 16- to 19-year olds not in school, military, or working	9%	20%
Percent of 16- to 19-year olds not in school or HS graduate	0%	16%
Disability		
Percent of 5- to 15-year olds with a disability	N/A	5%
Percent of disabled 5- to 15-year olds living in poverty	N/A	83%
Language		
Percent of 5- to 17-year olds speaking a language other than English	36%	13%
Percent of 5- to 17-year olds speaking English "very well"	34%	10%
Percent of linguistically isolated households*	N/A	3%
Housing		
Percent of children living in owner-occupied homes	N/A	21%
Percent of households with telephone access	90%	90%

*Census definition: family members 14 years and older who do not speak English well

Source: 2000 Census, U.S. Census Bureau (factfinder.census.gov)

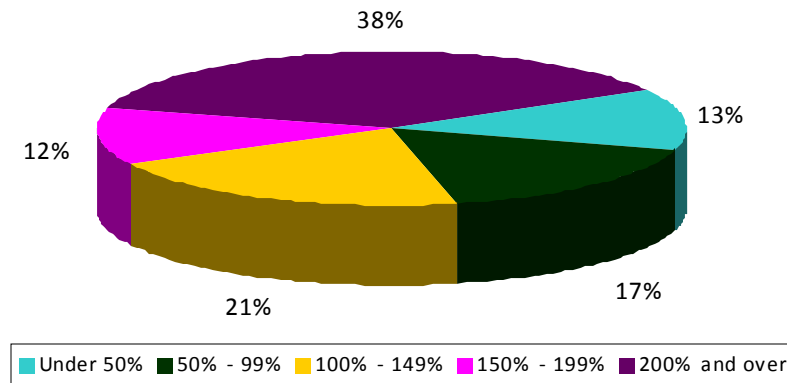
Chaves

	All	Hispanic	Percent Hispanic
Total population	61,382	27,016	44%
Adult population	43,570	16,770	38%
Population under 18 years	17,812	10,246	58%
Percent under 18 years	29%	38%	N/A
Population under 5 years	4,404	2,719	62%
Population 5 to 9 years	4,921	2,834	58%
Population 10 to 14 years	5,064	2,812	56%
Population 15 to 17 years	3,423	1,881	55%

Percent of All Children Living in Families That Are Poor

	All children combined	Children below the poverty level	Percent below the poverty level
All children living with their own families	8,896	2,319	26%
living with a married couple	5,877	1,037	18%
living with a single father	845	222	26%
living with a single mother	2,174	1,060	49%

Income Level for All Children (Hispanic and Non-Hispanic) by Federal Poverty Level



	Hispanic Children	All Children
Economic Security		
Percent of children in poverty	29%	38%
Percent of children with parents out of the labor force	22%	17%
Education		
Percent of 3- to 4-year olds in preschool	N/A	42%
Percent of 18- to 24-year olds enrolled in school	N/A	39%
Percent of 18- to 24-year olds with a HS diploma or more	51%	73%
Teens		
Percent of 16- to 19-year olds not in school, military, or working	13%	12%
Percent of 16- to 19-year olds not in school or HS graduate	19%	14%
Disability		
Percent of 5- to 15-year olds with a disability	N/A	7%
Percent of disabled 5- to 15-year olds living in poverty	N/A	38%
Language		
Percent of 5- to 17-year olds speaking a language other than English	57%	34%
Percent of 5- to 17-year olds speaking English "very well"	40%	24%
Percent of linguistically isolated households*	N/A	7%
Housing		
Percent of children living in owner-occupied homes	N/A	34%
Percent of households with telephone access	91%	95%

*Census definition: family members 14 years and older who do not speak English well

Source: 2000 Census, U.S. Census Bureau (factfinder.census.gov)

Unless otherwise noted, all Tables are from Summary File 3

*Census definition: family members 14 years and older who do not speak English well

Source: 2000 Census, U.S. Census Bureau (factfinder.census.gov)

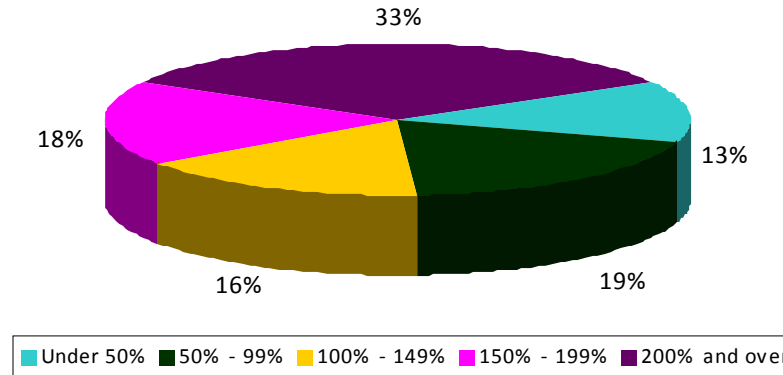
Cibola

	All	Hispanic	Percent Hispanic
Total population	25,595	8,441	33%
Adult population	17,743	5,788	33%
Population under 18 years	7,852	2,653	34%
Percent under 18 years	31%	31%	N/A
Population under 5 years	2,010	673	33%
Population 5 to 9 years	2,264	786	35%
Population 10 to 14 years	2,288	810	35%
Population 15 to 17 years	1,290	384	30%

Percent of All Children Living in Families That Are Poor

	All children combined	Children below the poverty level	Percent below the poverty level
All children living with their own families	3,854	1,097	28%
living with a married couple	2,377	437	18%
living with a single father	423	208	49%
living with a single mother	1,054	452	43%

Income Level for All Children (Hispanic and Non-Hispanic) by Federal Poverty Level



	Hispanic Children	All Children
Economic Security		
Percent of children in poverty	36%	32%
Percent of children with parents out of the labor force	12%	19%
Education		
Percent of 3- to 4-year olds in preschool	N/A	51%
Percent of 18- to 24-year olds enrolled in school	N/A	29%
Percent of 18- to 24-year olds with a HS diploma or more	68%	75%
Teens		
Percent of 16- to 19-year olds not in school, military, or working	19%	17%
Percent of 16- to 19-year olds not in school or HS graduate	12%	10%
Disability		
Percent of 5- to 15-year olds with a disability	N/A	3%
Percent of disabled 5- to 15-year olds living in poverty	N/A	29%
Language		
Percent of 5- to 17-year olds speaking a language other than English	31%	26%
Percent of 5- to 17-year olds speaking English "very well"	21%	17%
Percent of linguistically isolated households*	N/A	7%
Housing		
Percent of children living in owner-occupied homes	N/A	36%
Percent of households with telephone access	94%	88%

*Census definition: family members 14 years and older who do not speak English well

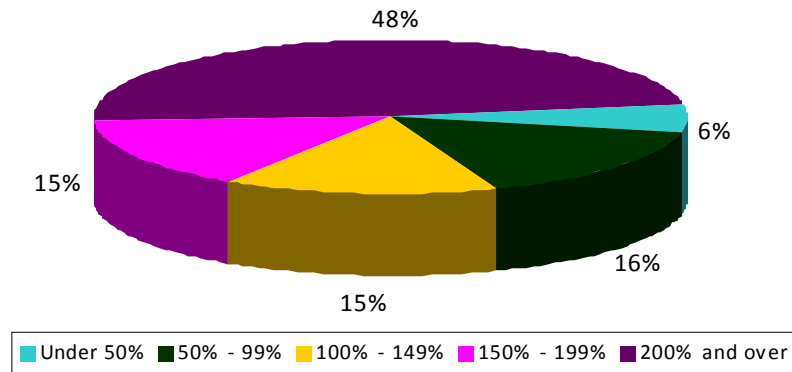
Source: 2000 Census, U.S. Census Bureau (factfinder.census.gov)

	All	Hispanic	Percent Hispanic
Total population	14,189	6,742	48%
Adult population	10,628	4,632	44%
Population under 18 years	3,561	2,110	59%
Percent under 18 years	25%	31%	N/A
Population under 5 years	766	491	64%
Population 5 to 9 years	1,072	603	56%
Population 10 to 14 years	997	577	58%
Population 15 to 17 years	726	439	60%

Percent of All Children Living in Families That Are Poor

	All children combined	Children below the poverty level	Percent below the poverty level
All children living with their own families	1,868	368	20%
living with a married couple	1,246	120	10%
living with a single father	231	68	29%
living with a single mother	391	180	46%

Income Level for All Children (Hispanic and Non-Hispanic) by Federal Poverty Level



	Hispanic Children	All Children
Economic Security		
Percent of children in poverty	29%	21%
Percent of children with parents out of the labor force	9%	6%
Education		
Percent of 3- to 4-year olds in preschool	N/A	35%
Percent of 18- to 24-year olds enrolled in school	N/A	43%
Percent of 18- to 24-year olds with a HS diploma or more	68%	81%
Teens		
Percent of 16- to 19-year olds not in school, military, or working	19%	16%
Percent of 16- to 19-year olds not in school or HS graduate	18%	15%
Disability		
Percent of 5- to 15-year olds with a disability	N/A	5%
Percent of disabled 5- to 15-year olds living in poverty	N/A	24%
Language		
Percent of 5- to 17-year olds speaking a language other than English	22%	14%
Percent of 5- to 17-year olds speaking English "very well"	17%	10%
Percent of linguistically isolated households*	N/A	4%
Housing		
Percent of children living in owner-occupied homes	N/A	27%
Percent of households with telephone access	94%	97%

*Census definition: family members 14 years and older who do not speak English well

Source: 2000 Census, U.S. Census Bureau (factfinder.census.gov)

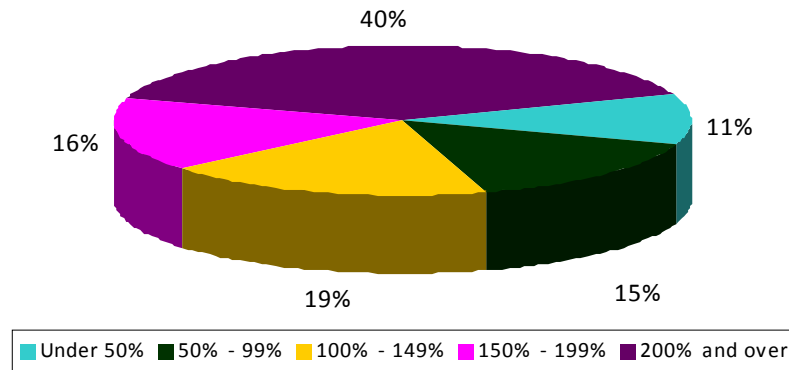
Curry

	All	Hispanic	Percent Hispanic
Total population	45,044	13,683	30%
Adult population	31,490	8,252	26%
Population under 18 years	13,554	5,431	40%
Percent under 18 years	30%	40%	N/A
Population under 5 years	3,715	1,570	42%
Population 5 to 9 years	4,057	1,697	42%
Population 10 to 14 years	3,597	1,407	39%
Population 15 to 17 years	2,185	757	35%

Percent of All Children Living in Families That Are Poor

	All children combined	Children below the poverty level	Percent below the poverty level
All children living with their own families	6,920	1,546	22%
living with a married couple	4,656	613	13%
living with a single father	565	142	25%
living with a single mother	1,699	791	47%

Income Level for All Children (Hispanic and Non-Hispanic) by Federal Poverty Level



	Hispanic Children	All Children
Economic Security		
Percent of children in poverty	35%	25%
Percent of children with parents out of the labor force	18%	12%
Education		
Percent of 3- to 4-year olds in preschool	N/A	39%
Percent of 18- to 24-year olds enrolled in school	N/A	32%
Percent of 18- to 24-year olds with a HS diploma or more	57%	78%
Teens		
Percent of 16- to 19-year olds not in school, military, or working	22%	12%
Percent of 16- to 19-year olds not in school or HS graduate	20%	10%
Disability		
Percent of 5- to 15-year olds with a disability	N/A	8%
Percent of disabled 5- to 15-year olds living in poverty	N/A	38%
Language		
Percent of 5- to 17-year olds speaking a language other than English	39%	18%
Percent of 5- to 17-year olds speaking English "very well"	29%	13%
Percent of linguistically isolated households*	N/A	4%
Housing		
Percent of children living in owner-occupied homes	N/A	32%
Percent of households with telephone access	94%	96%

*Census definition: family members 14 years and older who do not speak English well

Source: 2000 Census, U.S. Census Bureau (factfinder.census.gov)

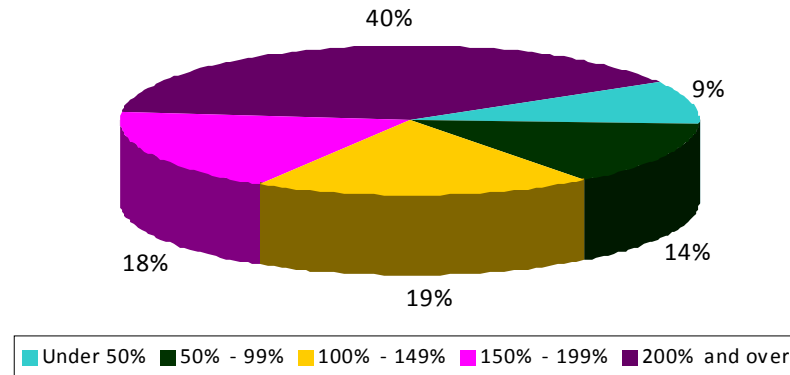
De Baca

	All	Hispanic	Percent Hispanic
Total population	2,240	775	35%
Adult population	1,704	551	32%
Population under 18 years	536	224	42%
Percent under 18 years	24%	29%	N/A
Population under 5 years	112	48	43%
Population 5 to 9 years	139	67	48%
Population 10 to 14 years	170	68	40%
Population 15 to 17 years	115	41	36%

Percent of All Children Living in Families That Are Poor

	All children combined	Children below the poverty level	Percent below the poverty level
All children living with their own families	259	65	25%
living with a married couple	199	28	14%
living with a single father	6	2	33%
living with a single mother	54	35	65%

Income Level for All Children (Hispanic and Non-Hispanic) by Federal Poverty Level



	Hispanic Children	All Children
Economic Security		
Percent of children in poverty	35%	23%
Percent of children with parents out of the labor force	11%	7%
Education		
Percent of 3- to 4-year olds in preschool	N/A	67%
Percent of 18- to 24-year olds enrolled in school	N/A	40%
Percent of 18- to 24-year olds with a HS diploma or more	48%	72%
Teens		
Percent of 16- to 19-year olds not in school, military, or working	11%	6%
Percent of 16- to 19-year olds not in school or HS graduate	11%	4%
Disability		
Percent of 5- to 15-year olds with a disability	N/A	5%
Percent of disabled 5- to 15-year olds living in poverty	N/A	35%
Language		
Percent of 5- to 17-year olds speaking a language other than English	59%	25%
Percent of 5- to 17-year olds speaking English "very well"	52%	23%
Percent of linguistically isolated households*	N/A	9%
Housing		
Percent of children living in owner-occupied homes	N/A	25%
Percent of households with telephone access	93%	97%

*Census definition: family members 14 years and older who do not speak English well

Source: 2000 Census, U.S. Census Bureau (factfinder.census.gov)

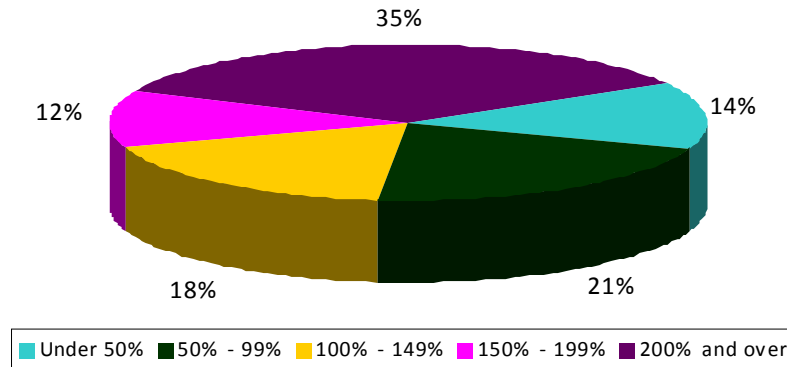
Doña Ana

	All	Hispanic	Percent Hispanic
Total population	174,682	110,807	63%
Adult population	122,851	71,165	58%
Population under 18 years	51,831	39,642	76%
Percent under 18 years	30%	36%	N/A
Population under 5 years	13,501	10,545	78%
Population 5 to 9 years	14,667	11,292	77%
Population 10 to 14 years	15,351	11,528	75%
Population 15 to 17 years	8,312	6,277	76%

Percent of All Children Living in Families That Are Poor

	All children combined	Children below the poverty level	Percent below the poverty level
All children living with their own families	25,266	7,293	29%
living with a married couple	16,902	3,408	20%
living with a single father	1,867	628	34%
living with a single mother	6,497	3,257	50%

Income Level for All Children (Hispanic and Non-Hispanic) by Federal Poverty Level



	Hispanic Children	All Children
Economic Security		
Percent of children in poverty	40%	35%
Percent of children with parents out of the labor force	19%	17%
Education		
Percent of 3- to 4-year olds in preschool	N/A	34%
Percent of 18- to 24-year olds enrolled in school	N/A	55%
Percent of 18- to 24-year olds with a HS diploma or more	54%	70%
Teens		
Percent of 16- to 19-year olds not in school, military, or working	11%	9%
Percent of 16- to 19-year olds not in school or HS graduate	14%	11%
Disability		
Percent of 5- to 15-year olds with a disability	N/A	6%
Percent of disabled 5- to 15-year olds living in poverty	N/A	46%
Language		
Percent of 5- to 17-year olds speaking a language other than English	72%	57%
Percent of 5- to 17-year olds speaking English "very well"	44%	35%
Percent of linguistically isolated households*	N/A	11%
Housing		
Percent of children living in owner-occupied homes	N/A	38%
Percent of households with telephone access	94%	96%

*Census definition: family members 14 years and older who do not speak English well

Source: 2000 Census, U.S. Census Bureau (factfinder.census.gov)

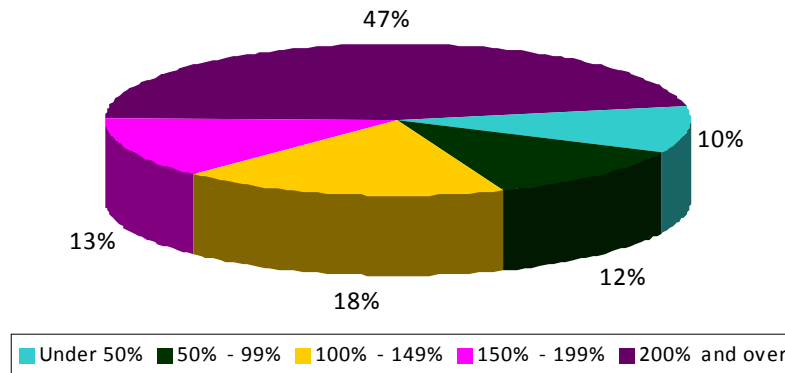
Eddy

	All	Hispanic	Percent Hispanic
Total population	51,658	20,130	39%
Adult population	36,823	12,687	34%
Population under 18 years	14,835	7,443	50%
Percent under 18 years	29%	37%	N/A
Population under 5 years	3,706	1,988	54%
Population 5 to 9 years	4,164	2,164	52%
Population 10 to 14 years	4,272	2,078	49%
Population 15 to 17 years	2,693	1,213	45%

Percent of All Children Living in Families That Are Poor

	All children combined	Children below the poverty level	Percent below the poverty level
All children living with their own families	7,614	1,448	19%
living with a married couple	5,274	570	11%
living with a single father	697	227	33%
living with a single mother	1,643	651	40%

Income Level for All Children (Hispanic and Non-Hispanic) by Federal Poverty Level



	Hispanic Children	All Children
Economic Security		
Percent of children in poverty	30%	22%
Percent of children with parents out of the labor force	15%	11%
Education		
Percent of 3- to 4-year olds in preschool	N/A	46%
Percent of 18- to 24-year olds enrolled in school	N/A	34%
Percent of 18- to 24-year olds with a HS diploma or more	57%	75%
Teens		
Percent of 16- to 19-year olds not in school, military, or working	16%	12%
Percent of 16- to 19-year olds not in school or HS graduate	14%	12%
Disability		
Percent of 5- to 15-year olds with a disability	N/A	7%
Percent of disabled 5- to 15-year olds living in poverty	N/A	25%
Language		
Percent of 5- to 17-year olds speaking a language other than English	51%	27%
Percent of 5- to 17-year olds speaking English "very well"	37%	20%
Percent of linguistically isolated households*	N/A	6%
Housing		
Percent of children living in owner-occupied homes	N/A	34%
Percent of households with telephone access	91%	95%

*Census definition: family members 14 years and older who do not speak English well

Source: 2000 Census, U.S. Census Bureau (factfinder.census.gov)

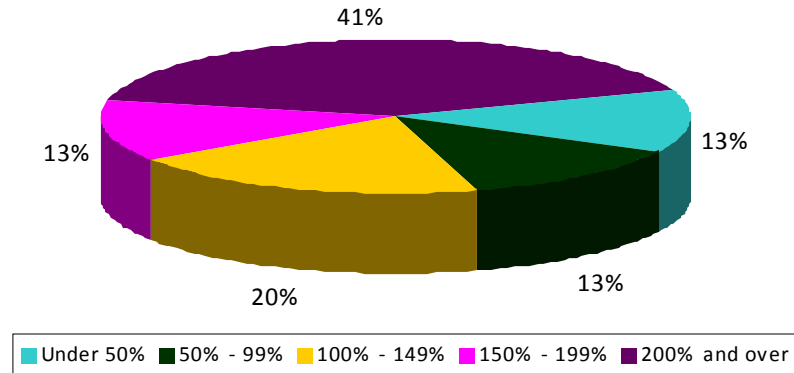
Grant

	All	Hispanic	Percent Hispanic
Total population	31,002	15,153	49%
Adult population	22,884	10,235	45%
Population under 18 years	8,118	4,918	61%
Percent under 18 years	26%	32%	N/A
Population under 5 years	2,091	1,347	64%
Population 5 to 9 years	2,128	1,309	62%
Population 10 to 14 years	2,400	1,386	58%
Population 15 to 17 years	1,499	876	58%

Percent of All Children Living in Families That Are Poor

	All children combined	Children below the poverty level	Percent below the poverty level
All children living with their own families	4,209	1,010	24%
living with a married couple	2,646	335	13%
living with a single father	334	77	23%
living with a single mother	1,229	598	49%

Income Level for All Children (Hispanic and Non-Hispanic) by Federal Poverty Level



	Hispanic Children	All Children
Economic Security		
Percent of children in poverty	29%	26%
Percent of children with parents out of the labor force	16%	14%
Education		
Percent of 3- to 4-year olds in preschool	N/A	32%
Percent of 18- to 24-year olds enrolled in school	N/A	43%
Percent of 18- to 24-year olds with a HS diploma or more	66%	79%
Teens		
Percent of 16- to 19-year olds not in school, military, or working	16%	13%
Percent of 16- to 19-year olds not in school or HS graduate	12%	9%
Disability		
Percent of 5- to 15-year olds with a disability	N/A	5%
Percent of disabled 5- to 15-year olds living in poverty	N/A	32%
Language		
Percent of 5- to 17-year olds speaking a language other than English	37%	24%
Percent of 5- to 17-year olds speaking English "very well"	29%	19%
Percent of linguistically isolated households*	N/A	6%
Housing		
Percent of children living in owner-occupied homes	N/A	28%
Percent of households with telephone access	94%	95%

*Census definition: family members 14 years and older who do not speak English well

Source: 2000 Census, U.S. Census Bureau (factfinder.census.gov)

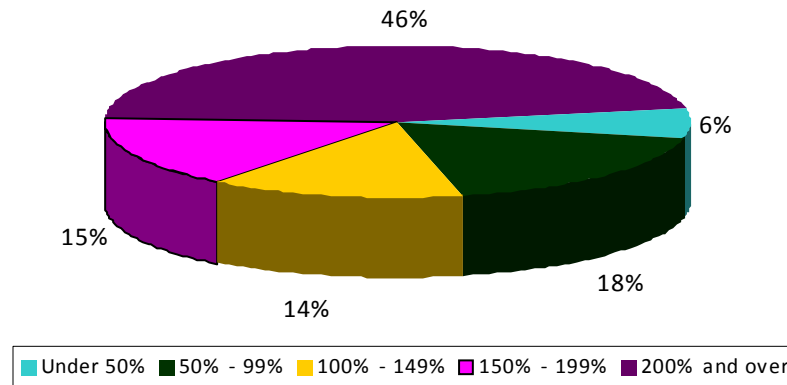
Guadalupe

	All	Hispanic	Percent Hispanic
Total population	4,680	3,792	81%
Adult population	3,537	2,783	79%
Population under 18 years	1,143	1,009	88%
Percent under 18 years	24%	27%	N/A
Population under 5 years	256	223	87%
Population 5 to 9 years	267	240	90%
Population 10 to 14 years	398	342	86%
Population 15 to 17 years	222	204	92%

Percent of All Children Living in Families That Are Poor

	All children combined	Children below the poverty level	Percent below the poverty level
All children living with their own families	648	152	23%
living with a married couple	397	43	11%
living with a single father	80	25	31%
living with a single mother	171	84	49%

Income Level for All Children (Hispanic and Non-Hispanic) by Federal Poverty Level



	Hispanic Children	All Children
Economic Security		
Percent of children in poverty	23%	24%
Percent of children with parents out of the labor force	21%	19%
Education		
Percent of 3- to 4-year olds in preschool	N/A	32%
Percent of 18- to 24-year olds enrolled in school	N/A	27%
Percent of 18- to 24-year olds with a HS diploma or more	63%	68%
Teens		
Percent of 16- to 19-year olds not in school, military, or working	14%	14%
Percent of 16- to 19-year olds not in school or HS graduate	8%	8%
Disability		
Percent of 5- to 15-year olds with a disability	N/A	2%
Percent of disabled 5- to 15-year olds living in poverty	N/A	56%
Language		
Percent of 5- to 17-year olds speaking a language other than English	53%	49%
Percent of 5- to 17-year olds speaking English "very well"	46%	42%
Percent of linguistically isolated households*	N/A	12%
Housing		
Percent of children living in owner-occupied homes	N/A	33%
Percent of households with telephone access	94%	94%

*Census definition: family members 14 years and older who do not speak English well

Source: 2000 Census, U.S. Census Bureau (factfinder.census.gov)

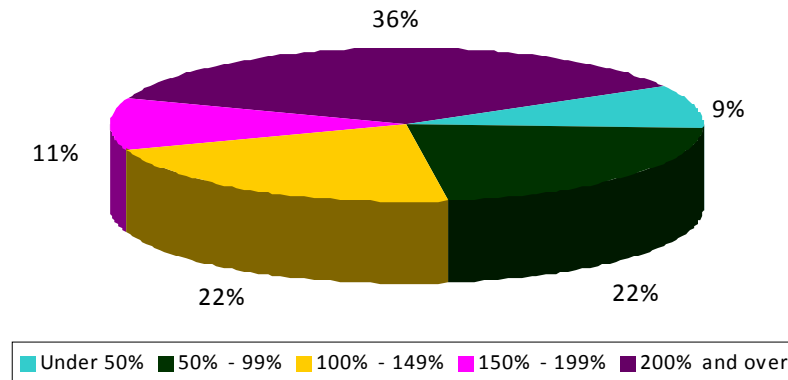
Harding

	All	Hispanic	Percent Hispanic
Total population	810	370	46%
Adult population	647	290	45%
Population under 18 years	163	80	49%
Percent under 18 years	20%	22%	N/A
Population under 5 years	24	16	67%
Population 5 to 9 years	24	10	42%
Population 10 to 14 years	55	24	44%
Population 15 to 17 years	60	30	50%

Percent of All Children Living in Families That Are Poor

	All children combined	Children below the poverty level	Percent below the poverty level
All children living with their own families	88	27	31%
living with a married couple	67	14	21%
living with a single father	4	0	0%
living with a single mother	17	13	76%

Income Level for All Children (Hispanic and Non-Hispanic) by Federal Poverty Level



	Hispanic Children	All Children
Economic Security		
Percent of children in poverty	16%	31%
Percent of children with parents out of the labor force	16%	8%
Education		
Percent of 3- to 4-year olds in preschool	N/A	60%
Percent of 18- to 24-year olds enrolled in school	N/A	42%
Percent of 18- to 24-year olds with a HS diploma or more	57%	72%
Teens		
Percent of 16- to 19-year olds not in school, military, or working	0%	7%
Percent of 16- to 19-year olds not in school or HS graduate	0%	7%
Disability		
Percent of 5- to 15-year olds with a disability	N/A	7%
Percent of disabled 5- to 15-year olds living in poverty	N/A	0%
Language		
Percent of 5- to 17-year olds speaking a language other than English	28%	13%
Percent of 5- to 17-year olds speaking English "very well"	27%	12%
Percent of linguistically isolated households*	N/A	10%
Housing		
Percent of children living in owner-occupied homes	N/A	18%
Percent of households with telephone access	92%	94%

*Census definition: family members 14 years and older who do not speak English well

Source: 2000 Census, U.S. Census Bureau (factfinder.census.gov)

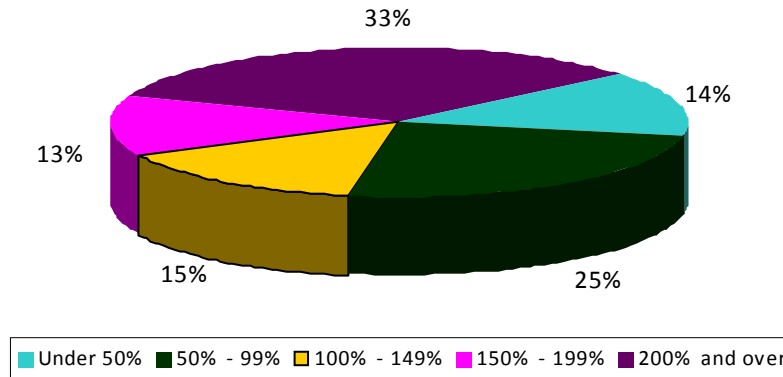
Hidalgo

	All	Hispanic	Percent Hispanic
Total population	5,932	3,337	56%
Adult population	4,048	2,117	52%
Population under 18 years	1,884	1,220	65%
Percent under 18 years	32%	37%	N/A
Population under 5 years	459	324	71%
Population 5 to 9 years	560	407	73%
Population 10 to 14 years	518	276	53%
Population 15 to 17 years	347	213	61%

Percent of All Children Living in Families That Are Poor

	All children combined	Children below the poverty level	Percent below the poverty level
All children living with their own families	882	278	32%
living with a married couple	579	113	20%
living with a single father	61	26	43%
living with a single mother	242	139	57%

Income Level for All Children (Hispanic and Non-Hispanic) by Federal Poverty Level



	Hispanic Children	All Children
Economic Security		
Percent of children in poverty	39%	51%
Percent of children with parents out of the labor force	26%	19%
Education		
Percent of 3- to 4-year olds in preschool	N/A	39%
Percent of 18- to 24-year olds enrolled in school	N/A	26%
Percent of 18- to 24-year olds with a HS diploma or more	57%	69%
Teens		
Percent of 16- to 19-year olds not in school, military, or working	11%	9%
Percent of 16- to 19-year olds not in school or HS graduate	11%	8%
Disability		
Percent of 5- to 15-year olds with a disability	N/A	4%
Percent of disabled 5- to 15-year olds living in poverty	N/A	78%
Language		
Percent of 5- to 17-year olds speaking a language other than English	44%	30%
Percent of 5- to 17-year olds speaking English "very well"	26%	19%
Percent of linguistically isolated households*	N/A	9%
Housing		
Percent of children living in owner-occupied homes	N/A	32%
Percent of households with telephone access	86%	89%

*Census definition: family members 14 years and older who do not speak English well

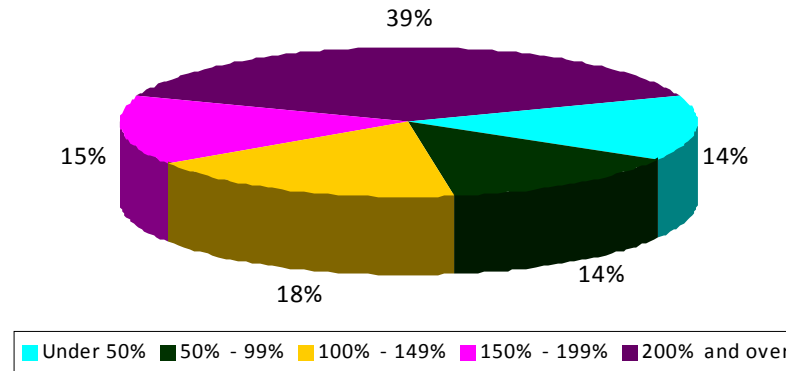
Source: 2000 Census, U.S. Census Bureau (factfinder.census.gov)

	All	Hispanic	Percent Hispanic
Total population	55,511	21,973	40%
Adult population	38,782	13,203	34%
Population under 18 years	16,729	8,770	52%
Percent under 18 years	30%	40%	N/A
Population under 5 years	4,245	2,408	57%
Population 5 to 9 years	4,519	2,374	53%
Population 10 to 14 years	4,956	2,454	50%
Population 15 to 17 years	3,009	1,534	51%

Percent of All Children Living in Families That Are Poor

	All children combined	Children below the poverty level	Percent below the poverty level
All children living with their own families	8,455	2,036	24%
living with a married couple	6,053	832	14%
living with a single father	700	245	35%
living with a single mother	1,702	959	56%

Income Level for All Children (Hispanic and Non-Hispanic) by Federal Poverty Level



	Hispanic Children	All Children
Economic Security		
Percent of children in poverty	38%	28%
Percent of children with parents out of the labor force	24%	17%
Education		
Percent of 3- to 4-year olds in preschool	N/A	31%
Percent of 18- to 24-year olds enrolled in school	N/A	39%
Percent of 18- to 24-year olds with a HS diploma or more	39%	67%
Teens		
Percent of 16- to 19-year olds not in school, military, or working	14%	13%
Percent of 16- to 19-year olds not in school or HS graduate	13%	11%
Disability		
Percent of 5- to 15-year olds with a disability	N/A	6%
Percent of disabled 5- to 15-year olds living in poverty	N/A	43%
Language		
Percent of 5- to 17-year olds speaking a language other than English	68%	37%
Percent of 5- to 17-year olds speaking English "very well"	49%	27%
Percent of linguistically isolated households*	N/A	6%
Housing		
Percent of children living in owner-occupied homes	N/A	37%
Percent of households with telephone access	89%	94%

*Census definition: family members 14 years and older who do not speak English well

Source: 2000 Census, U.S. Census Bureau (factfinder.census.gov)

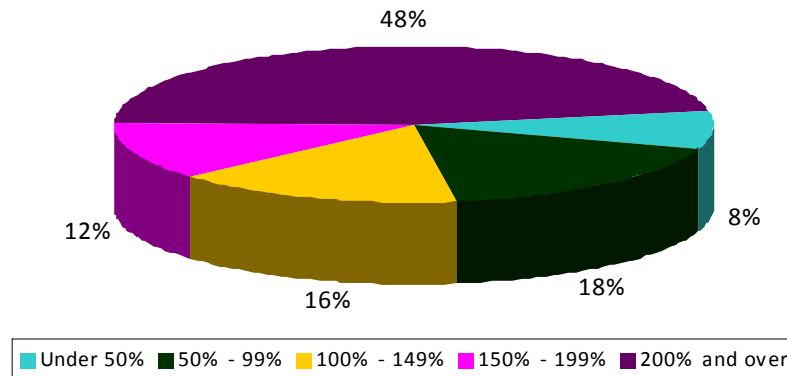
Lincoln

	All	Hispanic	Percent Hispanic
Total population	19,411	4,978	26%
Adult population	15,006	3,308	22%
Population under 18 years	4,405	1,670	38%
Population under 5 years	23%	34%	N/A
Population 5 to 9 years	963	401	42%
Population 10 to 14 years	1,136	500	44%
Population 15 to 17 years	1,499	484	32%
15 to 17 years	807	285	35%

Percent of All Children Living in Families That Are Poor

	All children combined	Children below the poverty level	Percent below the poverty level
All children living with their own families	2,360	477	20%
living with a married couple	1,590	227	14%
living with a single father	227	41	18%
living with a single mother	543	209	38%

Income Level for All Children (Hispanic and Non-Hispanic) by Federal Poverty Level



	Hispanic Children	All Children
Economic Security		
Percent of children in poverty	33%	25%
Percent of children with parents out of the labor force	15%	11%
Education		
Percent of 3- to 4-year olds in preschool	N/A	34%
Percent of 18- to 24-year olds enrolled in school	N/A	32%
Percent of 18- to 24-year olds with a HS diploma or more	62%	85%
Teens		
Percent of 16- to 19-year olds not in school, military, or working	14%	9%
Percent of 16- to 19-year olds not in school or HS graduate	8%	9%
Disability		
Percent of 5- to 15-year olds with a disability	N/A	3%
Percent of disabled 5- to 15-year olds living in poverty	N/A	17%
Language		
Percent of 5- to 17-year olds speaking a language other than English	44%	18%
Percent of 5- to 17-year olds speaking English "very well"	30%	13%
Percent of linguistically isolated households*	N/A	4%
Housing		
Percent of children living in owner-occupied homes	N/A	24%
Percent of households with telephone access	86%	95%

*Census definition: family members 14 years and older who do not speak English well

Source: 2000 Census, U.S. Census Bureau (factfinder.census.gov)

Unless otherwise noted, all Tables are from Summary File 3

*Census definition: family members 14 years and older who do not speak English well

Source: 2000 Census, U.S. Census Bureau (factfinder.census.gov)

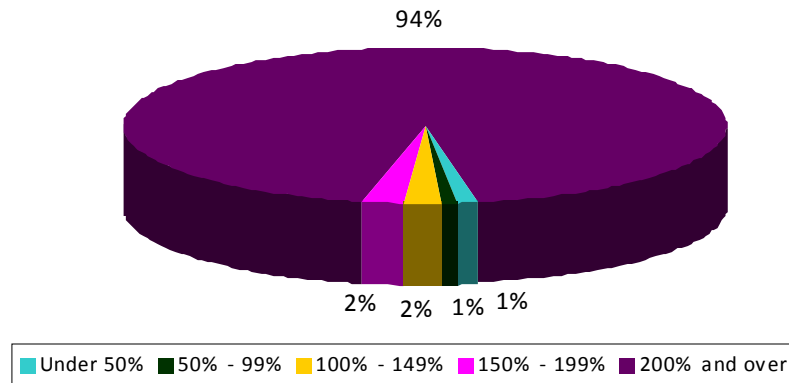
Los Alamos

	All	Hispanic	Percent Hispanic
Total population	18,343	2,158	12%
Adult population	13,594	1,431	11%
Population under 18 years	4,749	727	15%
Percent under 18 years	26%	34%	N/A
Population under 5 years	1,068	219	21%
Population 5 to 9 years	1,377	225	16%
Population 10 to 14 years	1,477	158	11%
Population 15 to 17 years	827	125	15%

Percent of All Children Living in Families That Are Poor

	All children combined	Children below the poverty level	Percent below the poverty level
All children living with their own families	2,588	52	2%
living with a married couple	2,146	0	0%
living with a single father	157	24	15%
living with a single mother	285	28	10%

Income Level for All Children (Hispanic and Non-Hispanic) by Federal Poverty Level



	Hispanic Children	All Children
Economic Security		
Percent of children in poverty	2%	2%
Percent of children with parents out of the labor force	6%	1%
Education		
Percent of 3- to 4-year olds in preschool	N/A	54%
Percent of 18- to 24-year olds enrolled in school	N/A	60%
Percent of 18- to 24-year olds with a HS diploma or more	86%	96%
Teens		
Percent of 16- to 19-year olds not in school, military, or working	4%	4%
Percent of 16- to 19-year olds not in school or HS graduate	6%	5%
Disability		
Percent of 5- to 15-year olds with a disability	N/A	4%
Percent of disabled 5- to 15-year olds living in poverty	N/A	8%
Language		
Percent of 5- to 17-year olds speaking a language other than English	13%	7%
Percent of 5- to 17-year olds speaking English "very well"	10%	5%
Percent of linguistically isolated households*	N/A	2%
Housing		
Percent of children living in owner-occupied homes	N/A	35%
Percent of households with telephone access	97%	99%

*Census definition: family members 14 years and older who do not speak English well

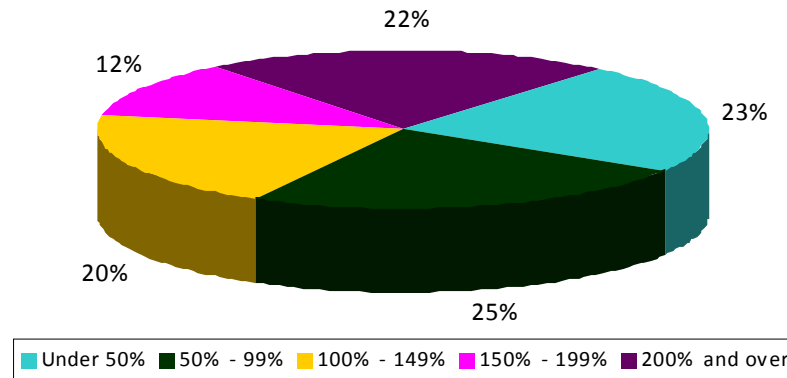
Source: 2000 Census, U.S. Census Bureau (factfinder.census.gov)

	All	Hispanic	Percent Hispanic
Total population	25,016	14,478	58%
Adult population	17,535	8,724	50%
Population under 18 years	7,481	5,754	77%
Percent under 18 years	30%	40%	N/A
Population under 5 years	1,886	1,498	79%
Population 5 to 9 years	2,211	1,713	77%
Population 10 to 14 years	2,014	1,569	78%
Population 15 to 17 years	1,370	974	71%

Percent of All Children Living in Families That Are Poor

	All children combined	Children below the poverty level	Percent below the poverty level
All children living with their own families	3,588	1,432	40%
living with a married couple	2,354	676	29%
living with a single father	269	139	52%
living with a single mother	965	617	64%

Income Level for All Children (Hispanic and Non-Hispanic) by Federal Poverty Level



	Hispanic Children	All Children
Economic Security		
Percent of children in poverty	52%	47%
Percent of children with parents out of the labor force	22%	20%
Education		
Percent of 3- to 4-year olds in preschool	N/A	28%
Percent of 18- to 24-year olds enrolled in school	N/A	29%
Percent of 18- to 24-year olds with a HS diploma or more	38%	60%
Teens		
Percent of 16- to 19-year olds not in school, military, or working	19%	17%
Percent of 16- to 19-year olds not in school or HS graduate	19%	18%
Disability		
Percent of 5- to 15-year olds with a disability	N/A	5%
Percent of disabled 5- to 15-year olds living in poverty	N/A	67%
Language		
Percent of 5- to 17-year olds speaking a language other than English	73%	57%
Percent of 5- to 17-year olds speaking English "very well"	47%	37%
Percent of linguistically isolated households*	N/A	12%
Housing		
Percent of children living in owner-occupied homes	N/A	30%
Percent of households with telephone access	86%	89%

*Census definition: family members 14 years and older who do not speak English well

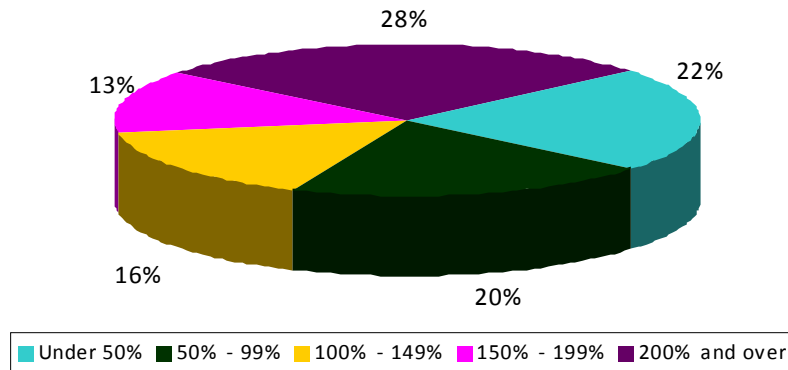
Source: 2000 Census, U.S. Census Bureau (factfinder.census.gov)

	All	Hispanic	Percent Hispanic
Total population	74,798	9,303	12%
Adult population	46,430	5,712	12%
Population under 18 years	28,368	3,591	13%
Percent under 18 years	38%	39%	N/A
Population under 5 years	6,925	1,105	16%
Population 5 to 9 years	8,394	957	11%
Population 10 to 14 years	8,195	904	11%
Population 15 to 17 years	4,854	625	13%

Percent of All Children Living in Families That Are Poor

	All children combined	Children below the poverty level	Percent below the poverty level
All children living with their own families	11,630	4,268	37%
living with a married couple	6,870	1,996	29%
living with a single father	1,208	538	45%
living with a single mother	3,552	1,734	49%

Income Level for All Children (Hispanic and Non-Hispanic) by Federal Poverty Level



	Hispanic Children	All Children
Economic Security		
Percent of children in poverty	33%	43%
Percent of children with parents out of the labor force	18%	25%
Education		
Percent of 3- to 4-year olds in preschool	N/A	51%
Percent of 18- to 24-year olds enrolled in school	N/A	38%
Percent of 18- to 24-year olds with a HS diploma or more	67%	65%
Teens		
Percent of 16- to 19-year olds not in school, military, or working	16%	14%
Percent of 16- to 19-year olds not in school or HS graduate	13%	11%
Disability		
Percent of 5- to 15-year olds with a disability	N/A	4%
Percent of disabled 5- to 15-year olds living in poverty	N/A	36%
Language		
Percent of 5- to 17-year olds speaking a language other than English	22%	47%
Percent of 5- to 17-year olds speaking English "very well"	17%	32%
Percent of linguistically isolated households*	N/A	14%
Housing		
Percent of children living in owner-occupied homes	N/A	44%
Percent of households with telephone access	94%	68%

*Census definition: family members 14 years and older who do not speak English well

Source: 2000 Census, U.S. Census Bureau (factfinder.census.gov)

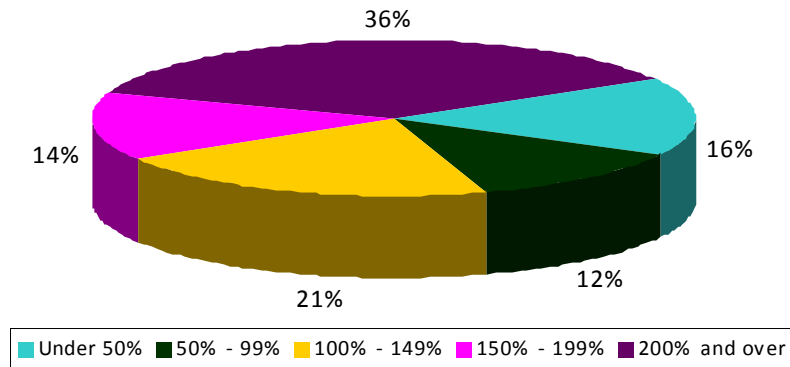
Mora

	All	Hispanic	Percent Hispanic
Total population	5,180	4,236	82%
Adult population	3,789	3,030	80%
Population under 18 years	1,391	1,206	87%
Percent under 18 years	27%	28%	N/A
Population under 5 years	323	281	87%
Population 5 to 9 years	333	311	93%
Population 10 to 14 years	402	329	82%
Population 15 to 17 years	333	285	86%

Percent of All Children Living in Families That Are Poor

	All children combined	Children below the poverty level	Percent below the poverty level
All children living with their own families	681	187	27%
living with a married couple	370	56	15%
living with a single father	111	43	39%
living with a single mother	200	88	44%

Income Level for All Children (Hispanic and Non-Hispanic) by Federal Poverty Level



	Hispanic Children	All Children
Economic Security		
Percent of children in poverty	23%	28%
Percent of children with parents out of the labor force	16%	20%
Education		
Percent of 3- to 4-year olds in preschool	N/A	42%
Percent of 18- to 24-year olds enrolled in school	N/A	40%
Percent of 18- to 24-year olds with a HS diploma or more	64%	70%
Teens		
Percent of 16- to 19-year olds not in school, military, or working	15%	14%
Percent of 16- to 19-year olds not in school or HS graduate	8%	7%
Disability		
Percent of 5- to 15-year olds with a disability	N/A	3%
Percent of disabled 5- to 15-year olds living in poverty	N/A	88%
Language		
Percent of 5- to 17-year olds speaking a language other than English	48%	43%
Percent of 5- to 17-year olds speaking English "very well"	34%	29%
Percent of linguistically isolated households*	N/A	20%
Housing		
Percent of children living in owner-occupied homes	N/A	30%
Percent of households with telephone access	91%	91%

*Census definition: family members 14 years and older who do not speak English well

Source: 2000 Census, U.S. Census Bureau (factfinder.census.gov)

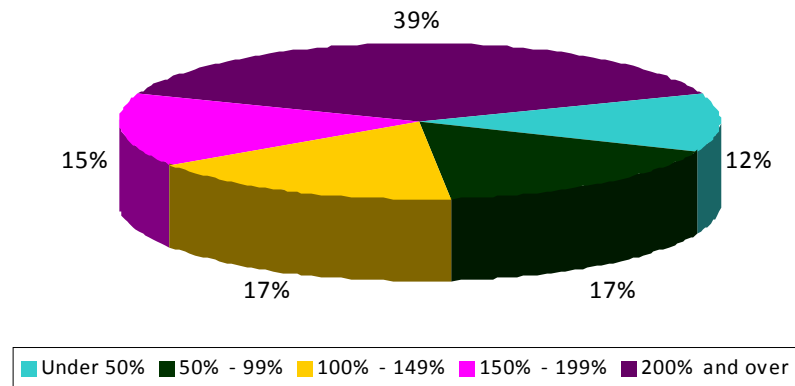
Otero

	All	Hispanic	Percent Hispanic
Total population	62,298	19,980	32%
Adult population	43,947	12,210	28%
Population under 18 years	18,351	7,770	42%
Percent under 18 years	29%	39%	N/A
Population under 5 years	4,441	1,849	42%
Population 5 to 9 years	4,991	2,216	44%
Population 10 to 14 years	5,795	2,495	43%
Population 15 to 17 years	3,124	1,210	39%

Percent of All Children Living in Families That Are Poor

	All children combined	Children below the poverty level	Percent below the poverty level
All children living with their own families	9,303	2,112	23%
living with a married couple	6,618	853	13%
living with a single father	651	183	28%
living with a single mother	2,034	1,076	53%

Income Level for All Children (Hispanic and Non-Hispanic) by Federal Poverty Level



	Hispanic Children	All Children
Economic Security		
Percent of children in poverty	41%	28%
Percent of children with parents out of the labor force	15%	12%
Education		
Percent of 3- to 4-year olds in preschool	N/A	38%
Percent of 18- to 24-year olds enrolled in school	N/A	31%
Percent of 18- to 24-year olds with a HS diploma or more	61%	81%
Teens		
Percent of 16- to 19-year olds not in school, military, or working	19%	15%
Percent of 16- to 19-year olds not in school or HS graduate	15%	12%
Disability		
Percent of 5- to 15-year olds with a disability	N/A	7%
Percent of disabled 5- to 15-year olds living in poverty	N/A	28%
Language		
Percent of 5- to 17-year olds speaking a language other than English	54%	28%
Percent of 5- to 17-year olds speaking English "very well"	34%	19%
Percent of linguistically isolated households*	N/A	7%
Housing		
Percent of children living in owner-occupied homes	N/A	32%
Percent of households with telephone access	94%	95%

*Census definition: family members 14 years and older who do not speak English well

Source: 2000 Census, U.S. Census Bureau (factfinder.census.gov)

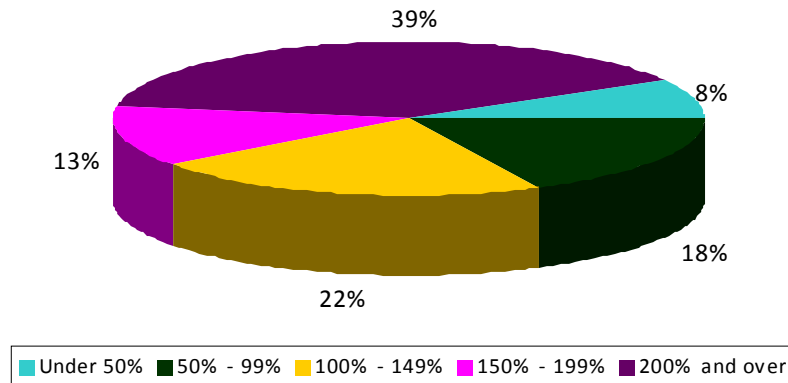
Quay

	All	Hispanic	Percent Hispanic
Total population	10,155	3,861	38%
Adult population	7,625	2,620	34%
Population under 18 years	2,530	1,241	49%
Percent under 18 years	25%	32%	N/A
Population under 5 years	563	302	54%
Population 5 to 9 years	768	367	48%
Population 10 to 14 years	687	329	48%
Population 15 to 17 years	512	243	47%

Percent of All Children Living in Families That Are Poor

	All children combined	Children below the poverty level	Percent below the poverty level
All children living with their own families	1,307	294	22%
living with a married couple	899	122	14%
living with a single father	97	32	33%
living with a single mother	311	140	45%

Income Level for All Children (Hispanic and Non-Hispanic) by Federal Poverty Level



	Hispanic Children	All Children
Economic Security		
Percent of children in poverty	32%	26%
Percent of children with parents out of the labor force	19%	14%
Education		
Percent of 3- to 4-year olds in preschool	N/A	57%
Percent of 18- to 24-year olds enrolled in school	N/A	37%
Percent of 18- to 24-year olds with a HS diploma or more	62%	74%
Teens		
Percent of 16- to 19-year olds not in school, military, or working	17%	11%
Percent of 16- to 19-year olds not in school or HS graduate	15%	10%
Disability		
Percent of 5- to 15-year olds with a disability	N/A	8%
Percent of disabled 5- to 15-year olds living in poverty	N/A	33%
Language		
Percent of 5- to 17-year olds speaking a language other than English	38%	20%
Percent of 5- to 17-year olds speaking English "very well"	27%	15%
Percent of linguistically isolated households*	N/A	4%
Housing		
Percent of children living in owner-occupied homes	N/A	26%
Percent of households with telephone access	91%	94%

*Census definition: family members 14 years and older who do not speak English well

Source: 2000 Census, U.S. Census Bureau (factfinder.census.gov)

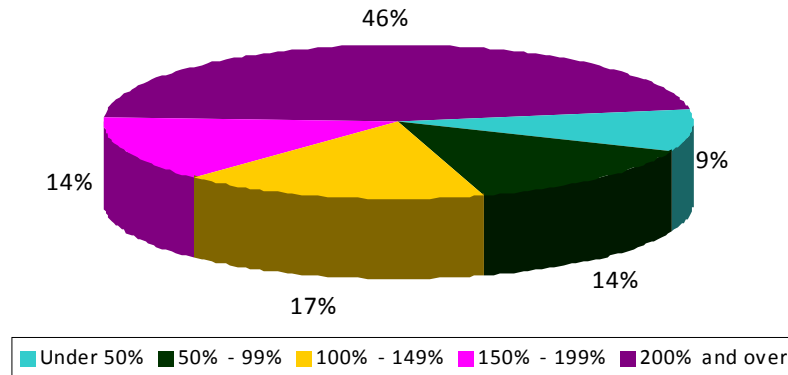
Rio Arriba

	All	Hispanic	Percent Hispanic
Total population	41,190	30,060	73%
Adult population	29,438	21,028	71%
Population under 18 years	11,752	9,032	77%
Percent under 18 years	29%	30%	N/A
Population under 5 years	2,771	2,133	77%
Population 5 to 9 years	3,288	2,549	78%
Population 10 to 14 years	3,729	2,853	77%
Population 15 to 17 years	1,964	1,497	76%

Percent of All Children Living in Families That Are Poor

	All children combined	Children below the poverty level	Percent below the poverty level
All children living with their own families	6186	1256	20%
living with a married couple	3870	428	11%
living with a single father	755	220	29%
living with a single mother	1561	608	39%

Income Level for All Children (Hispanic and Non-Hispanic) by Federal Poverty Level



	Hispanic Children	All Children
Economic Security		
Percent of children in poverty	23%	23%
Percent of children with parents out of the labor force	14%	15%
Education		
Percent of 3- to 4-year olds in preschool	N/A	37%
Percent of 18- to 24-year olds enrolled in school	N/A	38%
Percent of 18- to 24-year olds with a HS diploma or more	68%	73%
Teens		
Percent of 16- to 19-year olds not in school, military, or working	16%	16%
Percent of 16- to 19-year olds not in school or HS graduate	17%	17%
Disability		
Percent of 5- to 15-year olds with a disability	N/A	4%
Percent of disabled 5- to 15-year olds living in poverty	N/A	34%
Language		
Percent of 5- to 17-year olds speaking a language other than English	59%	50%
Percent of 5- to 17-year olds speaking English "very well"	43%	36%
Percent of linguistically isolated households*	N/A	12%
Housing		
Percent of children living in owner-occupied homes	N/A	36%
Percent of households with telephone access	89%	88%

*Census definition: family members 14 years and older who do not speak English well

Source: 2000 Census, U.S. Census Bureau (factfinder.census.gov)

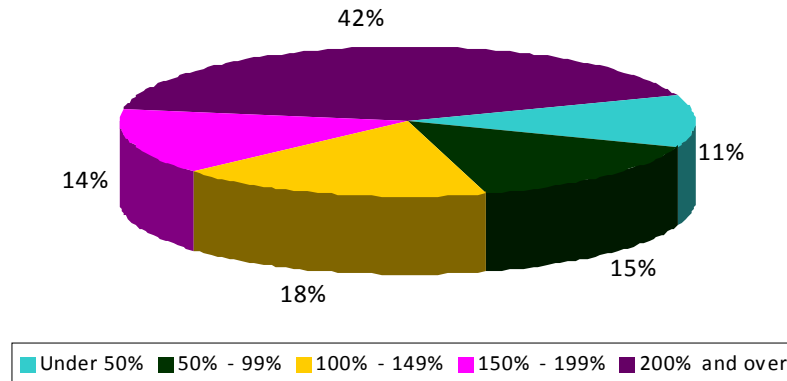
Roosevelt

	All	Hispanic	Percent Hispanic
Total population	18,018	6,057	34%
Adult population	12,995	3,836	30%
Population under 18 years	5,023	2,221	44%
Percent under 18 years	28%	37%	N/A
Population under 5 years	1,358	683	50%
Population 5 to 9 years	1,592	721	45%
Population 10 to 14 years	1,269	480	38%
Population 15 to 17 years	804	337	42%

Percent of All Children Living in Families That Are Poor

	All children combined	Children below the poverty level	Percent below the poverty level
All children living with their own families	2,547	564	22%
living with a married couple	1,837	267	15%
living with a single father	182	12	7%
living with a single mother	528	285	54%

Income Level for All Children (Hispanic and Non-Hispanic) by Federal Poverty Level



	Hispanic Children	All Children
Economic Security		
Percent of children in poverty	33%	25%
Percent of children with parents out of the labor force	14%	13%
Education		
Percent of 3- to 4-year olds in preschool	N/A	39%
Percent of 18- to 24-year olds enrolled in school	N/A	68%
Percent of 18- to 24-year olds with a HS diploma or more	51%	75%
Teens		
Percent of 16- to 19-year olds not in school, military, or working	14%	10%
Percent of 16- to 19-year olds not in school or HS graduate	15%	8%
Disability		
Percent of 5- to 15-year olds with a disability	N/A	3%
Percent of disabled 5- to 15-year olds living in poverty	N/A	35%
Language		
Percent of 5- to 17-year olds speaking a language other than English	59%	25%
Percent of 5- to 17-year olds speaking English "very well"	42%	18%
Percent of linguistically isolated households*	N/A	5%
Housing		
Percent of children living in owner-occupied homes	N/A	32%
Percent of households with telephone access	94%	97%

*Census definition: family members 14 years and older who do not speak English well

Source: 2000 Census, U.S. Census Bureau (factfinder.census.gov)

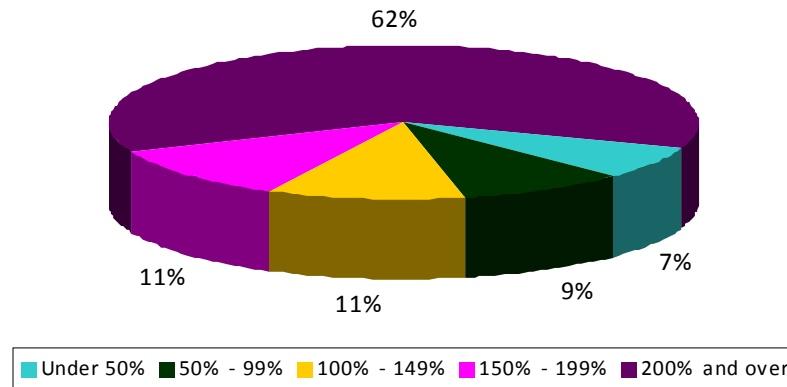
Sandoval

	All	Hispanic	Percent Hispanic
Total population	89,908	26,426	29%
Adult population	63,303	17,061	27%
Population under 18 years	26,605	9,365	35%
Percent under 18 years	30%	35%	N/A
Population under 5 years	6,526	2,559	39%
Population 5 to 9 years	7,780	2,782	36%
Population 10 to 14 years	8,001	2,609	33%
Population 15 to 17 years	4,298	1,415	33%

Percent of All Children Living in Families That Are Poor

	All children combined	Children below the poverty level	Percent below the poverty level
All children living with their own families	13,516	1,676	12%
living with a married couple	9,720	665	7%
living with a single father	1,109	192	17%
living with a single mother	2,687	819	30%

Income Level for All Children (Hispanic and Non-Hispanic) by Federal Poverty Level



	Hispanic Children	All Children
Economic Security		
Percent of children in poverty	12%	16%
Percent of children with parents out of the labor force	8%	13%
Education		
Percent of 3- to 4-year olds in preschool	N/A	44%
Percent of 18- to 24-year olds enrolled in school	N/A	36%
Percent of 18- to 24-year olds with a HS diploma or more	80%	86%
Teens		
Percent of 16- to 19-year olds not in school, military, or working	10%	13%
Percent of 16- to 19-year olds not in school or HS graduate	12%	12%
Disability		
Percent of 5- to 15-year olds with a disability	N/A	5%
Percent of disabled 5- to 15-year olds living in poverty	N/A	19%
Language		
Percent of 5- to 17-year olds speaking a language other than English	27%	27%
Percent of 5- to 17-year olds speaking English "very well"	22%	18%
Percent of linguistically isolated households*	N/A	3%
Housing		
Percent of children living in owner-occupied homes	N/A	38%
Percent of households with telephone access	95%	94%

*Census definition: family members 14 years and older who do not speak English well

Source: 2000 Census, U.S. Census Bureau (factfinder.census.gov)

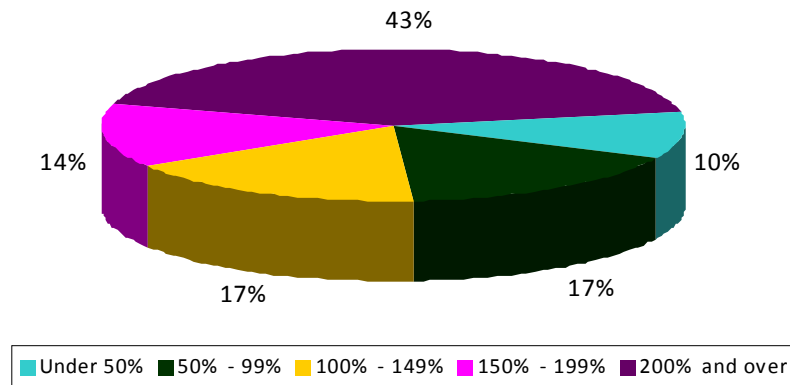
San Juan

	All	Hispanic	Percent Hispanic
Total population	113,801	16,984	15%
Adult population	76,717	10,469	14%
Population under 18 years	37,084	6,515	18%
Percent under 18 years	33%	38%	N/A
Population under 5 years	9,018	1,726	19%
Population 5 to 9 years	10,049	1,812	18%
Population 10 to 14 years	11,016	1,816	16%
Population 15 to 17 years	7,001	1,161	17%

Percent of All Children Living in Families That Are Poor

	All children combined	Children below the poverty level	Percent below the poverty level
All children living with their own families	17,839	4,121	23%
living with a married couple	12,139	1,599	13%
living with a single father	1,644	585	36%
living with a single mother	4,056	1,937	48%

Income Level for All Children (Hispanic and Non-Hispanic) by Federal Poverty Level



	Hispanic Children	All Children
Economic Security		
Percent of children in poverty	24%	27%
Percent of children with parents out of the labor force	13%	12%
Education		
Percent of 3- to 4-year olds in preschool	N/A	37%
Percent of 18- to 24-year olds enrolled in school	N/A	37%
Percent of 18- to 24-year olds with a HS diploma or more	65%	77%
Teens		
Percent of 16- to 19-year olds not in school, military, or working	16%	12%
Percent of 16- to 19-year olds not in school or HS graduate	16%	13%
Disability		
Percent of 5- to 15-year olds with a disability	N/A	7%
Percent of disabled 5- to 15-year olds living in poverty	N/A	28%
Language		
Percent of 5- to 17-year olds speaking a language other than English	31%	23%
Percent of 5- to 17-year olds speaking English "very well"	19%	16%
Percent of linguistically isolated households*	N/A	5%
Housing		
Percent of children living in owner-occupied homes	N/A	41%
Percent of households with telephone access	94%	87%

*Census definition: family members 14 years and older who do not speak English well

Source: 2000 Census, U.S. Census Bureau (factfinder.census.gov)

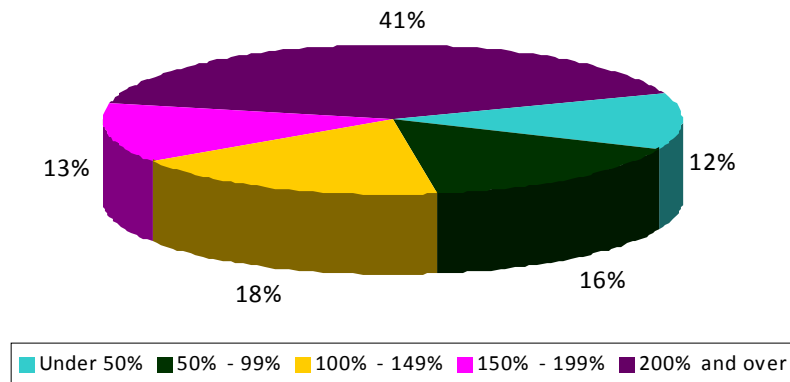
San Miguel

	All	Hispanic	Percent Hispanic
Total population	30,125	23,469	78%
Adult population	21,822	16,414	75%
Population under 18 years	8,304	7,055	85%
Percent under 18 years	28%	30%	N/A
Population under 5 years	1,940	1,657	85%
Population 5 to 9 years	2,256	1,882	83%
Population 10 to 14 years	2,580	2,232	87%
Population 15 to 17 years	1,528	1,284	84%

Percent of All Children Living in Families That Are Poor

	All children combined	Children below the poverty level	Percent below the poverty level
All children living with their own families	4,390	1,114	25%
living with a married couple	2,573	330	13%
living with a single father	506	215	42%
living with a single mother	1,311	569	43%

Income Level for All Children (Hispanic and Non-Hispanic) by Federal Poverty Level



	Hispanic Children	All Children
Economic Security		
Percent of children in poverty	28%	28%
Percent of children with parents out of the labor force	17%	17%
Education		
Percent of 3- to 4-year olds in preschool	N/A	38%
Percent of 18- to 24-year olds enrolled in school	N/A	54%
Percent of 18- to 24-year olds with a HS diploma or more	70%	74%
Teens		
Percent of 16- to 19-year olds not in school, military, or working	6%	6%
Percent of 16- to 19-year olds not in school or HS graduate	10%	8%
Disability		
Percent of 5- to 15-year olds with a disability	N/A	6%
Percent of disabled 5- to 15-year olds living in poverty	N/A	42%
Language		
Percent of 5- to 17-year olds speaking a language other than English	46%	42%
Percent of 5- to 17-year olds speaking English "very well"	32%	29%
Percent of linguistically isolated households*	N/A	9%
Housing		
Percent of children living in owner-occupied homes	N/A	35%
Percent of households with telephone access	91%	92%

*Census definition: family members 14 years and older who do not speak English well

Source: 2000 Census, U.S. Census Bureau (factfinder.census.gov)

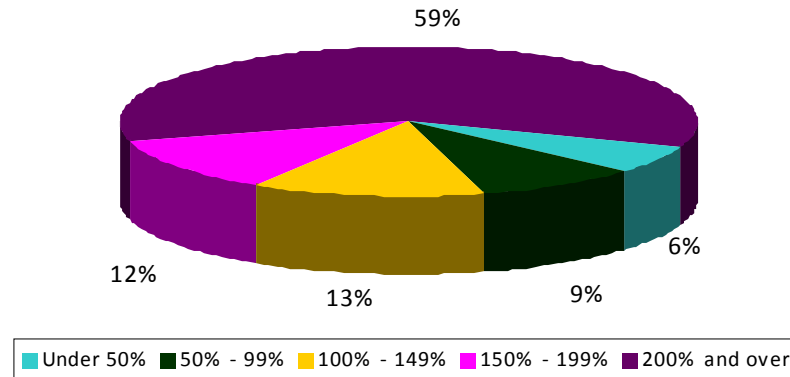
Santa Fe

	All	Hispanic	Percent Hispanic
Total population	129,292	63,461	49%
Adult population	98,305	44,299	45%
Population under 18 years	30,987	19,162	62%
Percent under 18 years	24%	30%	N/A
Population under 5 years	7,735	5,101	66%
Population 5 to 9 years	8,703	5,494	63%
Population 10 to 14 years	9,220	5,411	59%
Population 15 to 17 years	5,329	3,156	59%

Percent of All Children Living in Families That Are Poor

	All children combined	Children below the poverty level	Percent below the poverty level
All children living with their own families	17,498	2,339	13%
living with a married couple	11,544	786	7%
living with a single father	1,799	356	20%
living with a single mother	4,155	1,197	29%

Income Level for All Children (Hispanic and Non-Hispanic) by Federal Poverty Level



	Hispanic Children	All Children
Economic Security		
Percent of children in poverty	20%	16%
Percent of children with parents out of the labor force	15%	12%
Education		
Percent of 3- to 4-year olds in preschool	N/A	41%
Percent of 18- to 24-year olds enrolled in school	N/A	38%
Percent of 18- to 24-year olds with a HS diploma or more	70%	84%
Teens		
Percent of 16- to 19-year olds not in school, military, or working	14%	12%
Percent of 16- to 19-year olds not in school or HS graduate	20%	15%
Disability		
Percent of 5- to 15-year olds with a disability	N/A	4%
Percent of disabled 5- to 15-year olds living in poverty	N/A	23%
Language		
Percent of 5- to 17-year olds speaking a language other than English	40%	29%
Percent of 5- to 17-year olds speaking English "very well"	25%	19%
Percent of linguistically isolated households*	N/A	6%
Housing		
Percent of children living in owner-occupied homes	N/A	32%
Percent of households with telephone access	96%	97%

*Census definition: family members 14 years and older who do not speak English well

Source: 2000 Census, U.S. Census Bureau (factfinder.census.gov)

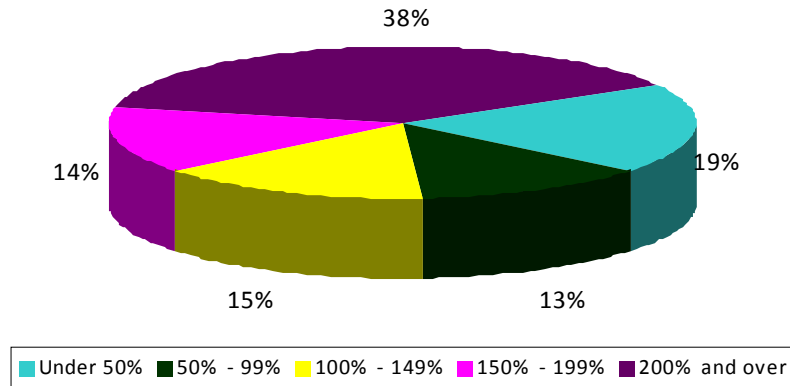
Sierra

	All	Hispanic	Percent Hispanic
Total population	13,270	3,477	26%
Adult population	10,619	2,275	21%
Population under 18 years	2,651	1,202	45%
Percent under 18 years	20%	35%	N/A
Population under 5 years	602	258	43%
Population 5 to 9 years	708	391	55%
Population 10 to 14 years	851	342	40%
Population 15 to 17 years	490	211	43%

Percent of All Children Living in Families That Are Poor

	All children combined	Children below the poverty level	Percent below the poverty level
All children living with their own families	1373	343	25%
living with a married couple	934	155	17%
living with a single father	127	16	13%
living with a single mother	312	172	55%

Income Level for All Children (Hispanic and Non-Hispanic) by Federal Poverty Level



	Hispanic Children	All Children
Economic Security		
Percent of children in poverty	39%	32%
Percent of children with parents out of the labor force	10%	10%
Education		
Percent of 3- to 4-year olds in preschool	N/A	33%
Percent of 18- to 24-year olds enrolled in school	N/A	31%
Percent of 18- to 24-year olds with a HS diploma or more	59%	76%
Teens		
Percent of 16- to 19-year olds not in school, military, or working	16%	9%
Percent of 16- to 19-year olds not in school or HS graduate	20%	14%
Disability		
Percent of 5- to 15-year olds with a disability	N/A	9%
Percent of disabled 5- to 15-year olds living in poverty	N/A	42%
Language		
Percent of 5- to 17-year olds speaking a language other than English	53%	27%
Percent of 5- to 17-year olds speaking English "very well"	36%	19%
Percent of linguistically isolated households*	N/A	3%
Housing		
Percent of children living in owner-occupied homes	N/A	19%
Percent of households with telephone access	90%	91%

*Census definition: family members 14 years and older who do not speak English well

Source: 2000 Census, U.S. Census Bureau (factfinder.census.gov)

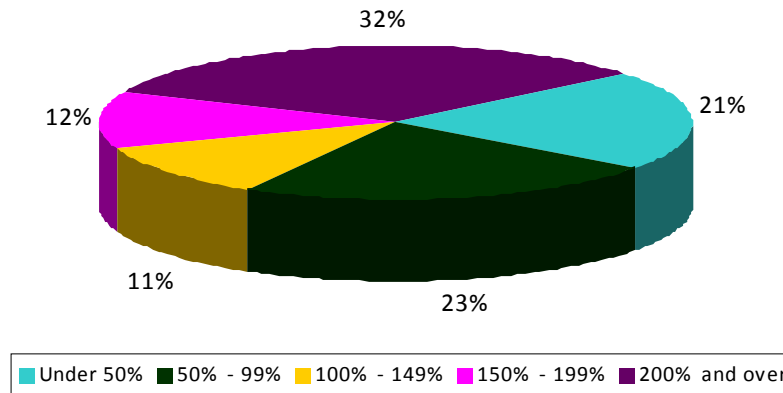
Socorro

	All	Hispanic	Percent Hispanic
Total population	18,078	8,782	49%
Adult population	12,982	5,843	45%
Population under 18 years	5,096	2,939	58%
Percent under 18 years	28%	33%	N/A
Population under 5 years	1,224	742	61%
Population 5 to 9 years	1,345	741	55%
Population 10 to 14 years	1,650	965	58%
Population 15 to 17 years	877	491	56%

Percent of All Children Living in Families That Are Poor

	All children combined	Children below the poverty level	Percent below the poverty level
All children living with their own families	2,601	919	35%
living with a married couple	1,551	306	20%
living with a single father	264	112	42%
living with a single mother	786	501	64%

Income Level for All Children (Hispanic and Non-Hispanic) by Federal Poverty Level



	Hispanic Children	All Children
Economic Security		
Percent of children in poverty	44%	44%
Percent of children with parents out of the labor force	14%	18%
Education		
Percent of 3- to 4-year olds in preschool	N/A	36%
Percent of 18- to 24-year olds enrolled in school	N/A	51%
Percent of 18- to 24-year olds with a HS diploma or more	61%	72%
Teens		
Percent of 16- to 19-year olds not in school, military, or working	17%	13%
Percent of 16- to 19-year olds not in school or HS graduate	12%	10%
Disability		
Percent of 5- to 15-year olds with a disability	N/A	7%
Percent of disabled 5- to 15-year olds living in poverty	N/A	48%
Language		
Percent of 5- to 17-year olds speaking a language other than English	34%	31%
Percent of 5- to 17-year olds speaking English "very well"	27%	18%
Percent of linguistically isolated households*	N/A	8%
Housing		
Percent of children living in owner-occupied homes	N/A	33%
Percent of households with telephone access	90%	90%

*Census definition: family members 14 years and older who do not speak English well

Source: 2000 Census, U.S. Census Bureau (factfinder.census.gov)

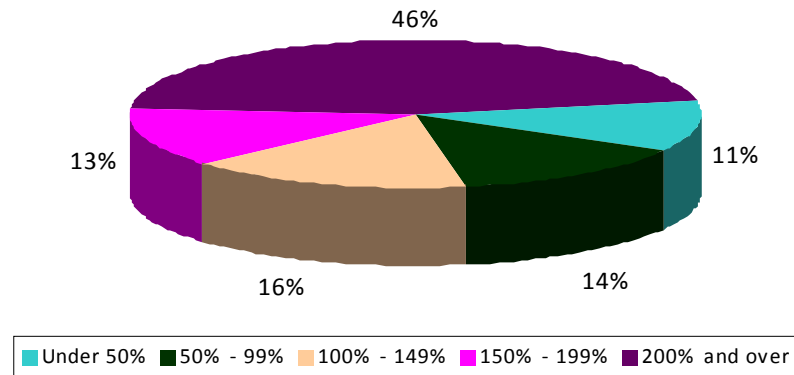
Taos

	All	Hispanic	Percent Hispanic
Total population	29,979	17,388	58%
Adult population	22,635	12,350	55%
Population under 18 years	7,344	5,038	69%
Percent under 18 years	24%	29%	N/A
Population under 5 years	1,632	1,110	68%
Population 5 to 9 years	1,832	1,259	69%
Population 10 to 14 years	2,501	1,738	69%
Population 15 to 17 years	1,379	931	68%

Percent of All Children Living in Families That Are Poor

	All children combined	Children below the poverty level	Percent below the poverty level
All children living with their own families	4,258	903	21%
living with a married couple	2,654	323	12%
living with a single father	520	135	26%
living with a single mother	1,084	445	41%

Income Level for All Children (Hispanic and Non-Hispanic) by Federal Poverty Level



	Hispanic Children	All Children
Economic Security		
Percent of children in poverty	25%	25%
Percent of children with parents out of the labor force	13%	13%
Education		
Percent of 3- to 4-year olds in preschool	N/A	44%
Percent of 18- to 24-year olds enrolled in school	N/A	29%
Percent of 18- to 24-year olds with a HS diploma or more	68%	79%
Teens		
Percent of 16- to 19-year olds not in school, military, or working	14%	15%
Percent of 16- to 19-year olds not in school or HS graduate	18%	14%
Disability		
Percent of 5- to 15-year olds with a disability	N/A	5%
Percent of disabled 5- to 15-year olds living in poverty	N/A	30%
Language		
Percent of 5- to 17-year olds speaking a language other than English	46%	38%
Percent of 5- to 17-year olds speaking English "very well"	34%	28%
Percent of linguistically isolated households*	N/A	9%
Housing		
Percent of children living in owner-occupied homes	N/A	30%
Percent of households with telephone access	93%	92%

*Census definition: family members 14 years and older who do not speak English well

Source: 2000 Census, U.S. Census Bureau (factfinder.census.gov)

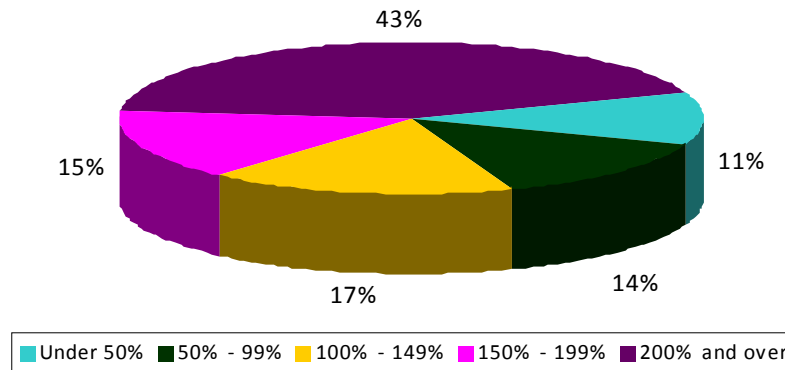
Torrance

	All	Hispanic	Percent Hispanic
Total population	16,911	6,282	37%
Adult population	11,790	4,057	34%
Population under 18 years	5,121	2,225	43%
Percent under 18 years	30%	35%	N/A
Population under 5 years	1,186	533	45%
Population 5 to 9 years	1,471	516	35%
Population 10 to 14 years	1,553	786	51%
Population 15 to 17 years	911	390	43%

Percent of All Children Living in Families That Are Poor

	All children combined	Children below the poverty level	Percent below the poverty level
All children living with their own families	2,481	537	22%
living with a married couple	1,778	214	12%
living with a single father	192	51	27%
living with a single mother	511	272	53%

Income Level for All Children (Hispanic and Non-Hispanic) by Federal Poverty Level



	Hispanic Children	All Children
Economic Security		
Percent of children in poverty	31%	25%
Percent of children with parents out of the labor force	13%	8%
Education		
Percent of 3- to 4-year olds in preschool	N/A	19%
Percent of 18- to 24-year olds enrolled in school	N/A	26%
Percent of 18- to 24-year olds with a HS diploma or more	62%	77%
Teens		
Percent of 16- to 19-year olds not in school, military, or working	17%	17%
Percent of 16- to 19-year olds not in school or HS graduate	14%	14%
Disability		
Percent of 5- to 15-year olds with a disability	N/A	7%
Percent of disabled 5- to 15-year olds living in poverty	N/A	28%
Language		
Percent of 5- to 17-year olds speaking a language other than English	38%	18%
Percent of 5- to 17-year olds speaking English "very well"	31%	14%
Percent of linguistically isolated households*	N/A	3%
Housing		
Percent of children living in owner-occupied homes	N/A	36%
Percent of households with telephone access	91%	94%

*Census definition: family members 14 years and older who do not speak English well

Source: 2000 Census, U.S. Census Bureau (factfinder.census.gov)

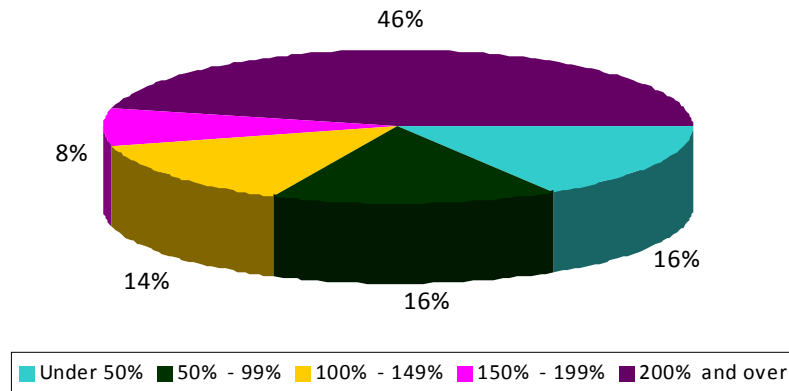
Union

	All	Hispanic	Percent Hispanic
Total population	4,174	1,453	35%
Adult population	3,030	964	32%
Population under 18 years	1,144	489	43%
Percent under 18 years	27%	34%	N/A
Population under 5 years	229	97	42%
Population 5 to 9 years	305	131	43%
Population 10 to 14 years	366	163	45%
Population 15 to 17 years	244	98	40%

Percent of All Children Living in Families That Are Poor

	All children combined	Children below the poverty level	Percent below the poverty level
All children living with their own families	573	138	24%
living with a married couple	410	53	13%
living with a single father	43	4	9%
living with a single mother	120	81	68%

Income Level for All Children (Hispanic and Non-Hispanic) by Federal Poverty Level



	Hispanic Children	All Children
Economic Security		
Percent of children in poverty	39%	32%
Percent of children with parents out of the labor force	10%	8%
Education		
Percent of 3- to 4-year olds in preschool	N/A	39%
Percent of 18- to 24-year olds enrolled in school	N/A	34%
Percent of 18- to 24-year olds with a HS diploma or more	64%	80%
Teens		
Percent of 16- to 19-year olds not in school, military, or working	3%	1%
Percent of 16- to 19-year olds not in school or HS graduate	0%	4%
Disability		
Percent of 5- to 15-year olds with a disability	N/A	1%
Percent of disabled 5- to 15-year olds living in poverty	N/A	44%
Language		
Percent of 5- to 17-year olds speaking a language other than English	33%	18%
Percent of 5- to 17-year olds speaking English "very well"	25%	14%
Percent of linguistically isolated households*	N/A	7%
Housing		
Percent of children living in owner-occupied homes	N/A	27%
Percent of households with telephone access	91%	96%

*Census definition: family members 14 years and older who do not speak English well

Source: 2000 Census, U.S. Census Bureau (factfinder.census.gov)

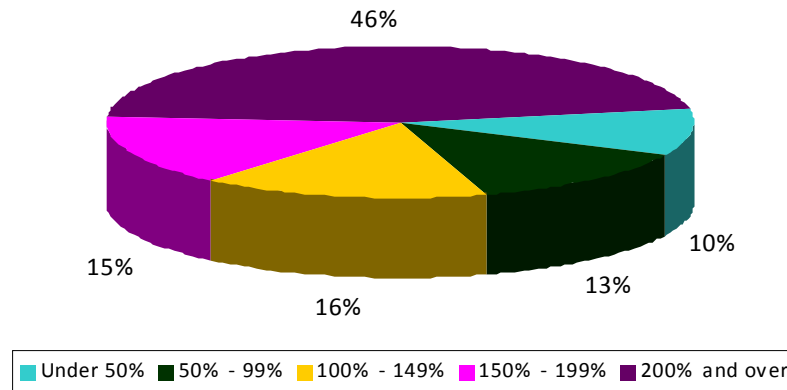
Valencia

	All	Hispanic	Percent Hispanic
Total population	66,152	36,363	55%
Adult population	46,347	23,429	51%
Population under 18 years	19,805	12,934	65%
Percent under 18 years	30%	36%	N/A
Population under 5 years	5,010	3,498	70%
Population 5 to 9 years	5,599	3,592	64%
Population 10 to 14 years	6,021	3,729	62%
Population 15 to 17 years	3,175	2,115	67%

Percent of All Children Living in Families That Are Poor

	All children combined	Children below the poverty level	Percent below the poverty level
All children living with their own families	9,861	1,840	19%
living with a married couple	6,800	810	12%
living with a single father	940	205	22%
living with a single mother	2,121	825	39%


Income Level for All Children (Hispanic and Non-Hispanic) by Federal Poverty Level



	Hispanic Children	All Children
Economic Security		
Percent of children in poverty	28%	23%
Percent of children with parents out of the labor force	12%	11%
Education		
Percent of 3- to 4-year olds in preschool	N/A	31%
Percent of 18- to 24-year olds enrolled in school	N/A	32%
Percent of 18- to 24-year olds with a HS diploma or more	66%	76%
Teens		
Percent of 16- to 19-year olds not in school, military, or working	15%	12%
Percent of 16- to 19-year olds not in school or HS graduate	19%	17%
Disability		
Percent of 5- to 15-year olds with a disability	N/A	5%
Percent of disabled 5- to 15-year olds living in poverty	N/A	32%
Language		
Percent of 5- to 17-year olds speaking a language other than English	34%	23%
Percent of 5- to 17-year olds speaking English "very well"	24%	16%
Percent of linguistically isolated households*	N/A	5%
Housing		
Percent of children living in owner-occupied homes	N/A	39%
Percent of households with telephone access	93%	95%

*Census definition: family members 14 years and older who do not speak English well

Source: 2000 Census, U.S. Census Bureau (factfinder.census.gov)



New Mexico Voices for Children
2340 Alamo S.E., Suite 120
Albuquerque, New Mexico 87106
Phone 505.244.9505
Fax 505.244.9509
www.nmvoices.org